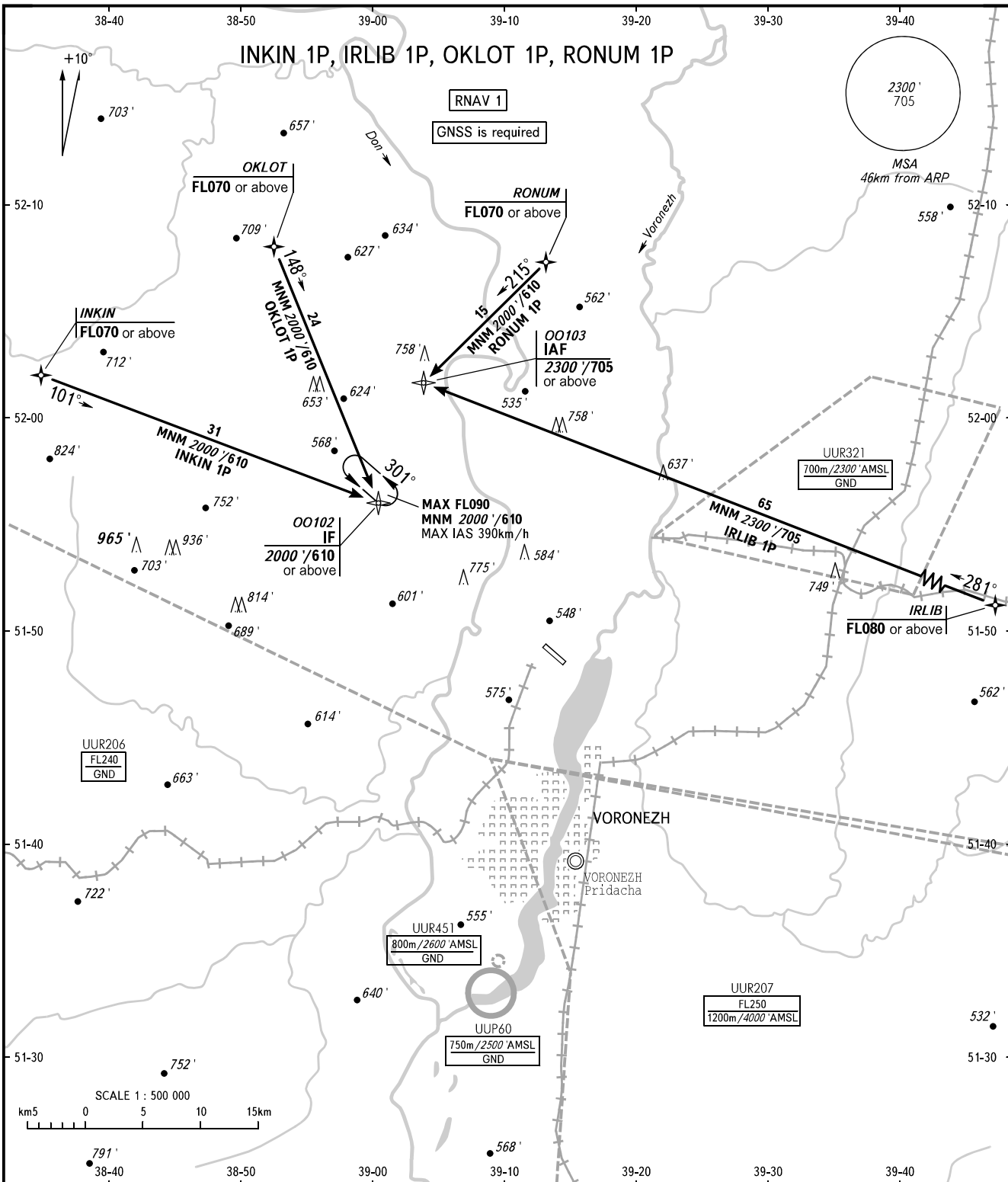


STANDARD ARRIVAL CHART  
INSTRUMENT (STAR) - ICAO

VORONEZH, RUSSIA  
CHERTOVITSKOYE  
RNAV RWY 12

TRANSITION  
LEVEL: **1**



TOWER 118.300

- 1** TRANSITION LEVEL:
- FL060 when QNH is 1013 hPa (760mm mercury column) or above;
  - FL070 when QNH is 977 hPa (733mm mercury column) or above, but less than 1013 hPa (760mm mercury column);
  - FL080 when QNH is less than 977 hPa (733mm mercury column).

BEARINGS AND TRACKS ARE MAGNETIC  
ALTITUDES AND ELEVATIONS IN FEET AND METRES  
DISTANCES IN KILOMETRES

Alt set: -QNH(QFE on req);  
-hPa(mm on req).