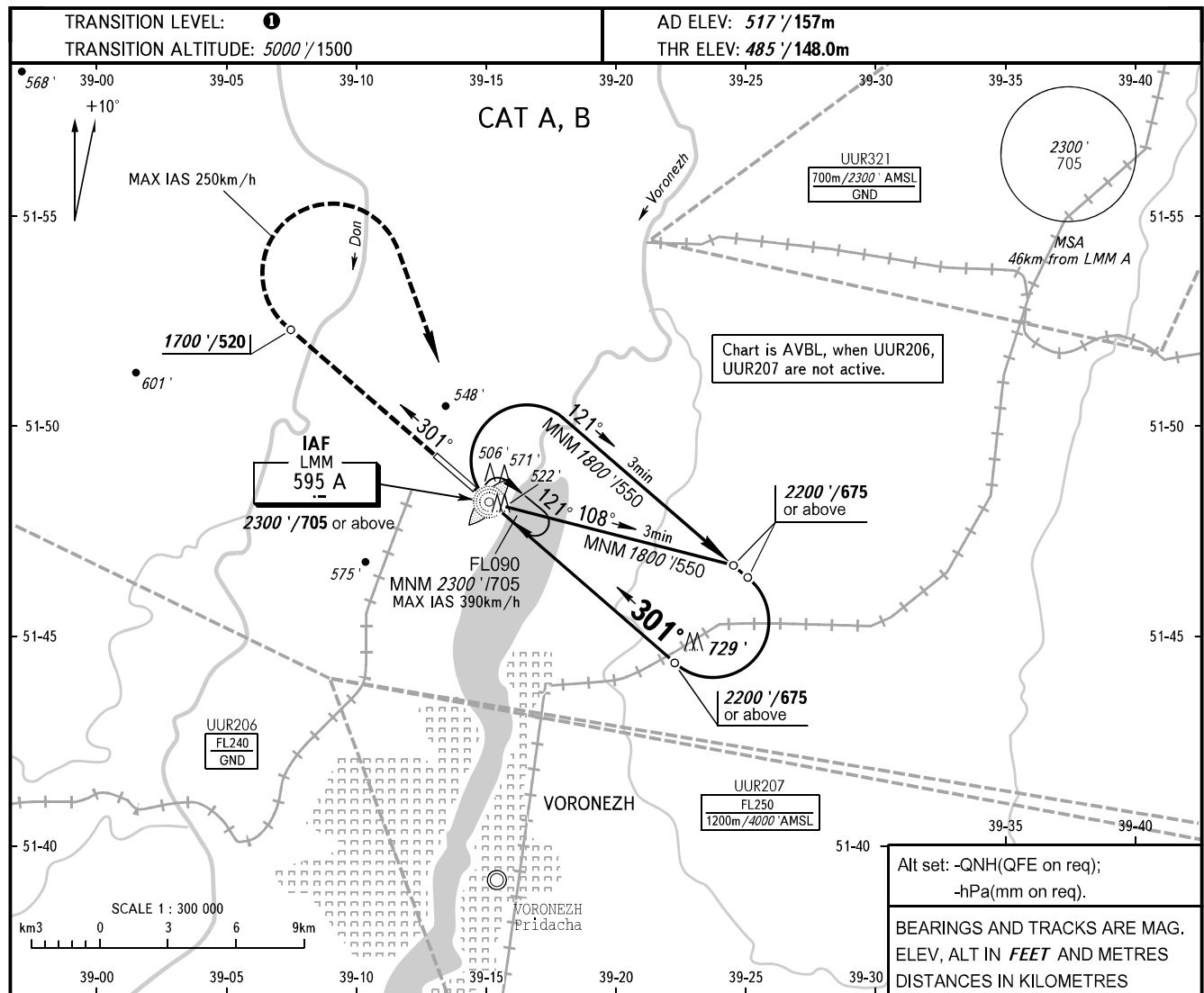


**INSTRUMENT  
APPROACH  
CHART - ICAO**

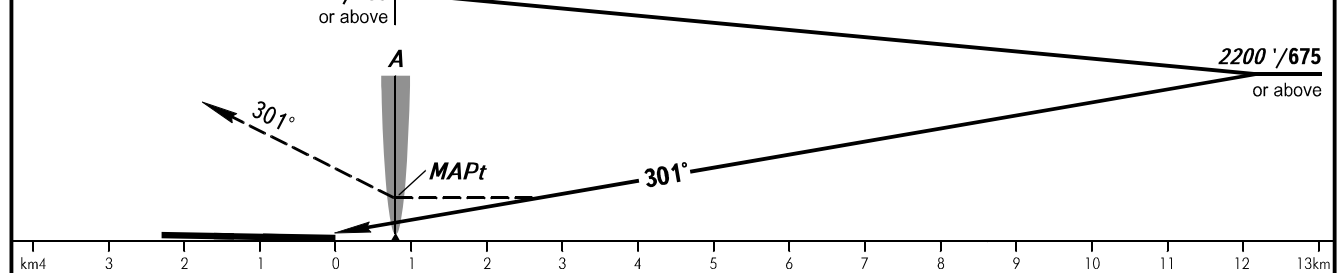
TOWER 118.300

**VORONEZH, RUSSIA**  
CHERTOVITSKOYE  
NDB U RWY 30



Alt set: -QNH(QFE on req);  
-hPa(mm on req).  
BEARINGS AND TRACKS ARE MAG.  
ELEV, ALT IN FEET AND METRES  
DISTANCES IN KILOMETRES

**MISSED APPROACH**  
Climb on track 301° to 1700' /520,  
then turn RIGHT to LMM A  
climbing to 2300' /705 or above,  
then according to chart.



OCA(H)		A	B	C	D
Straight-in	Approach	1030 '(536 ')/(165)	1030 '(536 ')/(165)		
Circling		1030 '(536 ')/(165)	1030 '(536 ')/(165)		

**1** TRANSITION LEVEL:  
- FL060 when QNH is 1013 hPa (760mm mercury column) or above;  
- FL070 when QNH is 977 hPa (733mm mercury column) or above, but less than 1013 hPa (760mm mercury column);  
- FL080 when QNH is less than 977 hPa (733mm mercury column).

CHANGE: Heading, ALT