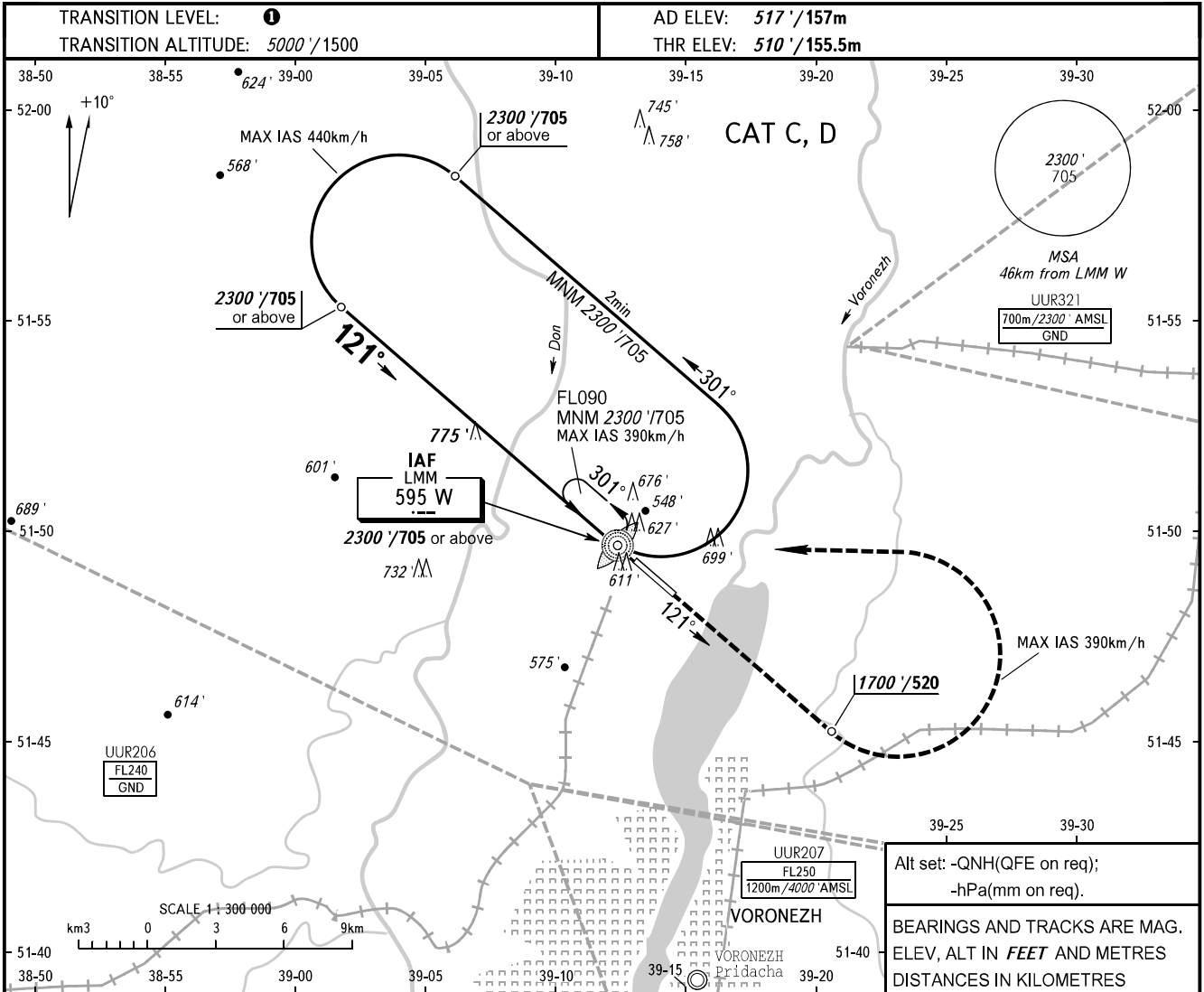


**INSTRUMENT
APPROACH
CHART - ICAO**

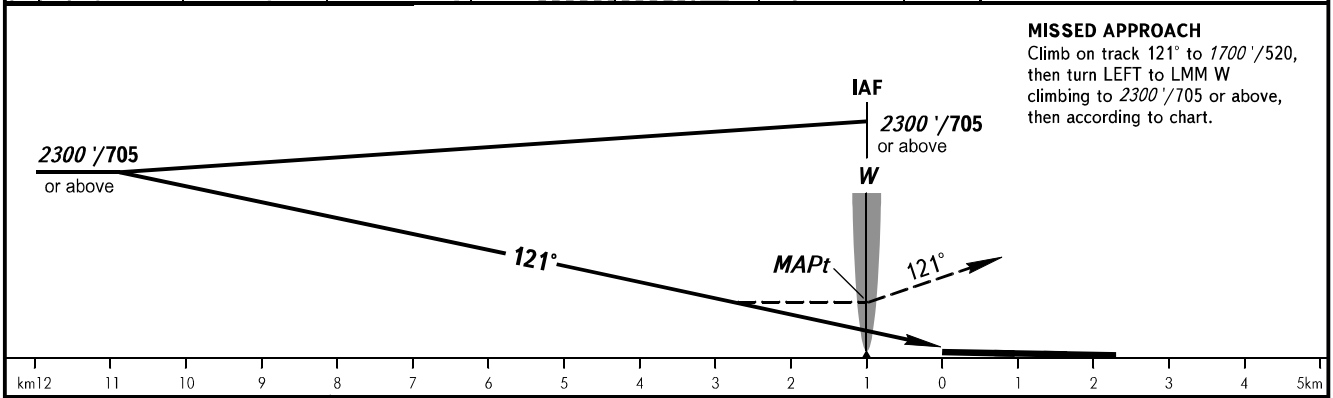
TOWER **118.300**

VORONEZH, RUSSIA
CHERTOVITSKOYE
NDB V RWY 12



Alt set: -QNH(QFE on req);
-hPa(mm on req).

BEARINGS AND TRACKS ARE MAG.
ELEV, ALT IN FEET AND METRES
DISTANCES IN KILOMETRES



MISSED APPROACH
Climb on track 121° to 1700' / 520,
then turn LEFT to LMM W
climbing to 2300' / 705 or above,
then according to chart.

OCA(H)		A	B	C	D
Straight-in	Approach			1070' (552') / (170)	1070' (552') / (170)
Circling				1130' (606') / (185)	1210' (689') / (215)

TRANSITION LEVEL:
- FL060 when QNH is 1013 hPa (760mm mercury column) or above;
- FL070 when QNH is 977 hPa (733mm mercury column) or above, but less than 1013 hPa (760mm mercury column);
- FL080 when QNH is less than 977 hPa (733mm mercury column).

CHANGE: New chart