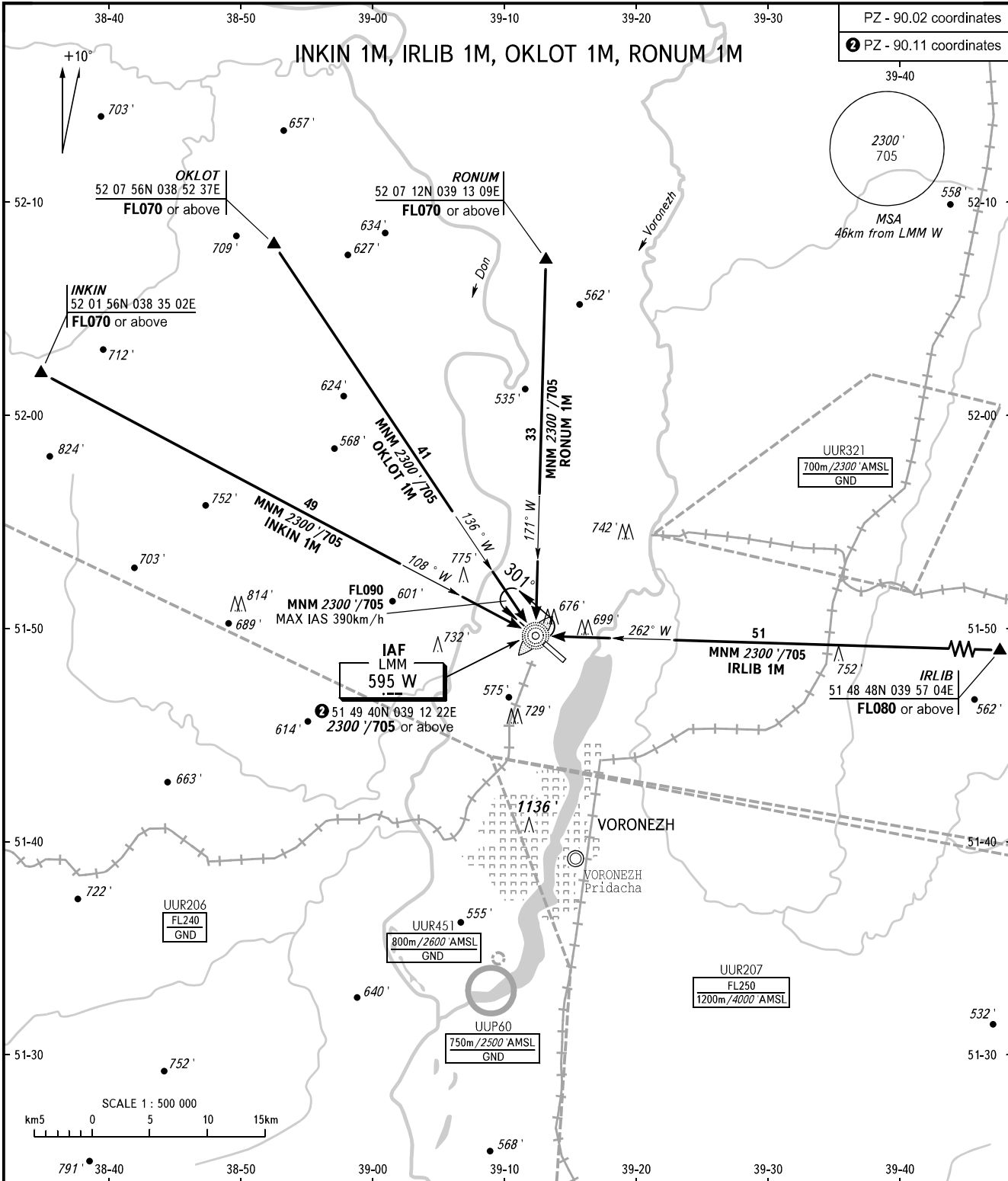


STANDARD ARRIVAL CHART  
INSTRUMENT (STAR) - ICAO

VORONEZH, RUSSIA  
CHERTOVITSKOYE  
RWY 12

TRANSITION  
LEVEL: **1**



**1** TRANSITION LEVEL:  
 - FL060 when QNH is 1013 hPa (760mm mercury column) or above;  
 - FL070 when QNH is 977 hPa (733mm mercury column) or above, but less than 1013 hPa (760mm mercury column);  
 - FL080 when QNH is less than 977 hPa (733mm mercury column).

**WARNING**  
 Holding area is AVBL, when UUR206, UUR207 are not active.

BEARINGS AND TRACKS ARE MAGNETIC  
 ALTITUDES AND ELEVATIONS IN FEET AND METRES  
 DISTANCES IN KILOMETRES

Alt set: -QNH(QFE on req);  
 -hPa(mm on req).

CHANGE: Heading, ALT, MSA