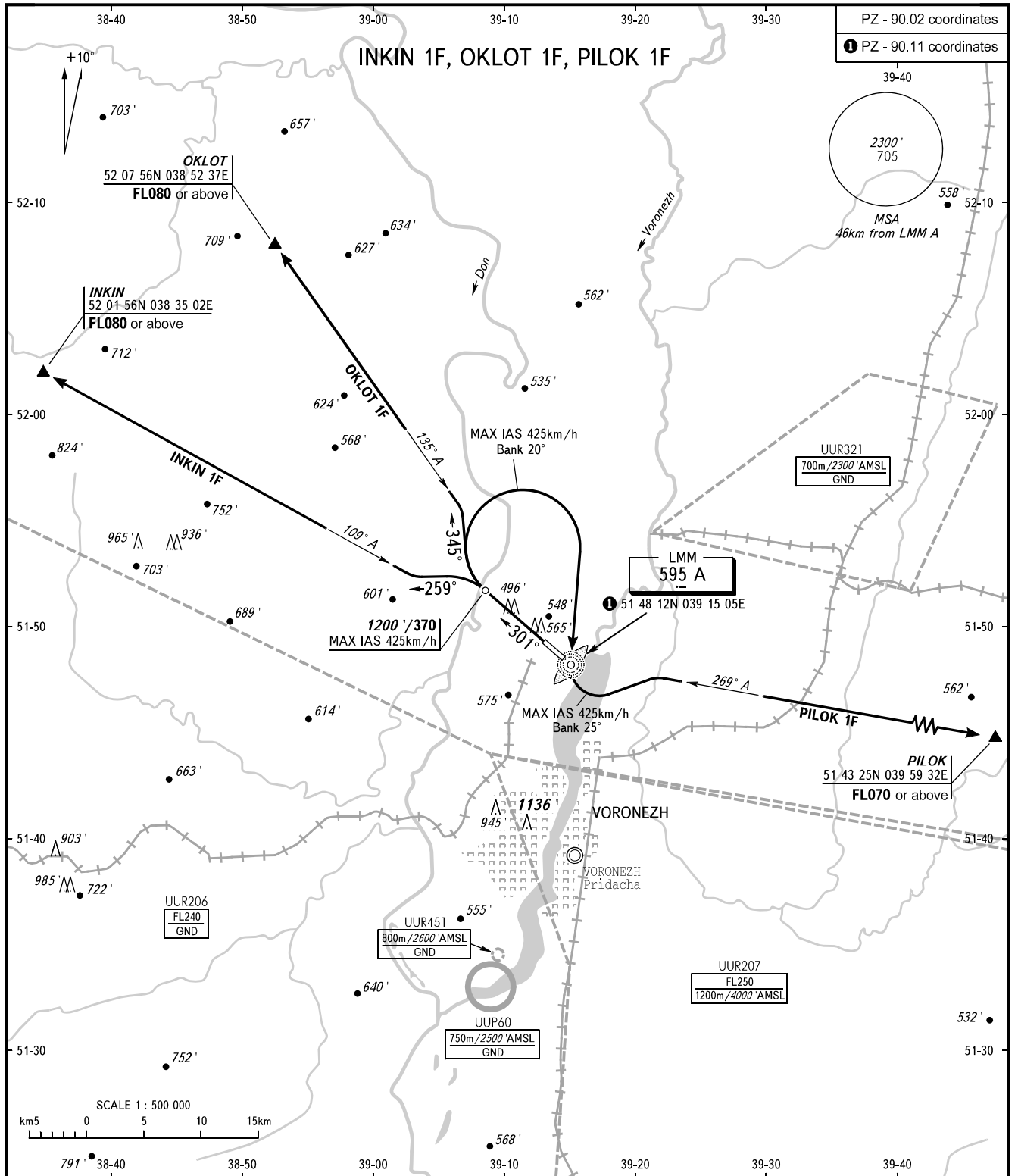


STANDARD DEPARTURE CHART
INSTRUMENT (SID) - ICAO

TRANSITION
ALTITUDE: 5000 / 1500

VORONEZH, RUSSIA
CHERTOVITSKOYE
RWY 30



TOWER 118.300

WARNING

- MNM climb gradients due to the airspace structure:
- 4.7% up to FL080 for INKIN 1F;
- 5.5% up to FL080 for OKLOT 1F.

BEARINGS AND TRACKS ARE MAGNETIC
ALTITUDES AND ELEVATIONS IN FEET AND METRES
DISTANCES IN KILOMETRES

Alt set: -QNH(QFE on req);
-hPa(mm on req).