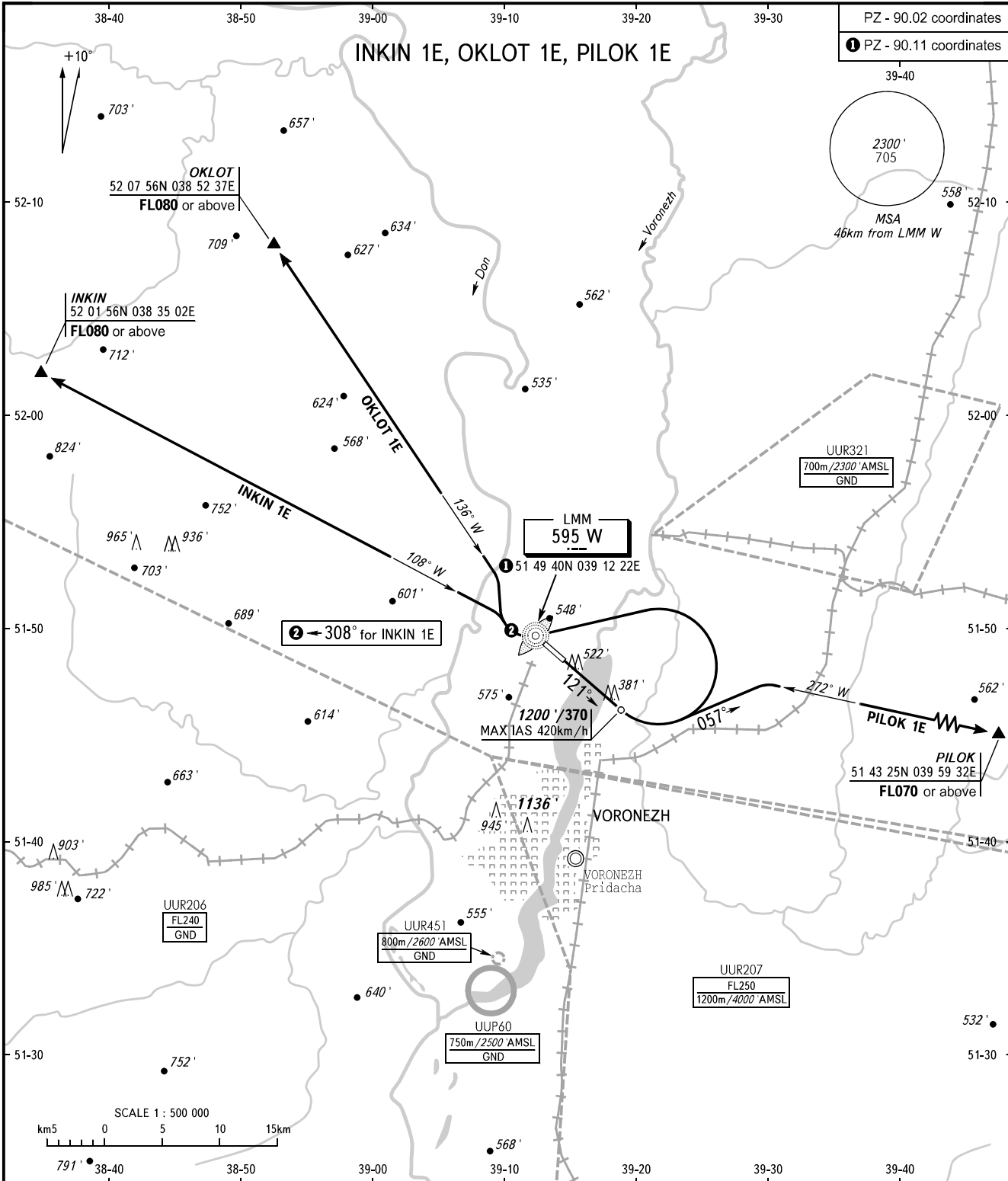


STANDARD DEPARTURE CHART
INSTRUMENT (SID) - ICAO

TRANSITION
ALTITUDE: 5000 / 1500

VORONEZH, RUSSIA
CHERTOVITSKOYE
RWY 12



PZ - 90.02 coordinates
① PZ - 90.11 coordinates

TOWER 118.300

WARNING
MNM climb gradient due to the airspace structure:
- 3.7% up to FL070 for PILOK 1E.

BEARINGS AND TRACKS ARE MAGNETIC
ALTITUDES AND ELEVATIONS IN FEET AND METRES
DISTANCES IN KILOMETRES

Alt set: -QNH(QFE on req);
-hPa(mm on req).

CHANGE: New chart