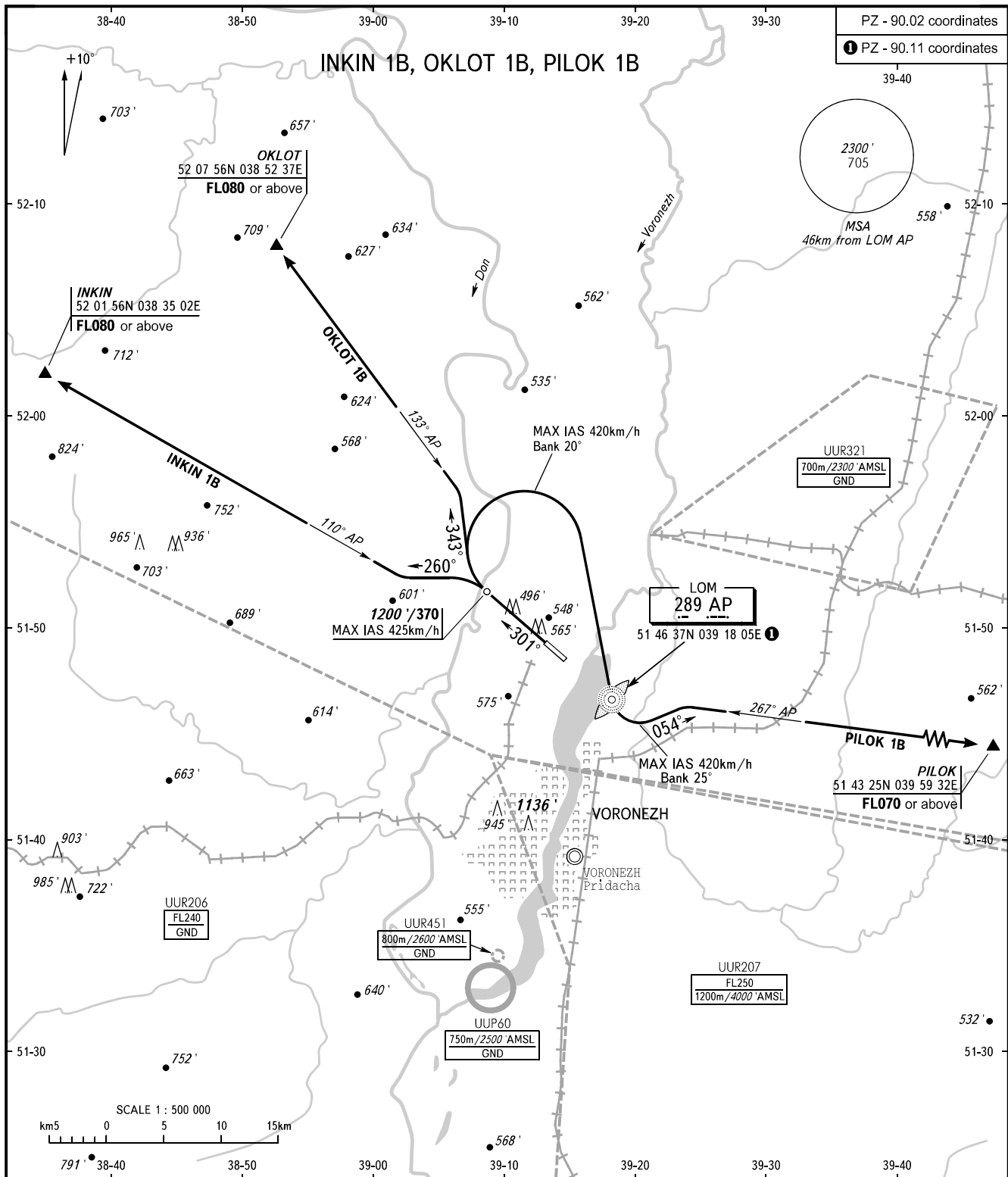


STANDARD DEPARTURE CHART  
INSTRUMENT (SID) - ICAO

TRANSITION  
ALTITUDE: 5000 / 1500

VORONEZH, RUSSIA  
CHERTOVITSKOYE  
RWY 30



TOWER 118.300

**WARNING**  
MNM climb gradients due to the airspace structure:  
- 4.7% up to FL080 for INKIN 1B;  
- 5.5% up to FL080 for OKLOT 1B.

BEARINGS AND TRACKS ARE MAGNETIC  
ALTITUDES AND ELEVATIONS IN FEET AND METRES  
DISTANCES IN KILOMETRES

Alt set: -QNH(QFE on req);  
-hPa(mm on req).