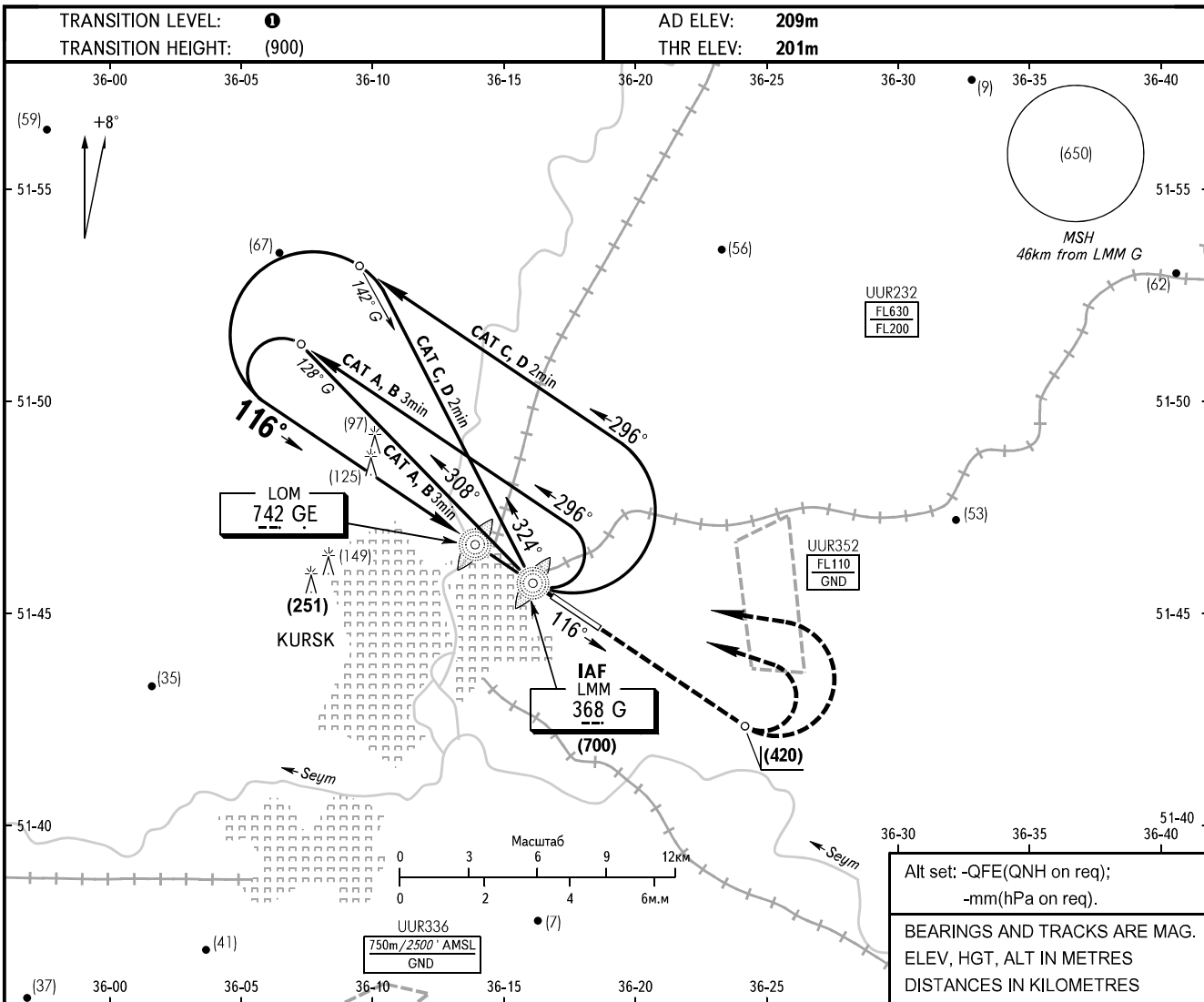


**INSTRUMENT
APPROACH
CHART - ICAO**

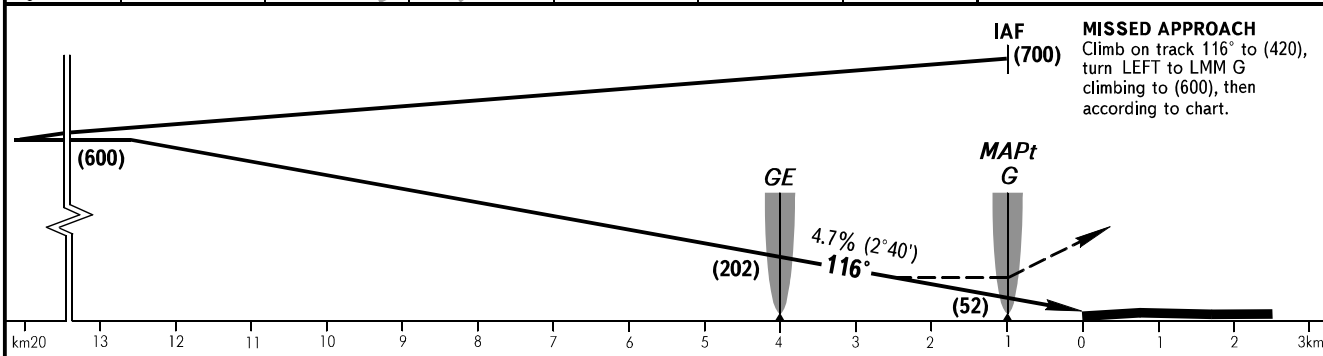
APPROACH **131.500**

**KURSK, RUSSIA
VOSTOCHNY
NDB Z RWY 12**



Alt set: -QFE(QNH on req);
-mm(hPa on req).

BEARINGS AND TRACKS ARE MAG.
ELEV, HGT, ALT IN METRES
DISTANCES IN KILOMETRES



| OCA(H) | | A | B | C | D |
|-------------|-----------|----------|----------|----------|----------|
| Straight-in | NDB (LMM) | 417(220) | 417(220) | 417(220) | 417(220) |
| | | | | | |
| Approach | | | | | |
| | | | | | |
| Circling | | 471(270) | 471(270) | 541(340) | 551(350) |

TRANSITION LEVEL:
- FL050 when atmospheric pressure is 741mm mercury column or above;
- FL060 when atmospheric pressure is less than 741mm mercury column.

WARNING
MAPt at LMM G. Timing not authorized for defining MAPt.

| | | | | | | | | | | | | |
|-----------------|------|-----|-----|-----|-----|-----|-----|-----|-----|-----|-----|-----|
| GROUND SPEED | km/h | 150 | 180 | 210 | 240 | 270 | 300 | 330 | 360 | 390 | 420 | 450 |
| RATE OF DESCENT | m/s | 1.9 | 2.3 | 2.7 | 3.1 | 3.5 | 3.9 | 4.3 | 4.7 | 5.0 | 5.4 | 5.8 |

CHANGE: New chart