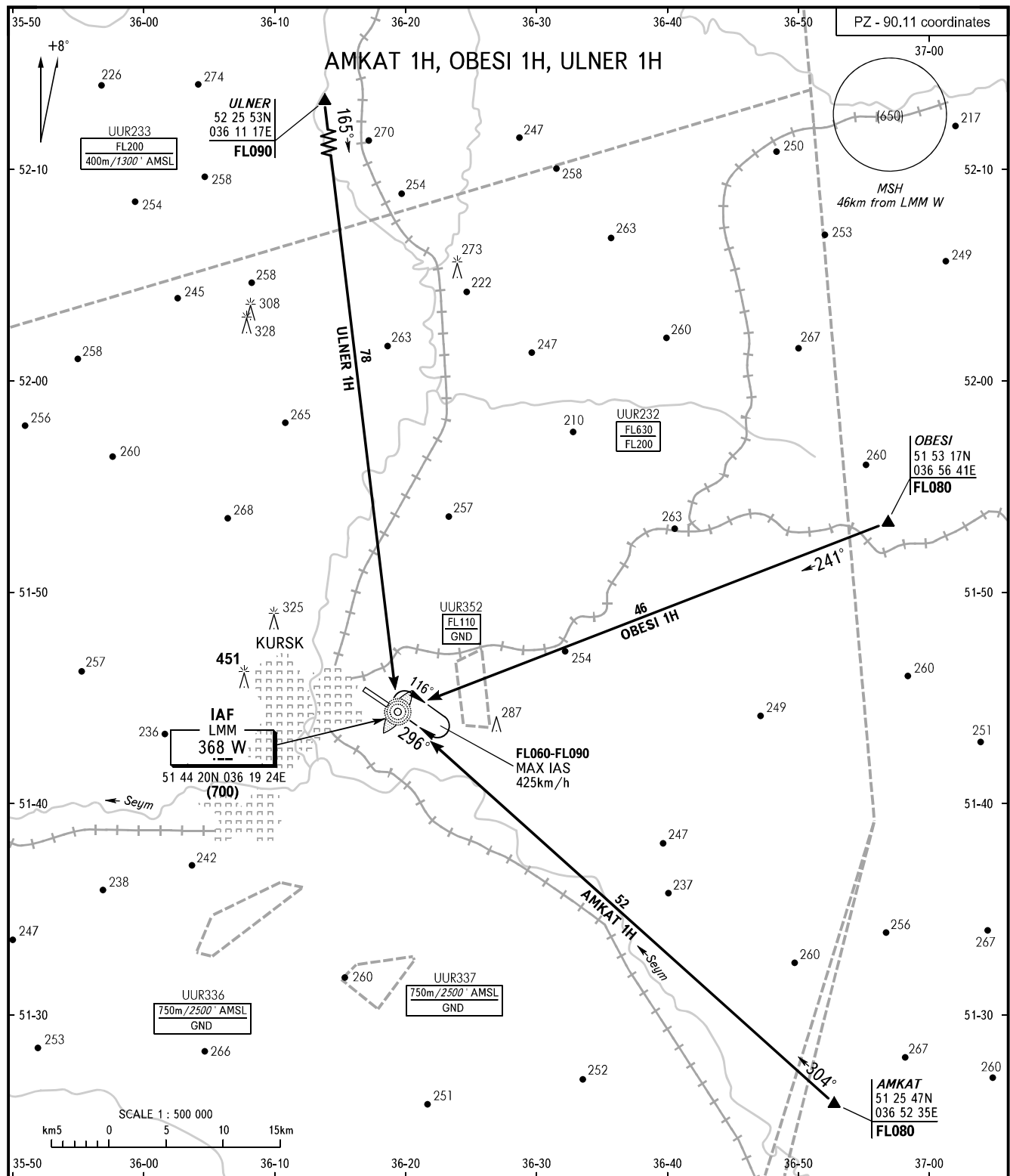


STANDARD ARRIVAL CHART  
INSTRUMENT (STAR) - ICAO

KURSK, RUSSIA  
VOSTOCHNY  
RWY 30

TRANSITION  
LEVEL : **1**



APPROACH **131.500**

**1** TRANSITION LEVEL:  
 - FL050 when atmospheric pressure is 741mm mercury column or above;  
 - FL060 when atmospheric pressure is less than 741mm mercury column.

BEARINGS AND TRACKS ARE MAGNETIC  
 ALTITUDES, HEIGHTS AND ELEVATIONS IN METRES  
 DISTANCES IN KILOMETRES

Alt set: -QFE(QNH on req);  
 -mm(hPa on req).

AIRAC AMDT 04/21

Federal Air Transport Agency

CHANGE: New chart