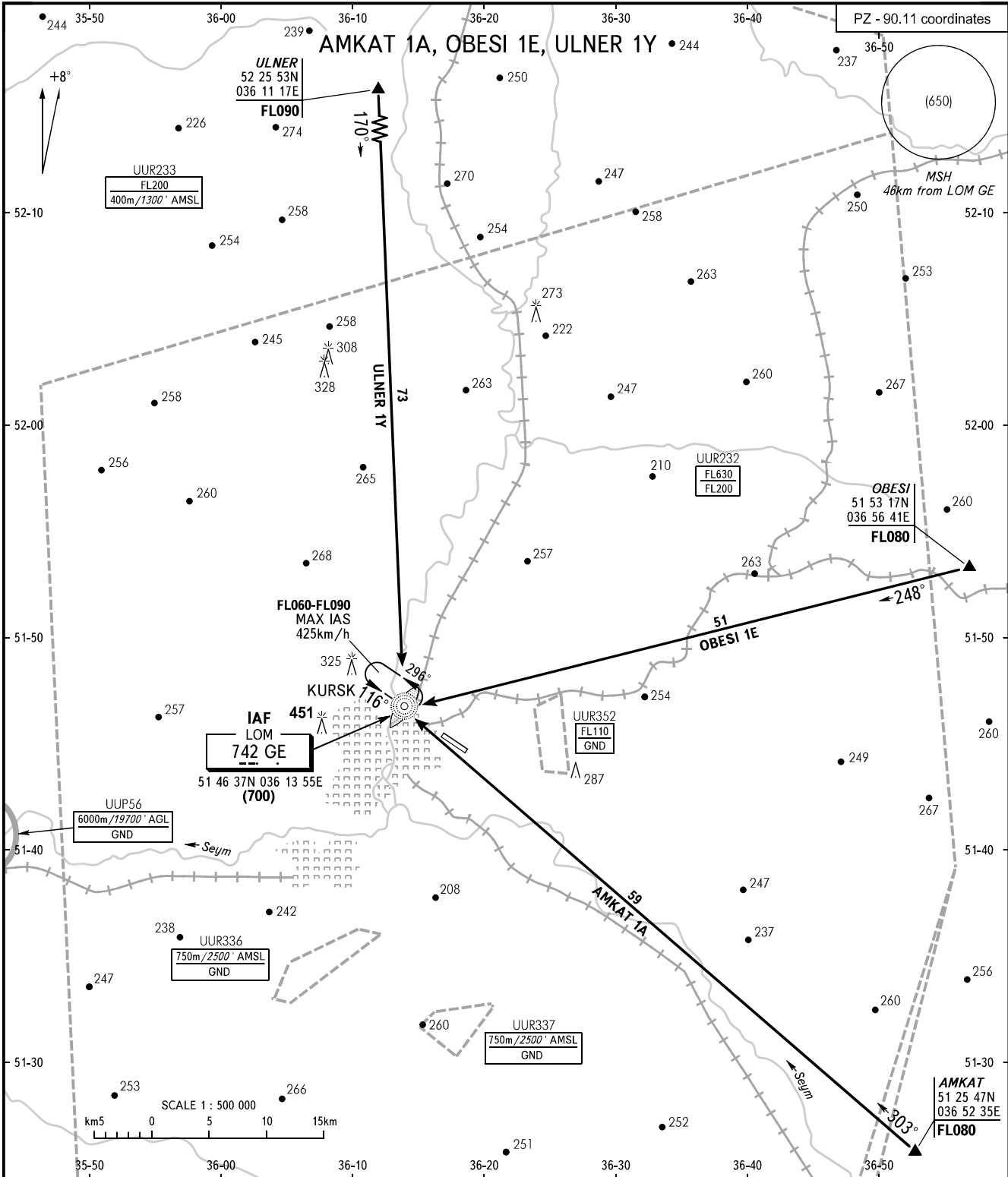


STANDARD ARRIVAL CHART
INSTRUMENT (STAR) - ICAO

KURSK, RUSSIA
VOSTOCHNY
RWY 12

TRANSITION
LEVEL : **1**



APPROACH 131.500

- 1** TRANSITION LEVEL:
- FL050 when atmospheric pressure is 741mm mercury column or above;
 - FL060 when atmospheric pressure is less than 741mm mercury column.

BEARINGS AND TRACKS ARE MAGNETIC
ALTITUDES, HEIGHTS AND ELEVATIONS IN METRES
DISTANCES IN KILOMETRES

Alt set: -QFE(QNH on req);
-mm(hPa on req).

CHANGE: New chart