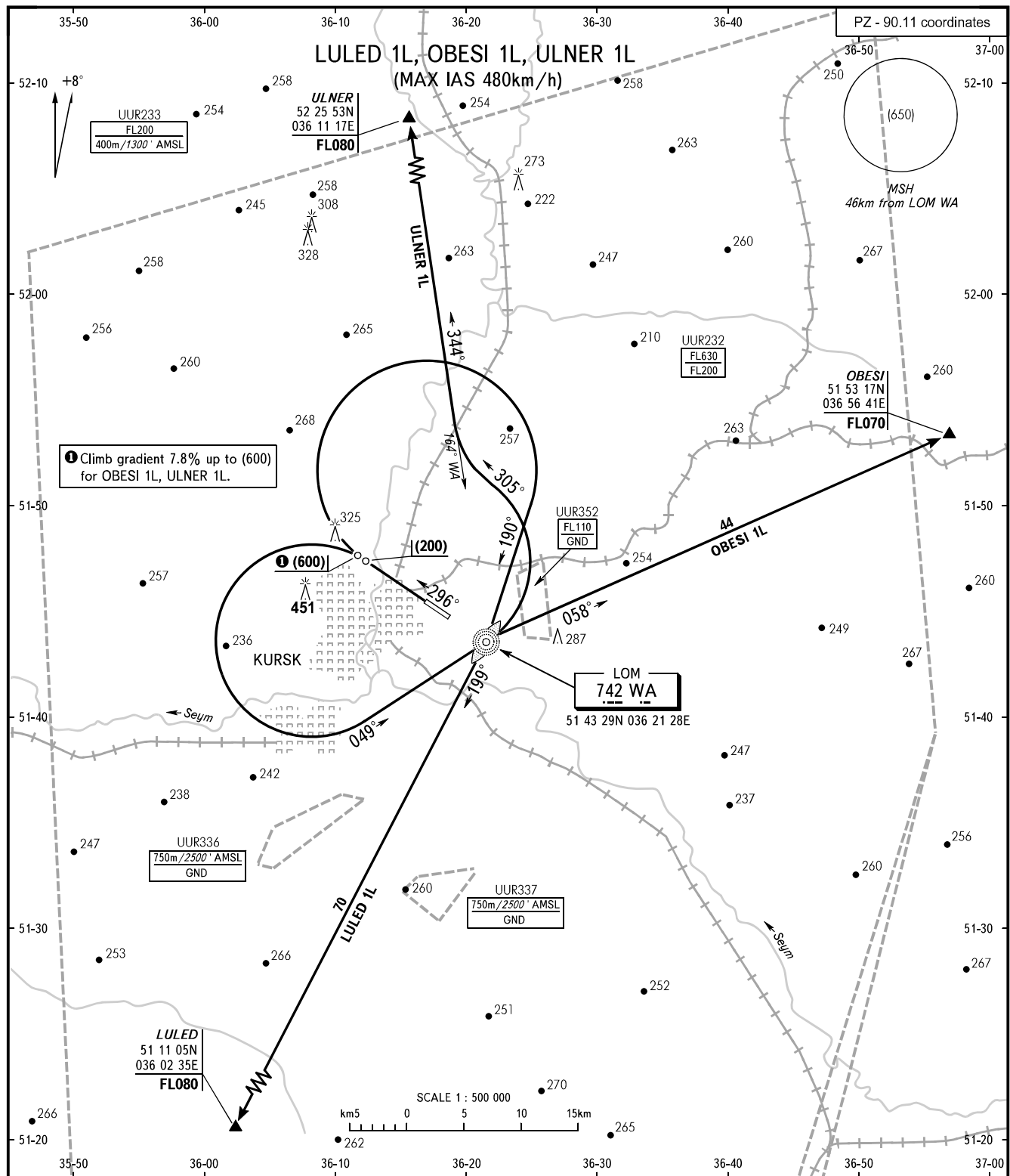


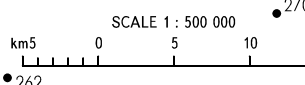
STANDARD DEPARTURE CHART  
INSTRUMENT (SID) - ICAO

TRANSITION  
HEIGHT : (900)

KURSK, RUSSIA  
VOSTOCHNY  
RWY 30



① Climb gradient 7.8% up to (600) for OBESI 1L, ULNER 1L.



APPROACH 131.500

BEARINGS AND TRACKS ARE MAGNETIC  
ALTITUDES, HEIGHTS AND ELEVATIONS IN METRES  
DISTANCES IN KILOMETRES

Alt set: -QFE(QNH on req);  
-mm(hPa on req).