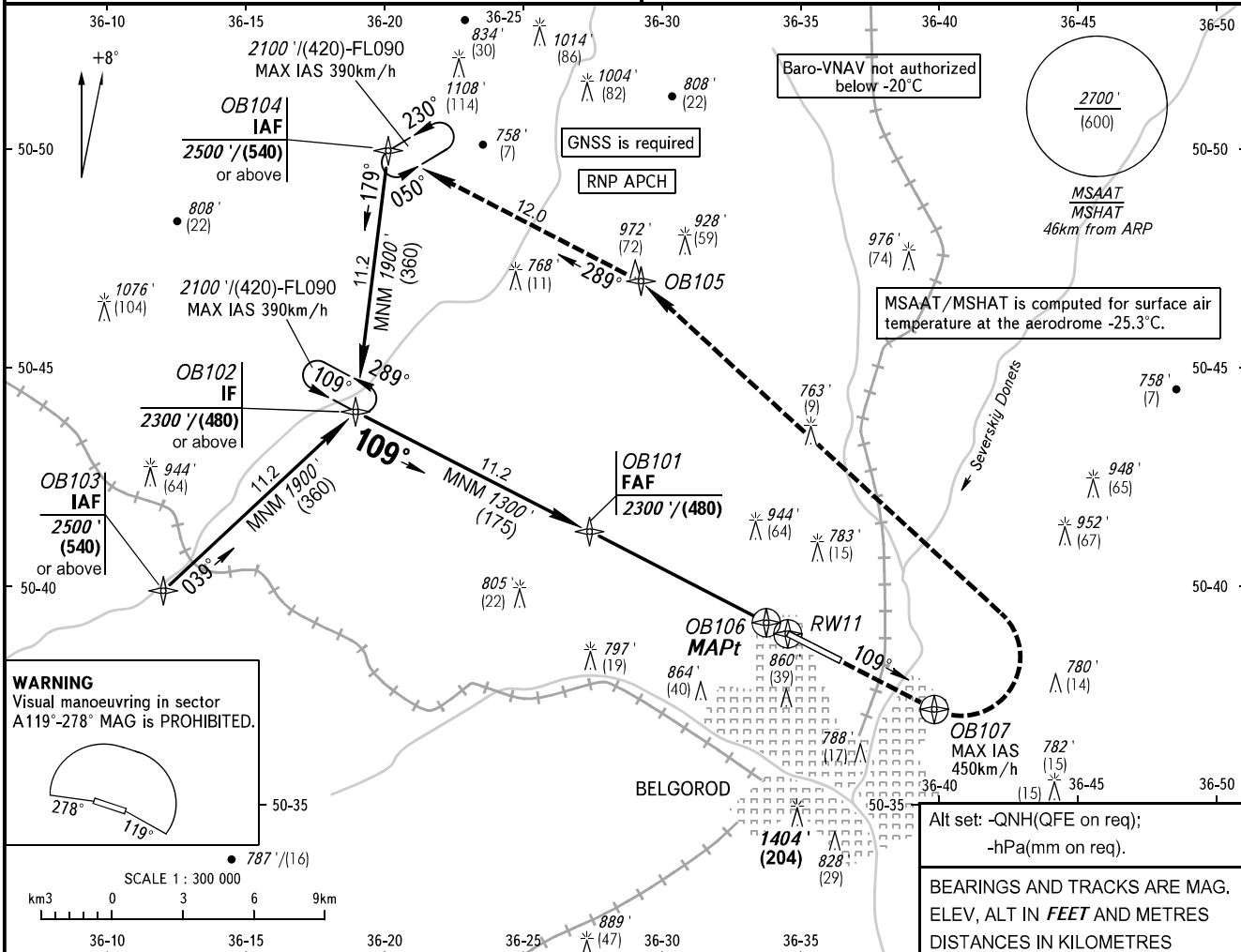


**INSTRUMENT  
APPROACH  
CHART - ICAO**

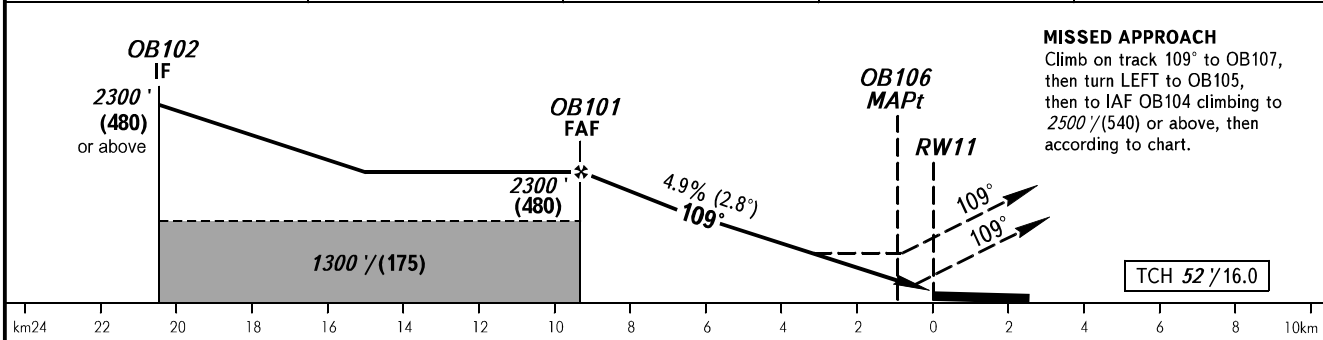
TOWER **118.200**

**BELGOROD, RUSSIA**  
BELGOROD  
RNAV RWY 11

TRANSITION LEVEL: **01**      TRANSITION ALT: **5000'**  
TRANSITION HGT: **(1300)**      AD ELEV: **735' / 224m**  
THR ELEV: **735' / 224.0m**



DIST to RW11	8.0	6.0	4.0	2.0
ALTITUDE/HEIGHT	2090' / (415)	1770' / (315)	1440' / (215)	1120' / (115)



OCA(H)		A	B	C	D						
Straight-in Approach	LNNAV/VNAV	975' (240') (75)	987' (252') (80)	995' (260') (80)	1005' (270') (85)						
	LNNAV	1065' (330') (105)	1065' (330') (105)	1065' (330') (105)	1065' (330') (105)						
Circling		1200' (463') (145)	1240' (504') (155)	1340' (602') (185)	1340' (602') (185)						
GROUND SPEED		km/h	150	180	210	240	270	300	330	360	390
RATE OF DESCENT		m/s	2.2	2.6	3.0	3.5	3.9	4.3	4.8	5.2	5.6
		ft/min	427	512	597	682	768	853	938	1024	1109

**TRANSITION LEVEL:**  
 - FL060 when QNH is 1013 hPa (760mm mercury column) or above;  
 - FL070 when QNH is 977 hPa (733mm mercury column) or above, but less than 1013 hPa (760mm mercury column);  
 - FL080 when QNH is less than 977 hPa (733mm mercury column).

CHANGE: MSAAT/MSHAT