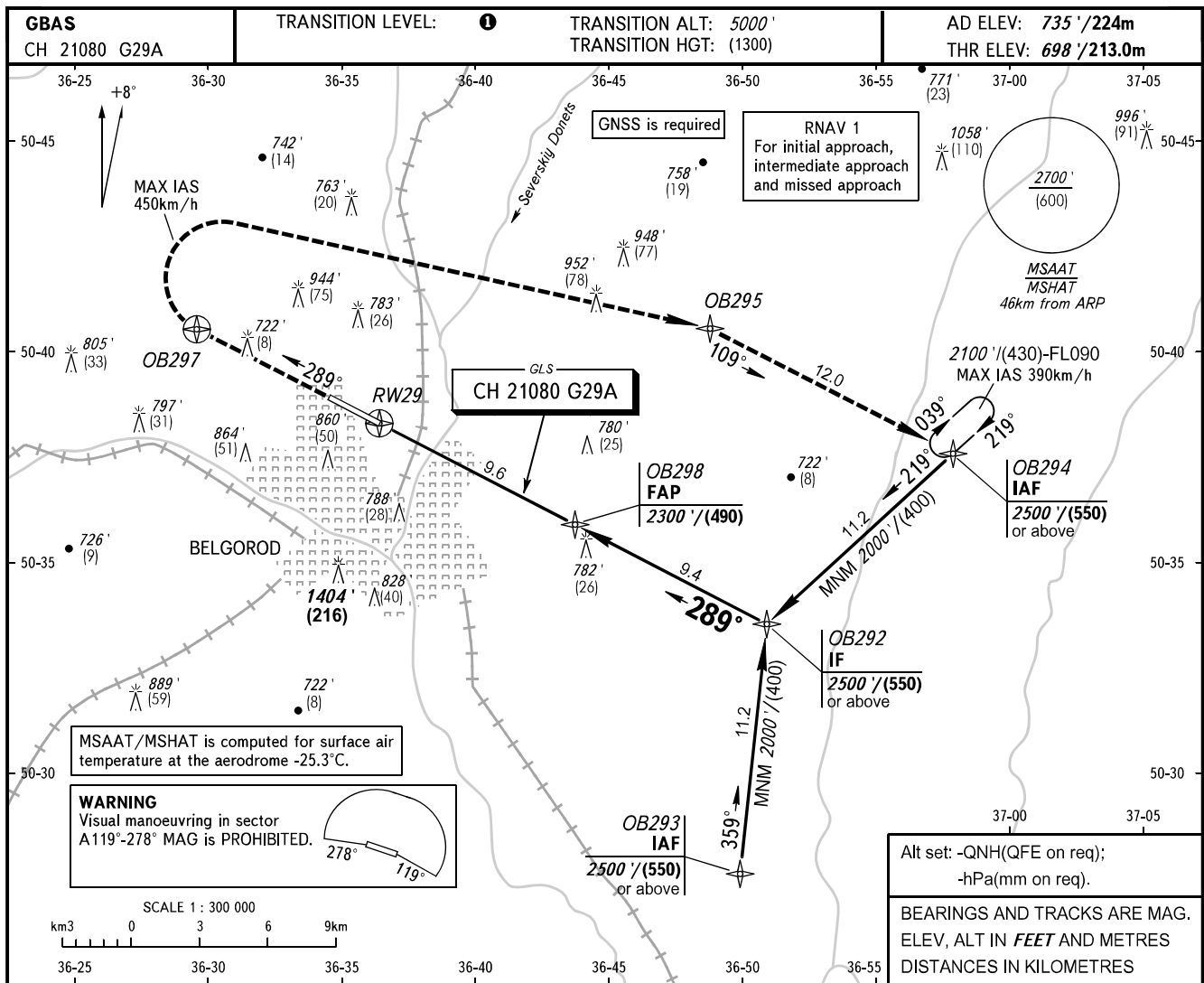


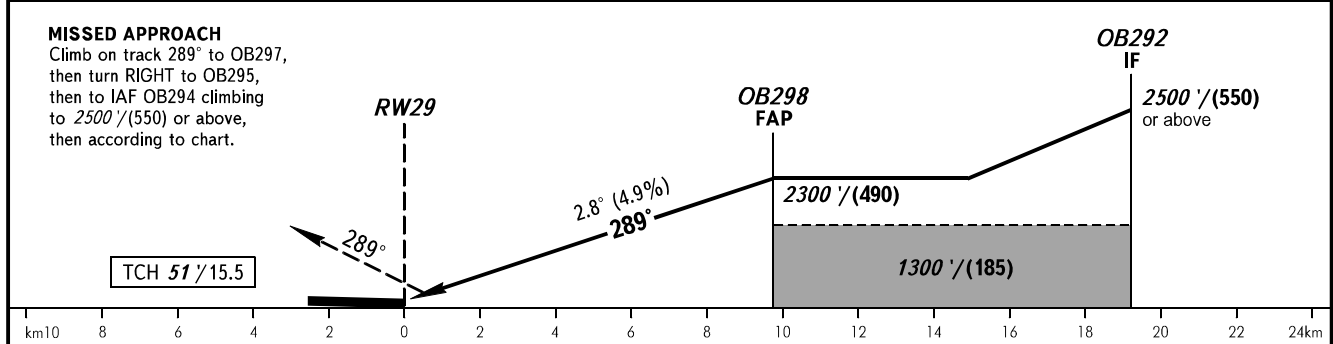
**INSTRUMENT
APPROACH
CHART - ICAO**

BELGOROD, RUSSIA
BELGOROD
GLS RWY 29

TOWER **118.200**



DIST to RW29	2.0	4.0	6.0	8.0
ALTITUDE/HEIGHT	1070'/(115)	1380'/(210)	1700'/(305)	2010'/(400)



OCA(H)	MNM climb gradient	A				B				C				D			
		1	2	3	4	1	2	3	4	1	2	3	4	1	2	3	4
Straight-in Approach	2.5%	904' (206')	916' (218')	930' (231')	940' (242')	895' (197')	908' (209')	916' (217')	926' (228')	1200' (463')	1240' (504')	1340' (602')	1340' (602')	1013 hPa	977 hPa	1013 hPa	977 hPa
	4.0%	895' (197')	908' (209')	916' (217')	926' (228')	1200' (463')	1240' (504')	1340' (602')	1340' (602')	977 hPa	977 hPa	977 hPa	977 hPa	977 hPa	977 hPa	977 hPa	977 hPa
Circling		1200' (463')	1240' (504')	1340' (602')	1340' (602')												
GROUND SPEED		km/h	150	180	210	240	270	300	330	360	390						
RATE OF DESCENT		m/s	2.2	2.6	3.0	3.5	3.9	4.3	4.8	5.2	5.6						
		ft/min	427	512	597	682	768	853	938	1024	1109						