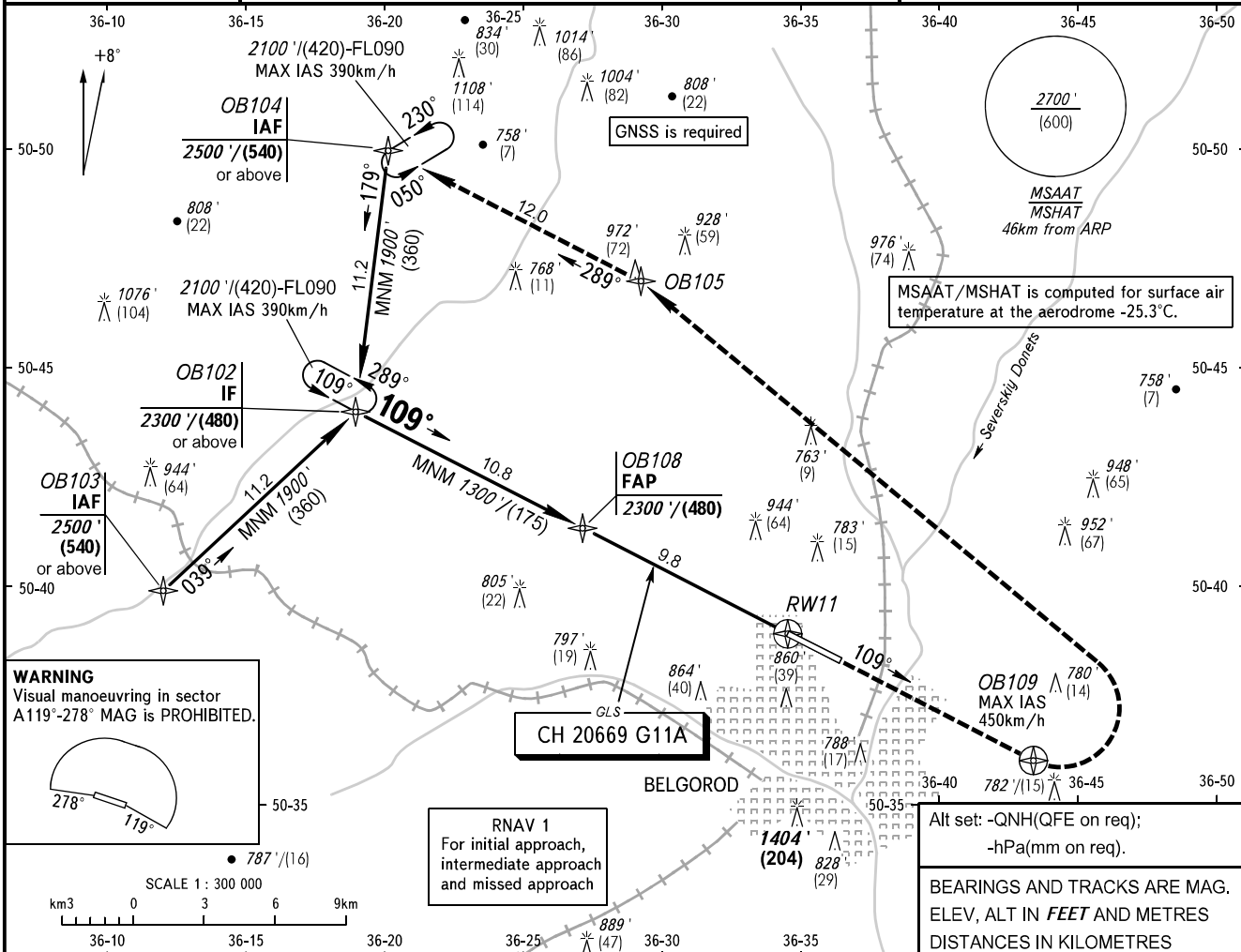


**INSTRUMENT
APPROACH
CHART - ICAO**

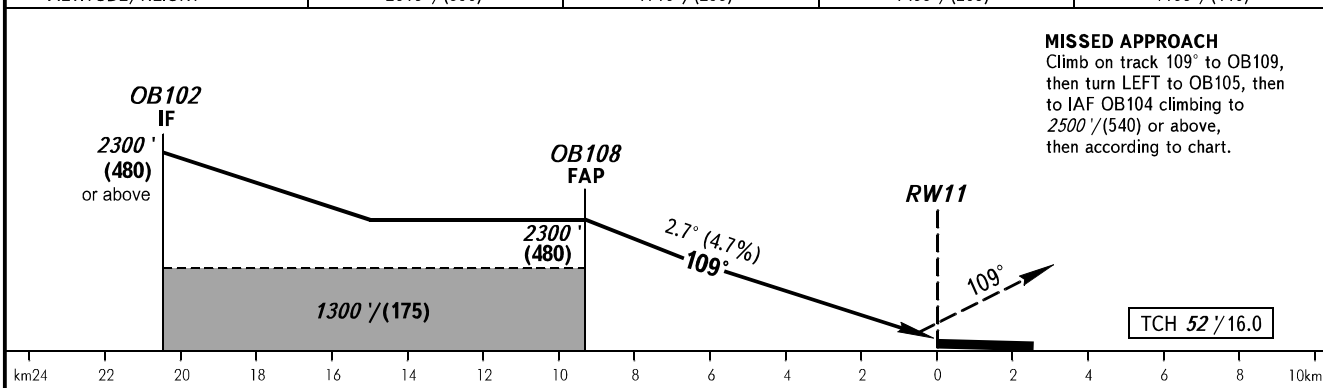
TOWER **118.200**

BELGOROD, RUSSIA
BELGOROD
GLS RWY 11

GBAS CH 20669 G11A **TRANSITION LEVEL:** 1 **TRANSITION ALT:** 5000' **AD ELEV:** 735' / 224m
TRANSITION HGT: (1300) **THR ELEV:** 735' / 224.0m



DIST to RW11	8.0	6.0	4.0	2.0
ALTITUDE/HEIGHT	2010' / (390)	1710' / (295)	1400' / (205)	1100' / (110)



OCA(H)		A	B	C	D	1 TRANSITION LEVEL:					
Straight-in Approach		920' (185') (57)	932' (197') (61)	941' (205') (63)	951' (215') (66)	- FL060 when QNH is 1013 hPa (760mm mercury column) or above;					
		1200' (463') (145)	1240' (504') (155)	1340' (602') (185)	1340' (602') (185)	- FL070 when QNH is 977 hPa (733mm mercury column) or above, but less than 1013 hPa (760mm mercury column);					
Circling						- FL080 when QNH is less than 977 hPa (733mm mercury column).					
GROUND SPEED		km/h	150	180	210	240	270	300	330	360	390
RATE OF DESCENT		m/s	2.2	2.6	3.0	3.5	3.9	4.3	4.8	5.2	5.6
		ft/min	427	512	597	682	768	853	938	1024	1109

CHANGE: MSAAT/MSHAT