

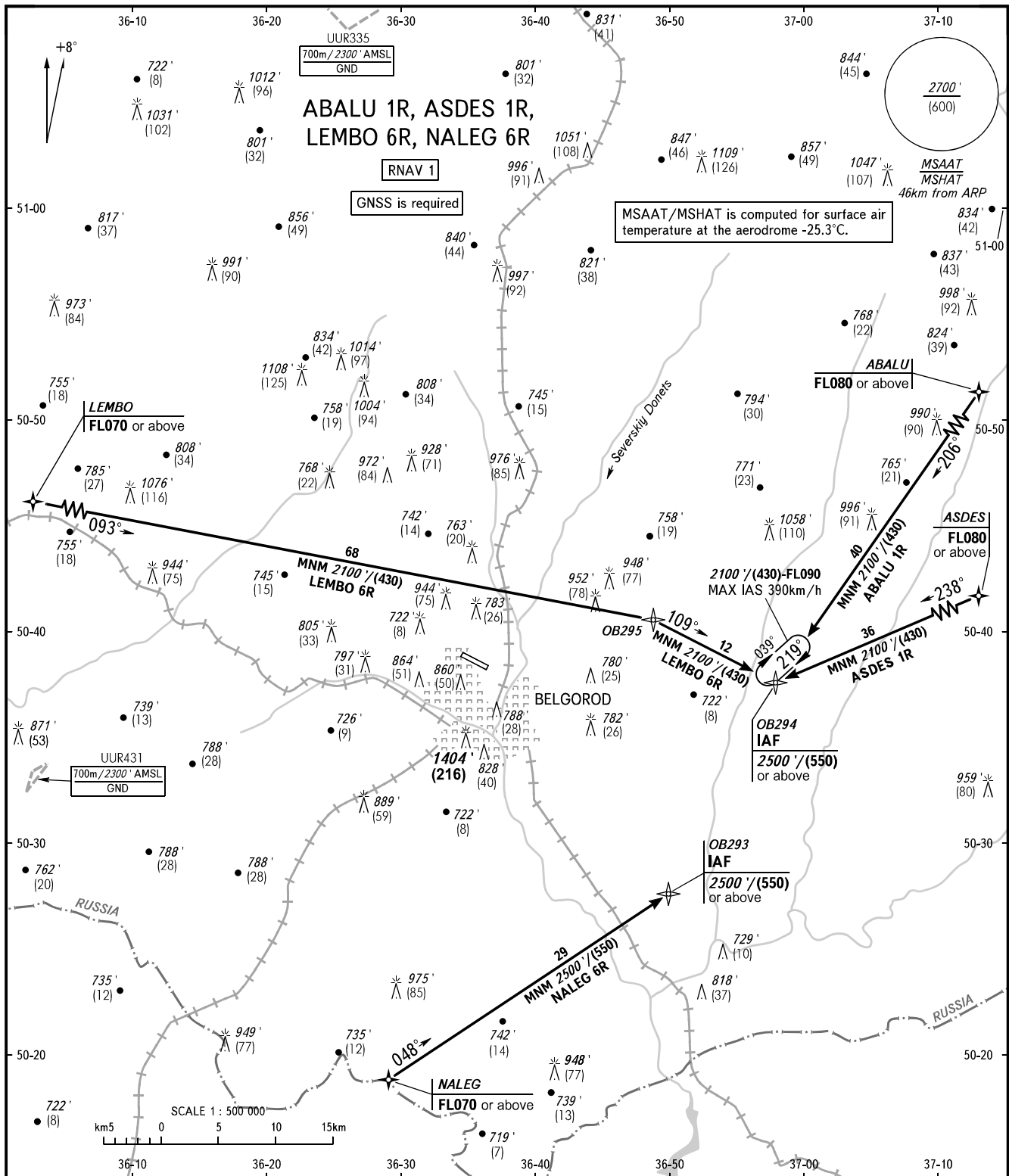
STANDARD ARRIVAL CHART
INSTRUMENT (STAR) - ICAO

BELGOROD, RUSSIA

BELGOROD

RNAV RWY 29

TRANSITION
LEVEL : **1**



TOWER **118.200**

Descent gradients are 4.7% for ASDES 1R, 4.7% for NALEG 6R, 4.3% for ABALU 1R due to airspace structure.

1 TRANSITION LEVEL:

- FLO60 when QNH is 1013 hPa (760mm mercury column) or above;
- FLO70 when QNH is 977 hPa (733mm mercury column) or above, but less than 1013 hPa (760mm mercury column);
- FLO80 when QNH is less than 977 hPa (733mm mercury column).

BEARINGS AND TRACKS ARE MAGNETIC
ALTITUDES AND ELEVATIONS IN **FEET**
HEIGHTS IN METRES
DISTANCES IN KILOMETRES

Alt set: -QNH(QFE on req);
-hPa(mm on req).