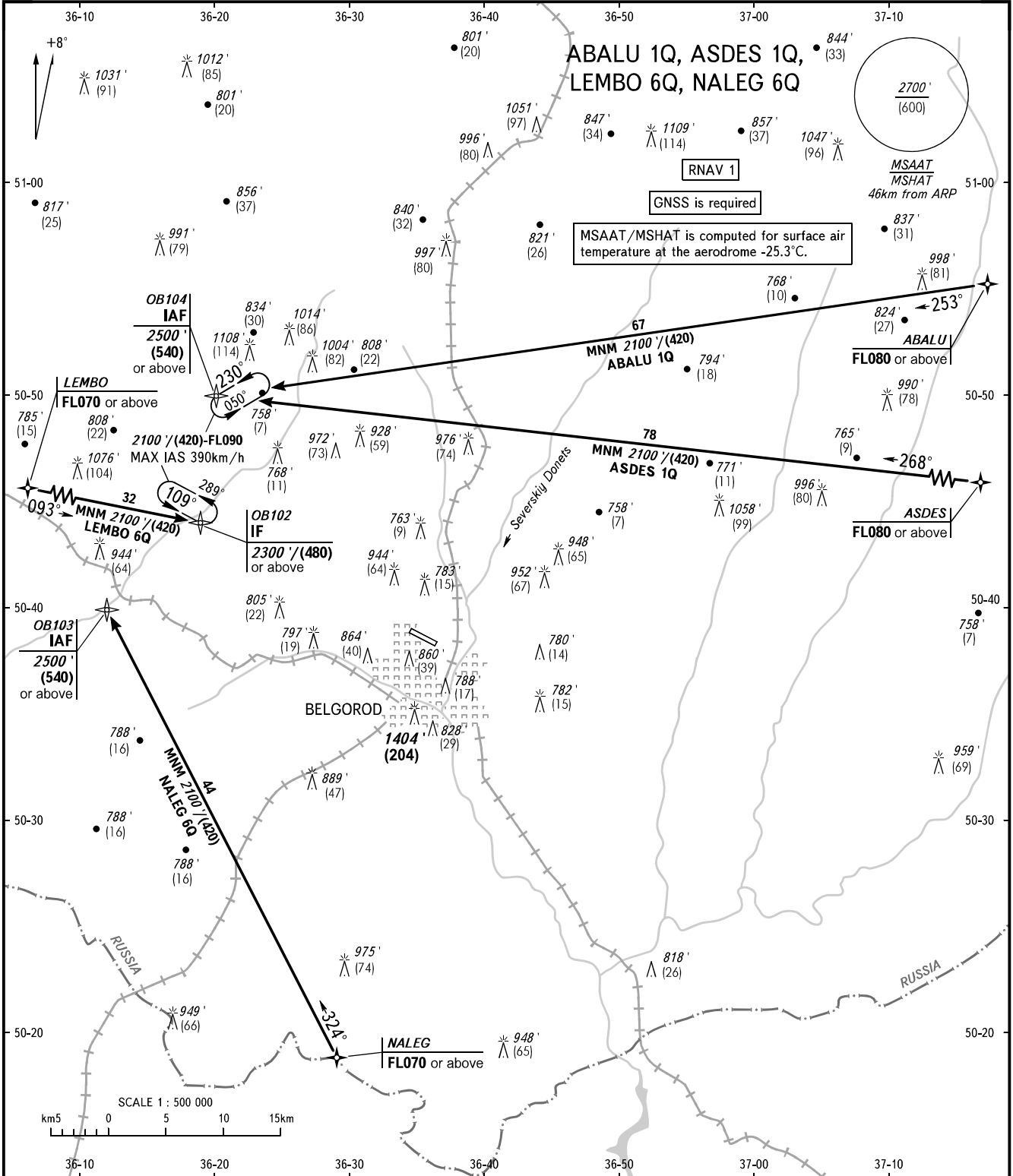


STANDARD ARRIVAL CHART  
INSTRUMENT (STAR) - ICAO

BELGOROD, RUSSIA  
BELGOROD  
RNAV RWY 11

TRANSITION  
LEVEL : 1



TOWER 118.200

Descent gradient is 4.5% for LEMBO 6Q due to airspace structure.

- 1 TRANSITION LEVEL:
- FL060 when QNH is 1013 hPa (760mm mercury column) or above;
  - FL070 when QNH is 977 hPa (733mm mercury column) or above, but less than 1013 hPa (760mm mercury column);
  - FL080 when QNH is less than 977 hPa (733mm mercury column).

BEARINGS AND TRACKS ARE MAGNETIC  
ALTITUDES AND ELEVATIONS IN FEET  
HEIGHTS IN METRES  
DISTANCES IN KILOMETRES

Alt set: -QNH(QFE on req);  
-hPa(mm on req).

CHANGE: MSAAT/MSHAT