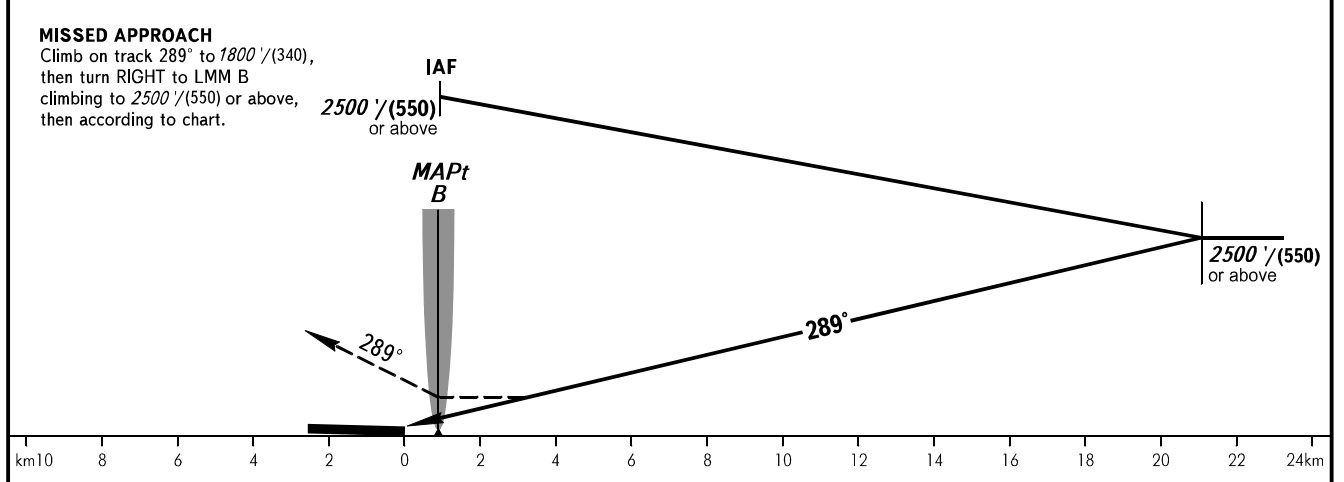
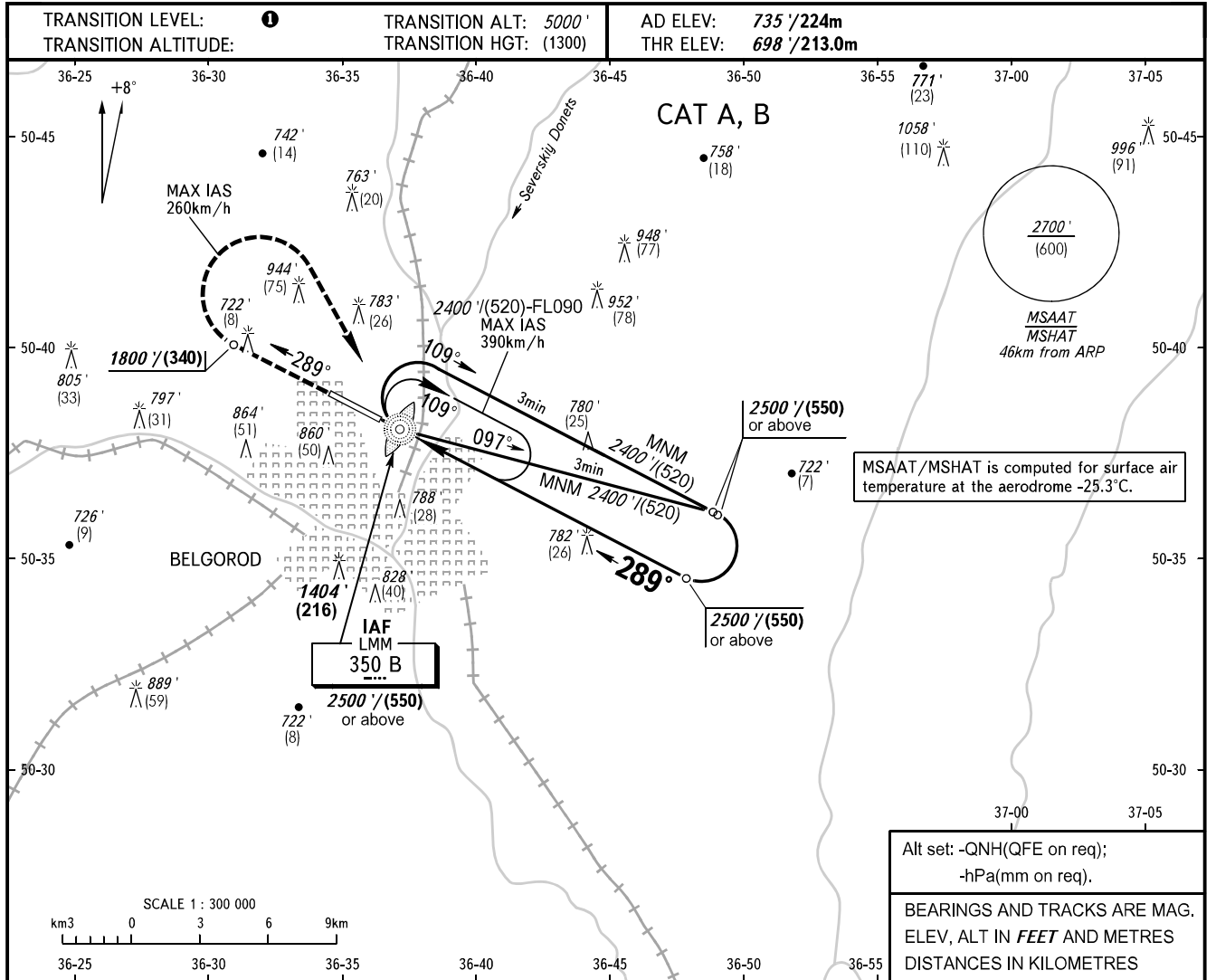


**INSTRUMENT
APPROACH
CHART - ICAO**

TOWER **118.200**

BELGOROD, RUSSIA
BELGOROD
NDB W RWY 29



OCA(H)		A	B	C	D
Straight-in Approach		1080' (378') (120)	1080' (378') (120)		
Circling		1200' (463') (145)	1240' (504') (155)		

1 TRANSITION LEVEL:
 - FL060 when QNH is 1013 hPa (760mm mercury column) or above;
 - FL070 when QNH is 977 hPa (733mm mercury column) or above, but less than 1013 hPa (760mm mercury column);
 - FL080 when QNH is less than 977 hPa (733mm mercury column).

WARNING
 Visual manoeuvring in sector A119°-278° MAG is PROHIBITED.

CHANGE: MSAAT/MSHAT