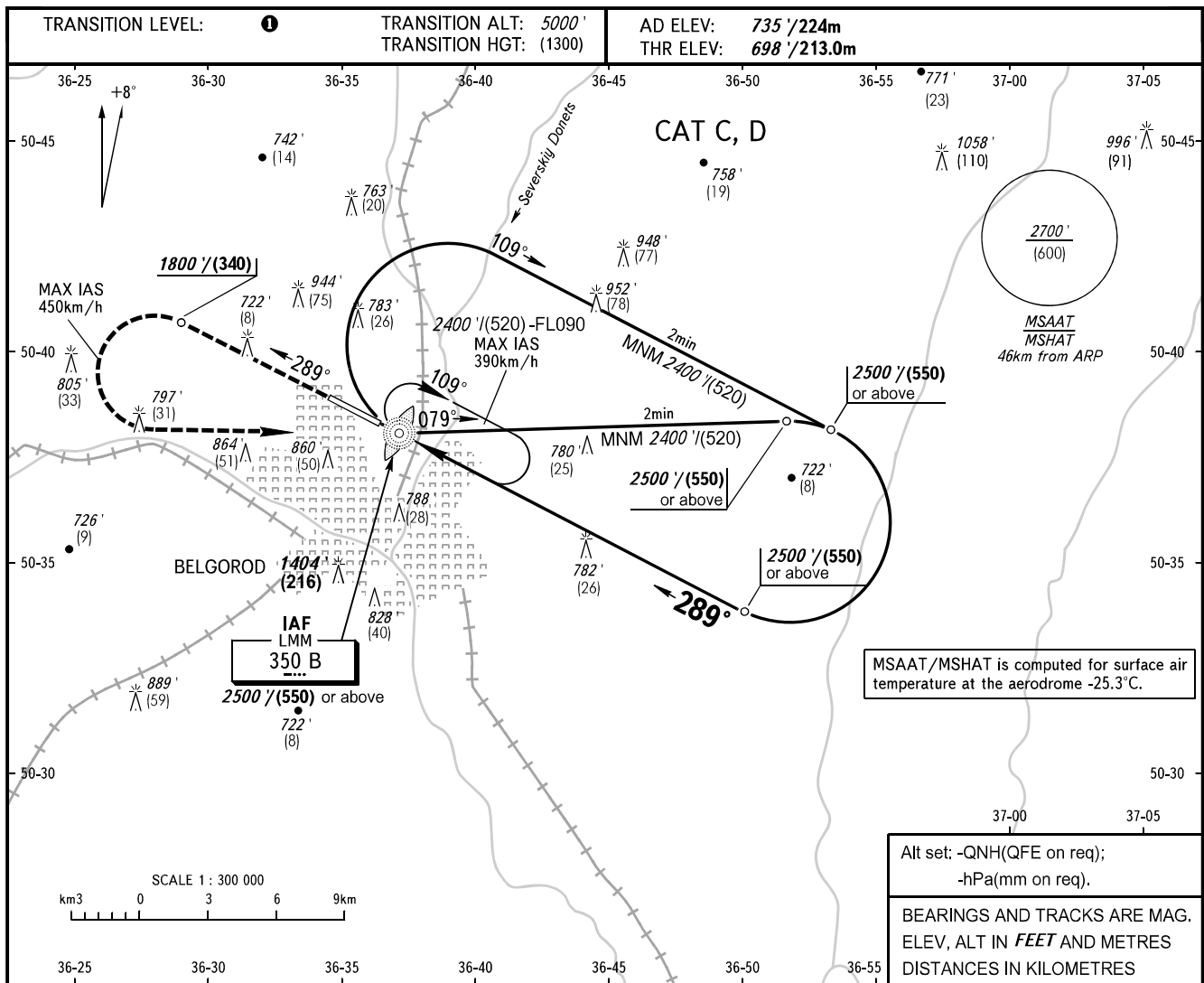


INSTRUMENT
APPROACH
CHART - ICAO

BELGOROD, RUSSIA
BELGOROD
NDB X RWY 29

TOWER 118.200



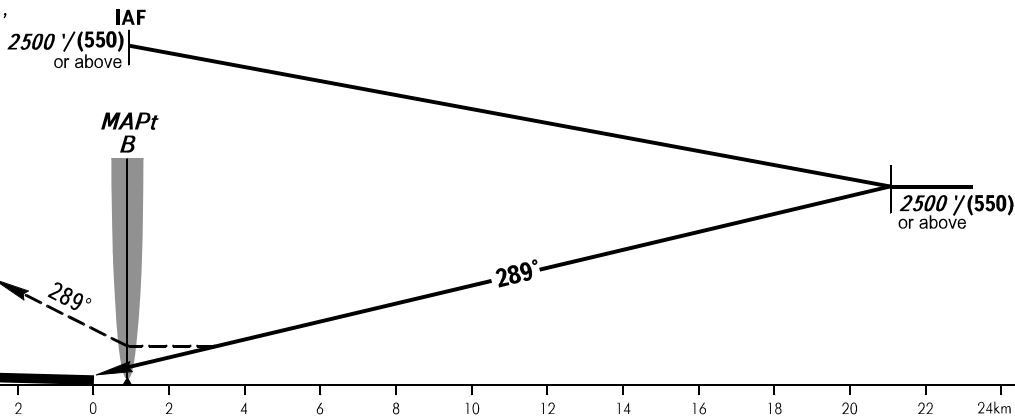
MSAAT/MSHAT is computed for surface air temperature at the aerodrome -25.3°C.

Alt set: -QNH(QFE on req);
-hPa(mm on req).

BEARINGS AND TRACKS ARE MAG.
ELEV, ALT IN FEET AND METRES
DISTANCES IN KILOMETRES

MISSED APPROACH

Climb on track 289° to 1800' (549m), then turn LEFT to LMM B climbing to 2500' (762m) or above, then according to chart.



OCA(H)		A	B	C	D
Straight-in Approach				1100' (396') (125)	1100' (396') (125)
				1340' (602') (185)	1340' (602') (185)
Circling				1340' (602') (185)	1340' (602') (185)

1 TRANSITION LEVEL:
- FL060 when QNH is 1013 hPa (760mm mercury column) or above;
- FL070 when QNH is 977 hPa (733mm mercury column) or above, but less than 1013 hPa (760mm mercury column);
- FL080 when QNH is less than 977 hPa (733mm mercury column).

WARNING
Visual manoeuvring in sector A119°-278° MAG is PROHIBITED.

