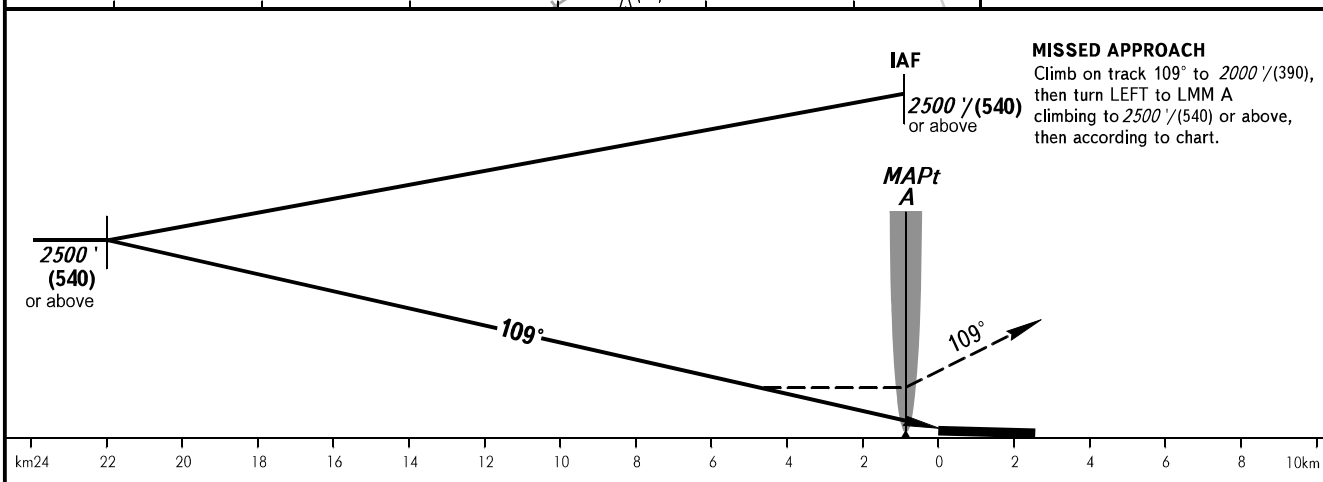
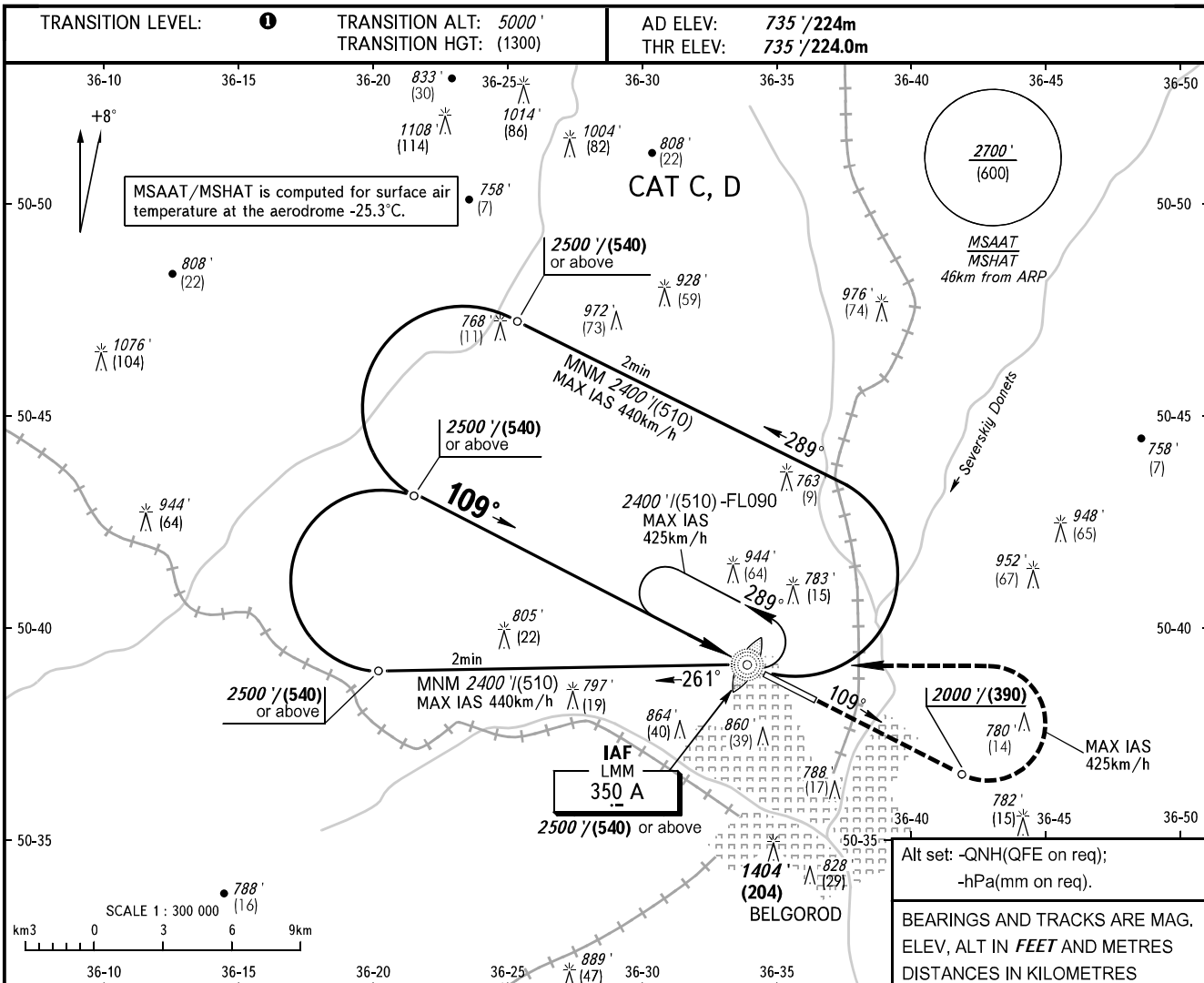


**INSTRUMENT
APPROACH
CHART - ICAO**

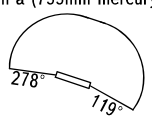
TOWER **118.200**

BELGOROD, RUSSIA
BELGOROD
NDB X RWY 11



| OCA(H) | A | B | C | D |
|----------------------|---|---|-----------------------|-----------------------|
| Straight-in Approach | | | 1380' (636') (200) | 1380' (636') (200) |
| Circling | | | 1380' (636') (200) | 1380' (636') (200) |

1 TRANSITION LEVEL:
 - FLO60 when QNH is 1013 hPa (760mm mercury column) or above;
 - FLO70 when QNH is 977 hPa (733mm mercury column) or above, but less than 1013 hPa (760mm mercury column);
 - FLO80 when QNH is less than 977 hPa (733mm mercury column).
WARNING
 Visual manoeuvring in sector A 119°-278° MAG is PROHIBITED.



CHANGE: MSAAT/MSHAT