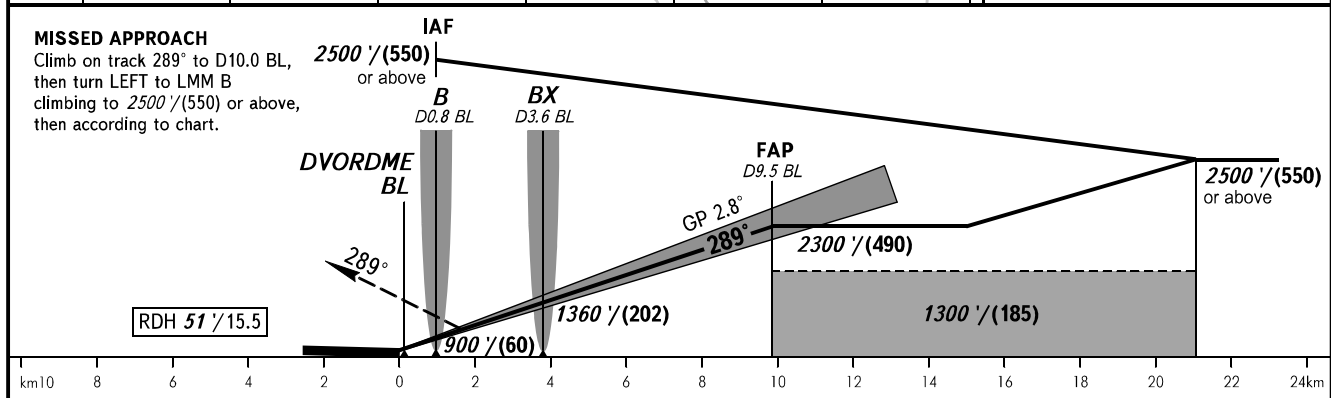
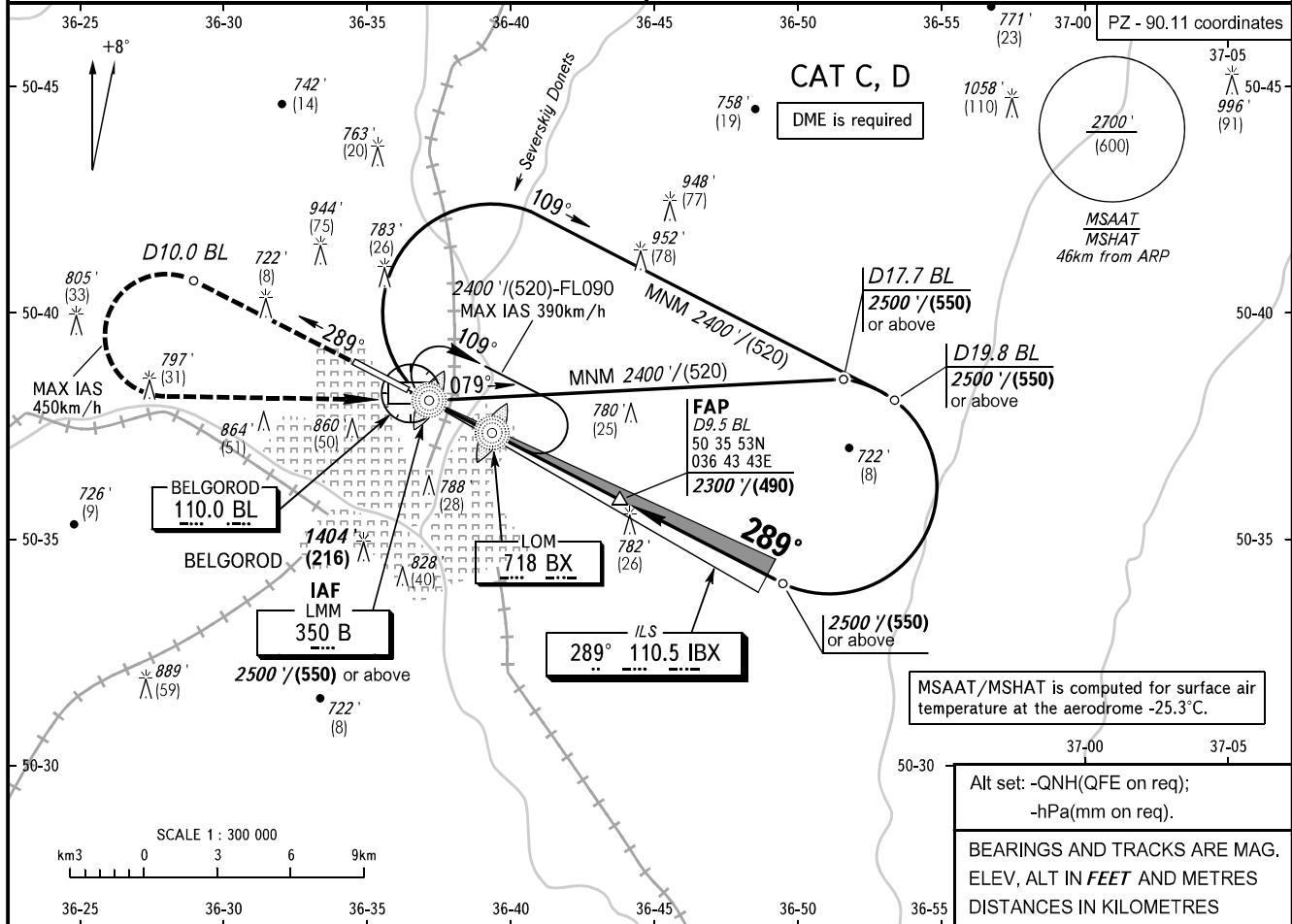


**INSTRUMENT  
APPROACH  
CHART - ICAO**

**BELGOROD, RUSSIA  
BELGOROD  
ILS W RWY 29**

TOWER **118.200**

TRANSITION LEVEL: **01**      TRANSITION ALT: **5000'**      AD ELEV: **735' / 224m**  
 TRANSITION HGT: **(1300)**      THR ELEV: **698' / 213.0m**



OCA(H)	MNM climb gradient	A	B	C	D
Straight-in Approach	2.5%			930' (231') (71)	940' (242') (74)
	4.0%			916' (217') (67)	926' (228') (70)
Circling				1340' (602') (185)	1340' (602') (185)

**1** TRANSITION LEVEL:  
- FL060 when QNH is 1013 hPa (760mm mercury column) or above;  
- FL070 when QNH is 977 hPa (733mm mercury column) or above, but less than 1013 hPa (760mm mercury column);  
- FL080 when QNH is less than 977 hPa (733mm mercury column).

**WARNING**  
Visual manoeuvring in sector A 119°-278° MAG is PROHIBITED.

GROUND SPEED	km/h	150	180	210	240	270	300	330	360	390
RATE OF DESCENT	m/s	2.2	2.6	3.0	3.5	3.9	4.3	4.8	5.2	5.6
	ft/min	427	512	597	682	768	853	938	1024	1109