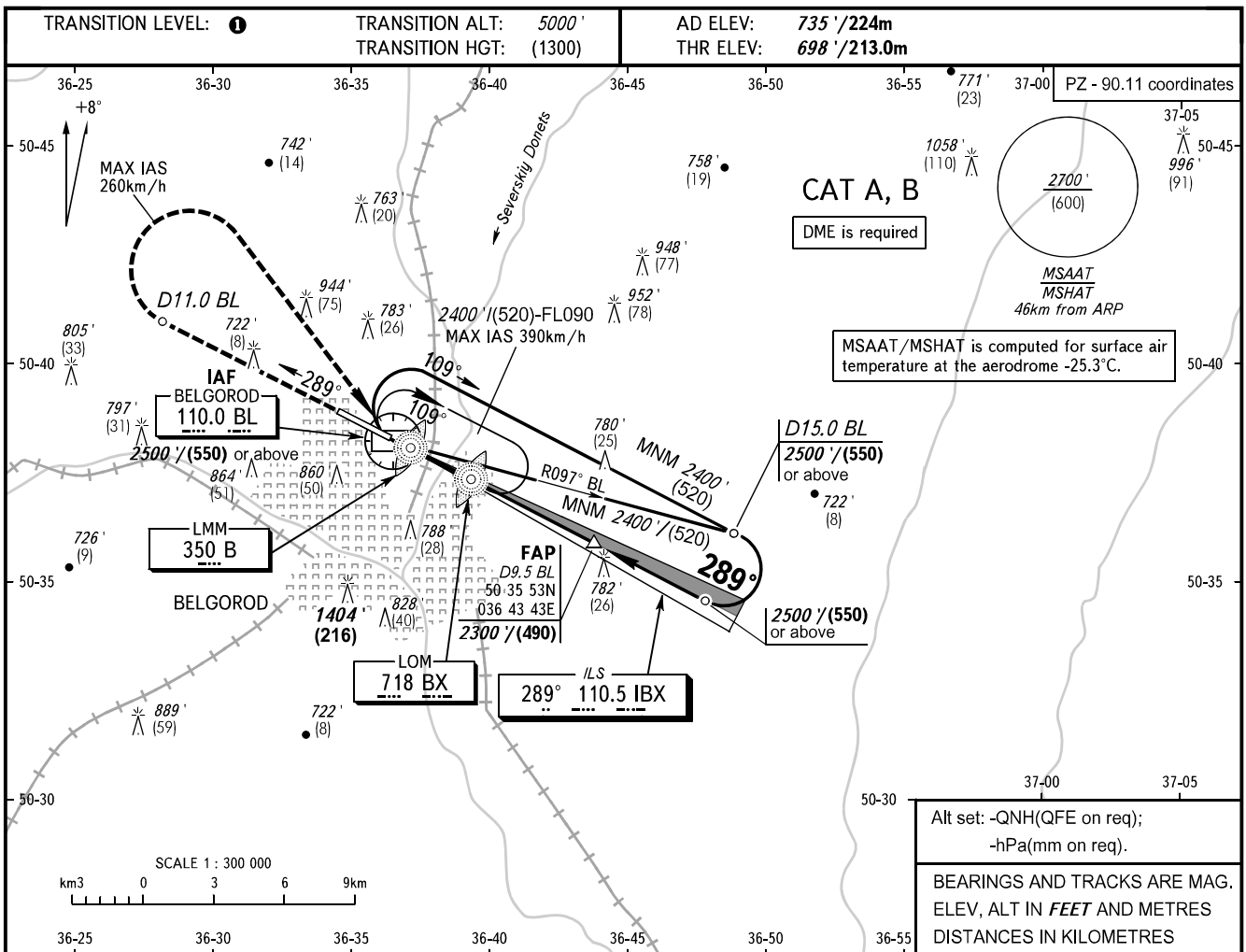


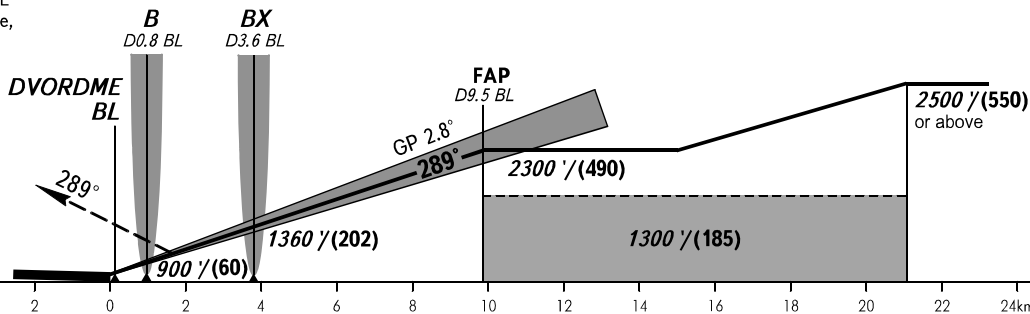
**INSTRUMENT
APPROACH
CHART - ICAO**

TOWER **118.200**

**BELGOROD, RUSSIA
BELGOROD
ILS X RWY 29**



MISSED APPROACH
 Climb on track 289° to D11.0 BL,
 then turn RIGHT to DVORDME BL
 climbing to 2500'/(550) or above,
 then according to chart.



OCA(H)	MNM climb gradient	A				B				C				D			
		904' (206') (63)		916' (218') (67)		895' (197') (61)		908' (209') (65)									
Straight-in Approach	2.5%	904' (206') (63)		916' (218') (67)													
	4.0%	895' (197') (61)		908' (209') (65)													
Circling		1200' (463') (145)		1240' (504') (155)													
GROUND SPEED		km/h	150	180	210	240	270	300	330	360	390						
RATE OF DESCENT		m/s	2.2	2.6	3.0	3.5	3.9	4.3	4.8	5.2	5.6						
		ft/min	427	512	597	682	768	853	938	1024	1109						

1 **TRANSITION LEVEL:**
 - FL060 when QNH is 1013 hPa (760mm mercury column) or above;
 - FL070 when QNH is 977 hPa (733mm mercury column) or above, but less than 1013 hPa (760mm mercury column);
 - FL080 when QNH is less than 977 hPa (733mm mercury column).

WARNING
 Visual manoeuvring in sector
 A119°-278° MAG is PROHIBITED.

CHANGE: MSAAT/MSHAT