

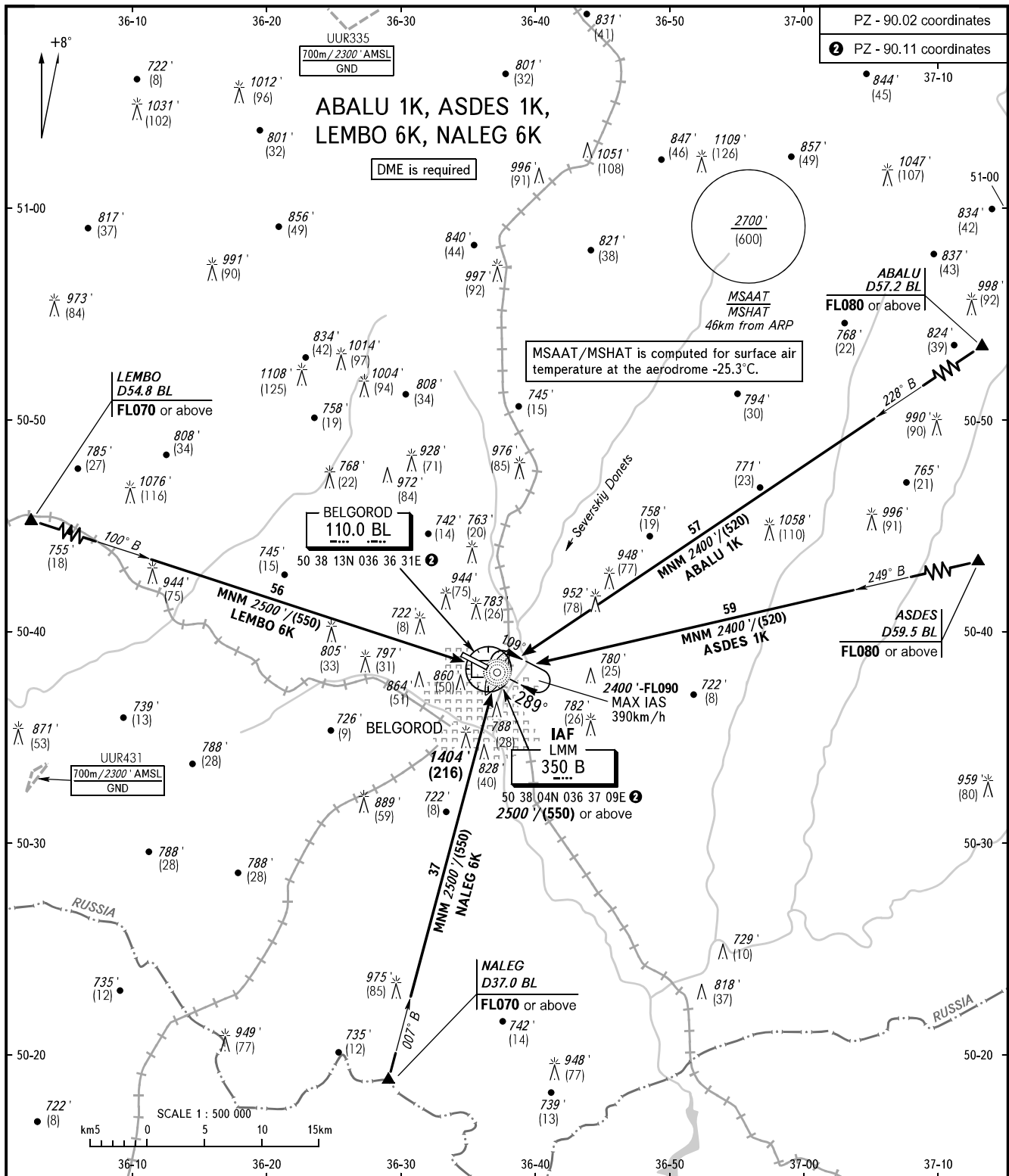
STANDARD ARRIVAL CHART
INSTRUMENT (STAR) - ICAO

BELGOROD, RUSSIA

BELGOROD

RWY 29

TRANSITION
LEVEL : 1



TOWER 118.200

1 TRANSITION LEVEL:

- FL060 when QNH is 1013 hPa (760mm mercury column) or above;
- FL070 when QNH is 977 hPa (733mm mercury column) or above, but less than 1013 hPa (760mm mercury column);
- FL080 when QNH is less than 977 hPa (733mm mercury column).

BEARINGS AND TRACKS ARE MAGNETIC
ALTITUDES AND ELEVATIONS IN FEET
HEIGHTS IN METRES
DISTANCES IN KILOMETRES

Alt set: -QNH(QFE on req);
-hPa(mm on req).