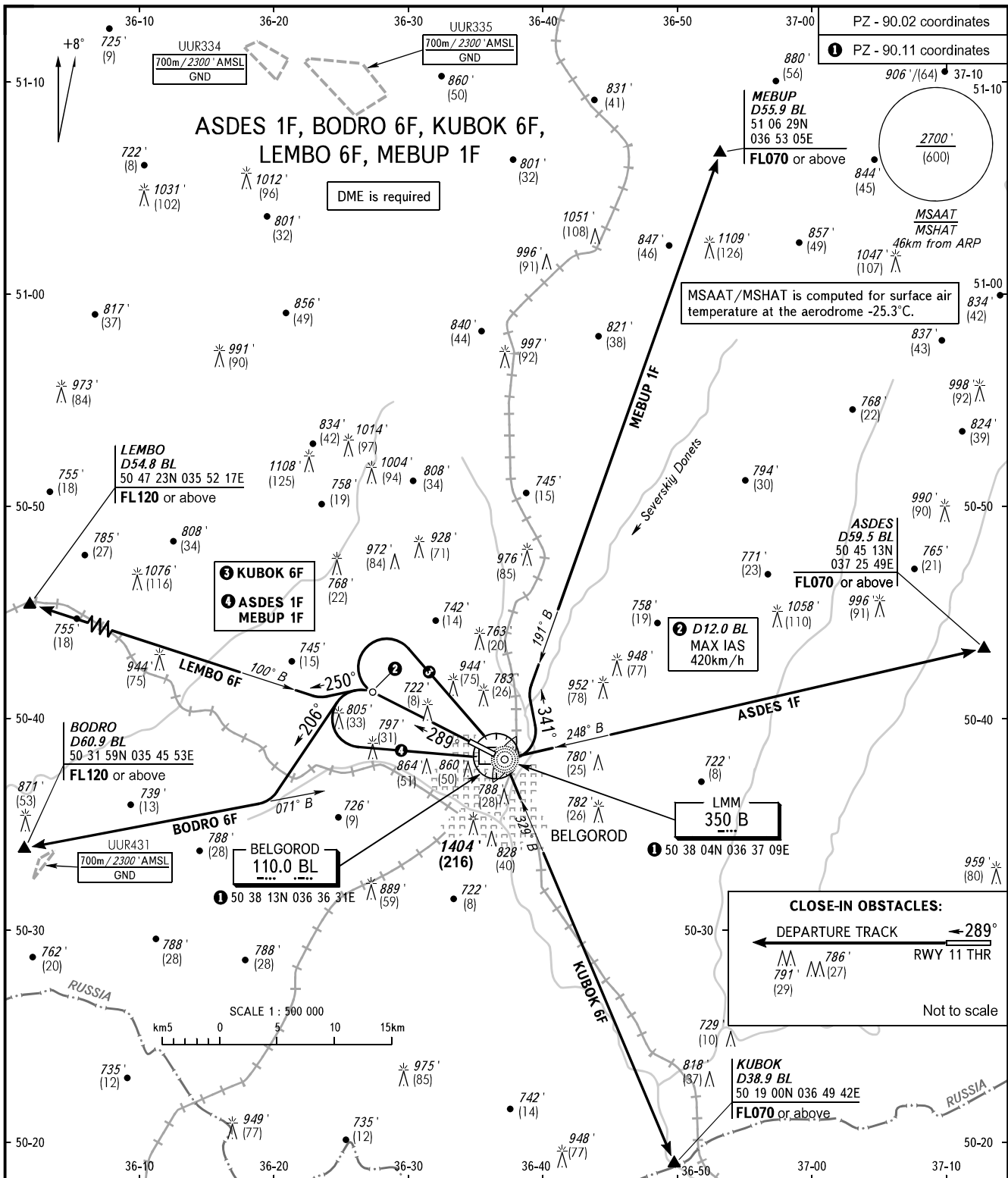


STANDARD DEPARTURE CHART  
INSTRUMENT (SID) - ICAO

BELGOROD, RUSSIA  
BELGOROD  
RWY 29

TRANSITION ALT : 5000'  
TRANSITION HGT : (1300)



**CLOSE-IN OBSTACLES:**  
DEPARTURE TRACK ← 289°  
RWY 11 THR  
791' (29) 786' (27)  
Not to scale

<p>TOWER <b>118.200</b></p>	<p>Minimum climb gradient due to the airspace structure: - 6.6% up to FL120 for LEMBO 6F; - 5.5% up to FL120 for BODRO 6F.</p>
<p>BEARINGS AND TRACKS ARE MAGNETIC ALTITUDES AND ELEVATIONS IN FEET HEIGHTS IN METRES DISTANCES IN KILOMETRES</p>	<p>Alt set: -QNH(QFE on req); -hPa(mm on req).</p>