

STANDARD DEPARTURE CHART

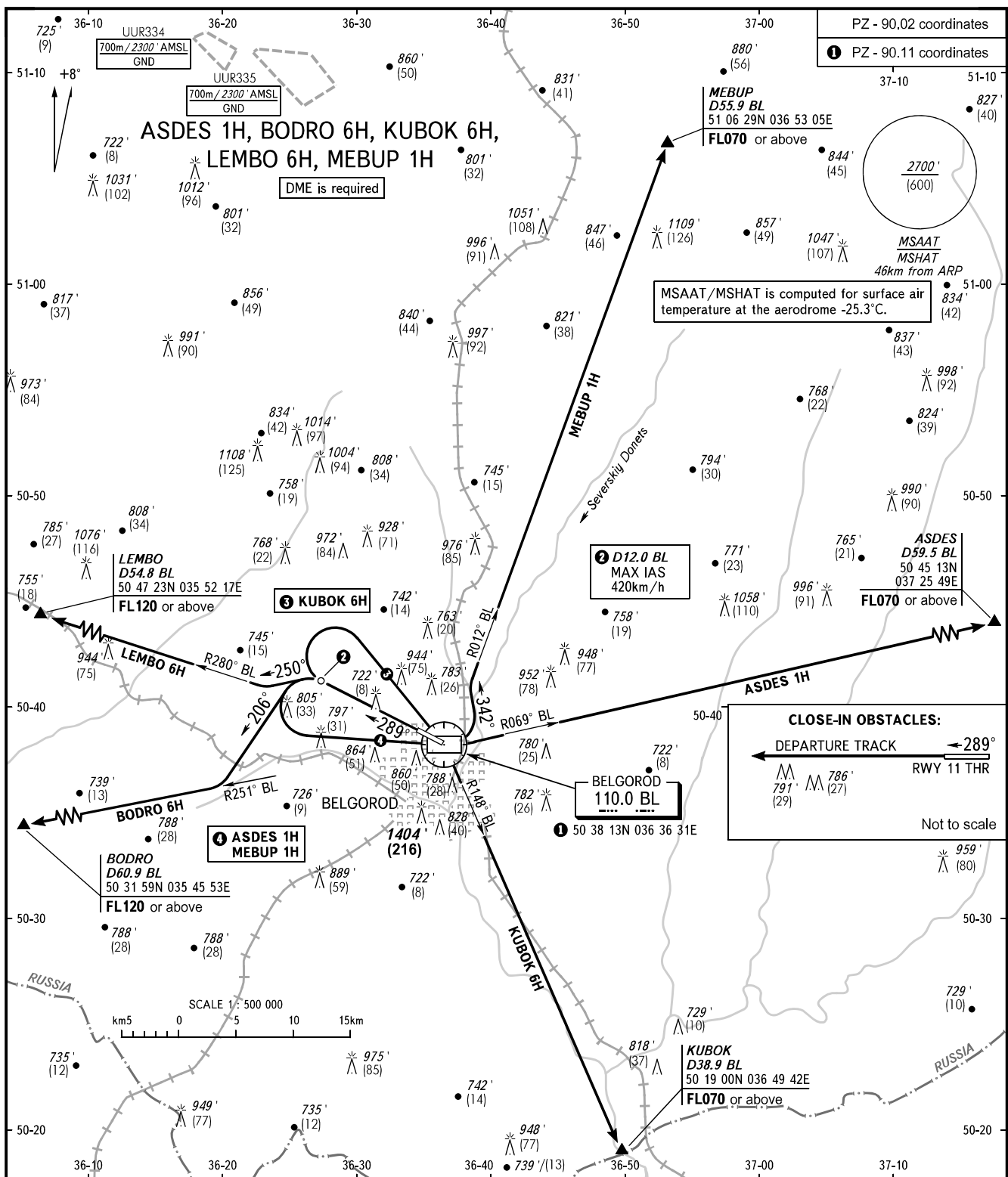
INSTRUMENT (SID) - ICAO

TRANSITION ALT : 5000 '
TRANSITION HGT : (1300)

BELGOROD, RUSSIA

BELGOROD

RWY 29



TOWER 118.200

Minimum climb gradient due to the airspace structure:

- 6.6% up to FL120 for LEMBO 6H;
- 5.5% up to FL120 for BODRO 6H.

BEARINGS AND TRACKS ARE MAGNETIC
ALTITUDES AND ELEVATIONS IN *FEET*
HEIGHTS IN METRES
DISTANCES IN KILOMETRES

Alt set: -QNH(QFE on req);
-hPa(mm on req).