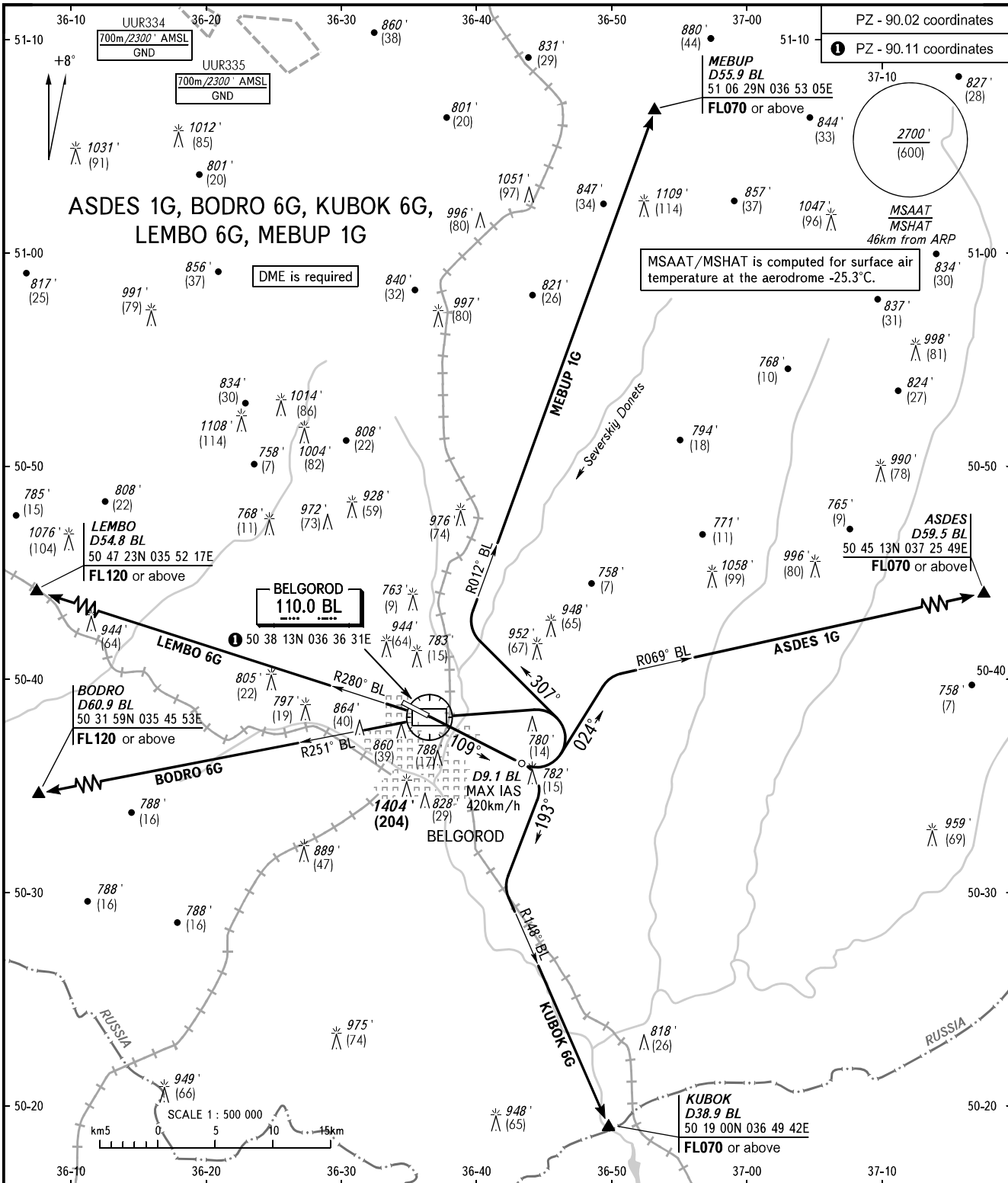


STANDARD DEPARTURE CHART
INSTRUMENT (SID) - ICAO

TRANSITION ALT : 5000'
TRANSITION HGT : (1300)

BELGOROD, RUSSIA
BELGOROD
RWY 11



PZ - 90.02 coordinates
① PZ - 90.11 coordinates

MSAAT/MSHAT is computed for surface air temperature at the aerodrome -25.3°C.

BELGOROD
110.0 BL

Minimum climb gradient due to the airspace structure:
- 4.6% up to FL070 for KUBOK 6G.

TOWER 118.200

BEARINGS AND TRACKS ARE MAGNETIC
ALTITUDES AND ELEVATIONS IN FEET
HEIGHTS IN METRES
DISTANCES IN KILOMETRES

Alt set: -QNH(QFE on req);
-hPa(mm on req).

CHANGE: Transition HGT, MSAAT/MSHAT