

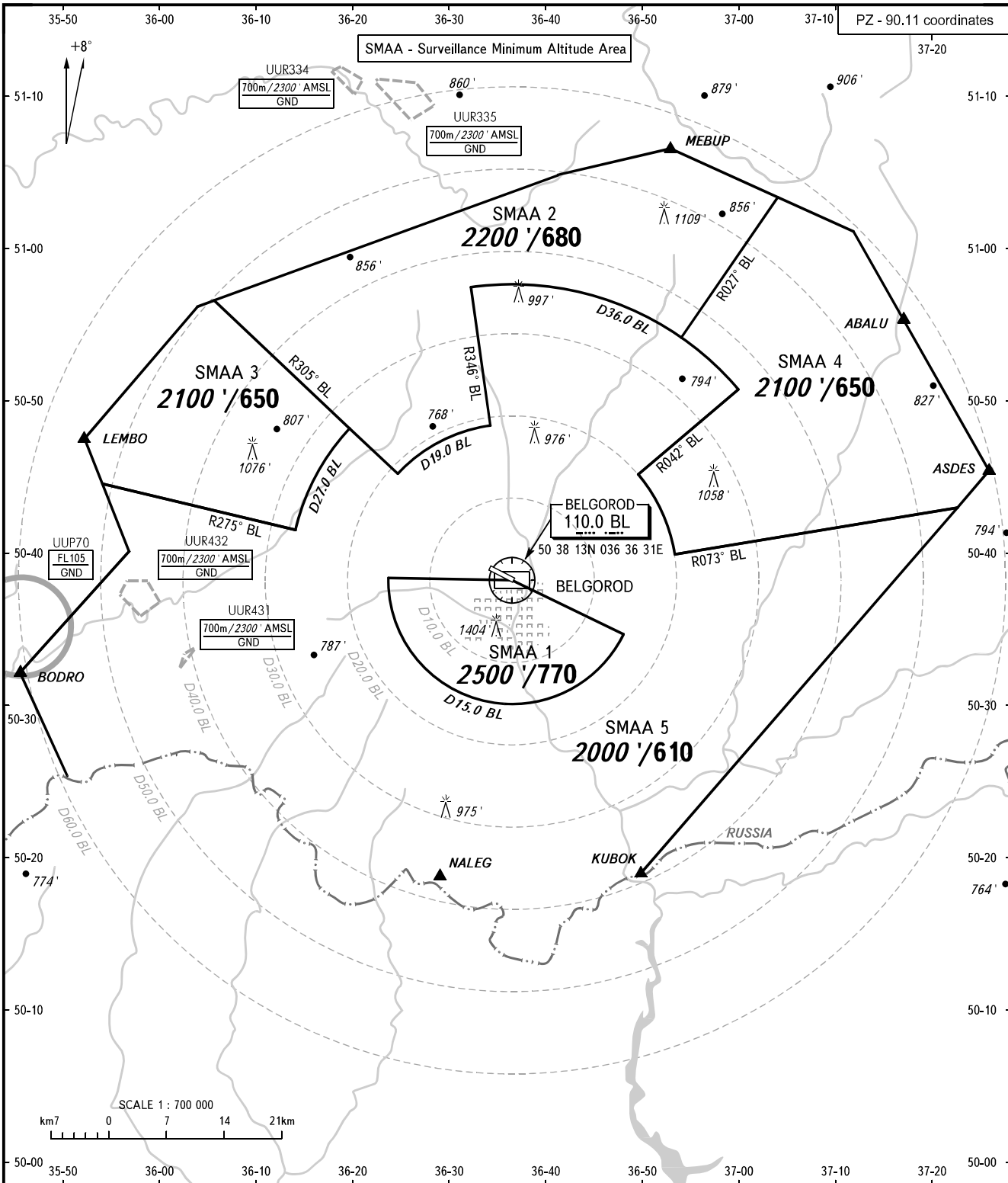
ATC SURVEILLANCE MINIMUM
ALTITUDE CHART - ICAO

ELEV
735'/224m

TRANSITION ALT: 5000'
TRANSITION HGT: (1300)

BELGOROD, RUSSIA

BELGOROD



TOWER 118.200

COMMUNICATION FAILURE:
In accordance with the procedures described in AIP.

WARNING:

1. The chart may only be used for cross-checking of altitudes assigned while the aircraft is under radar control.
2. When vectoring is executed at low temperature, minimum vectoring altitudes must be corrected using altimeter temperature correction by ATC unit.

BEARINGS AND TRACKS ARE MAGNETIC
ALTITUDES IN FEET AND METRES
ELEVATIONS IN FEET AND METRES
DISTANCES IN KILOMETRES

Alt set: -QNH(QFE on req);
-hPa(mm on req).

BELGOROD, RUSSIA
BELGOROD

SURVEILLANCE MINIMUM ALTITUDE AREAS

| IDENT | MNM ALT ft/m | LATERAL LIMITS (PZ-90.11 coordinates) |
|--------|--------------------|---|
| SMAA 1 | 2500 770 | 503821N 0362346E - 503813N 0363631E - 503440N 0364759E, then clockwise by arc of a circle radius of 15 KM centred at DVORDME BL (503812.8N 0363630.7E) to 503821N 0362346E. |
| SMAA 2 | 2200 680 | 505630N 0360536E - 510448E 0364118E - 510630N 0365300E - 510316N 0370410E - 505406N 0365404E, then anticlockwise by arc of a circle radius of 36 KM centred at DVORDME BL (503812.8N 0363630.7E) to 505726N 0363215E - 504821N 0363416E, then anticlockwise by arc of a circle radius of 19 KM centred at DVORDME BL (503812.8N 0363630.7E) to 504512N 0362442E - 505630N 0360536E. |
| SMAA 3 | 2100 650 | 504425N 0355411E - 504723N 0355217E - 505605N 0360351E - 505630N 0360536E - 504808N 0361944E, then anticlockwise by arc of a circle radius of 27 KM centred at DVORDME BL (503812.8N 0363630.7E) to 504129N 0361409E - 504425N 0355411E. |
| SMAA 4 | 2100 650 | 510316N 0370410E - 510100N 0371200E - 504513N 0372549E - 504249N 0372231E - 503954N 0365320E, then anticlockwise by arc of a circle radius of 20 KM centred at DVORDME BL (503812.8N 0363630.7E) to 504509N 0364933E - 505041N 0365956E, then anticlockwise by arc of a circle radius of 36 KM centred at DVORDME BL (503812.8N 0363630.7E) to 505406N 0365404E - 510316N 0370410E. |
| SMAA 5 | 2000 610 | 502543N 0355030E - 503159N 0354553E - 504000N 0355700E - 504425N 0355411E - 504129N 0361409E, then clockwise by arc of a circle radius of 27 KM centred at DVORDME BL (503812.8N 0363630.7E) to 504808N 0361944E - 504512N 0362442E, then clockwise by arc of a circle radius of 19 KM centred at DVORDME BL (503812.8N 0363630.7E) to 504821N 0363416E - 505726N 0363215E, then clockwise by arc of a circle radius of 36 KM centred at DVORDME BL (503812.8N 0363630.7E) to 505041N 0365956E - 504509N 0364933E, then clockwise by arc of a circle radius of 30 KM centred at DVORDME BL (503812.8N 0363630.7E) to 503954N 0365320E - 504249N 0372231E - 501900N 0364942E, then along the state border to 502543N 0355030E. |