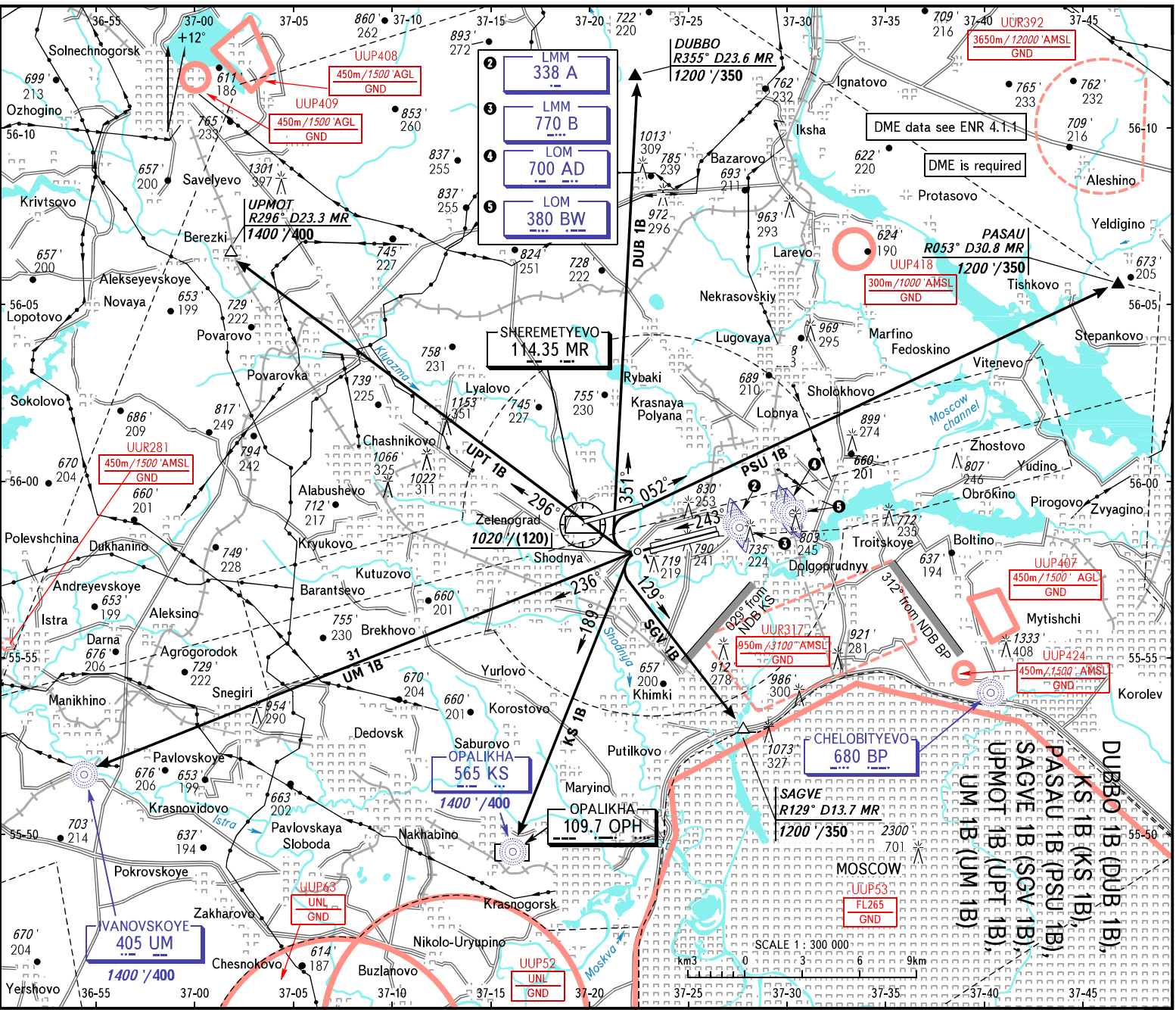


TRANSITION
ALTITUDE: 10000



SHERMETYEVO TOWER 118.700
SHEREMETYEVO RADAR 118.100
VNUKOVO TOWER 122.300
DOMODEDOVO TOWER 127.300

118.700 120.700 131.500 119.300

WARNING
MAX IAS for ACFT executing VFR flights shall not exceed 450km/h below FL100.
① Lateral and vertical limits see UJEE AD 2.18.

BEARINGS AND TRACKS ARE MAGNETIC
ALTITUDES, ELEVATIONS, IN FEET AND METRES
DISTANCES IN KILOMETRES

Alt set: -QNH(QFE on req);
-h(Paltm on req).

Federal Air Transport Agency

CHANGE: New chart