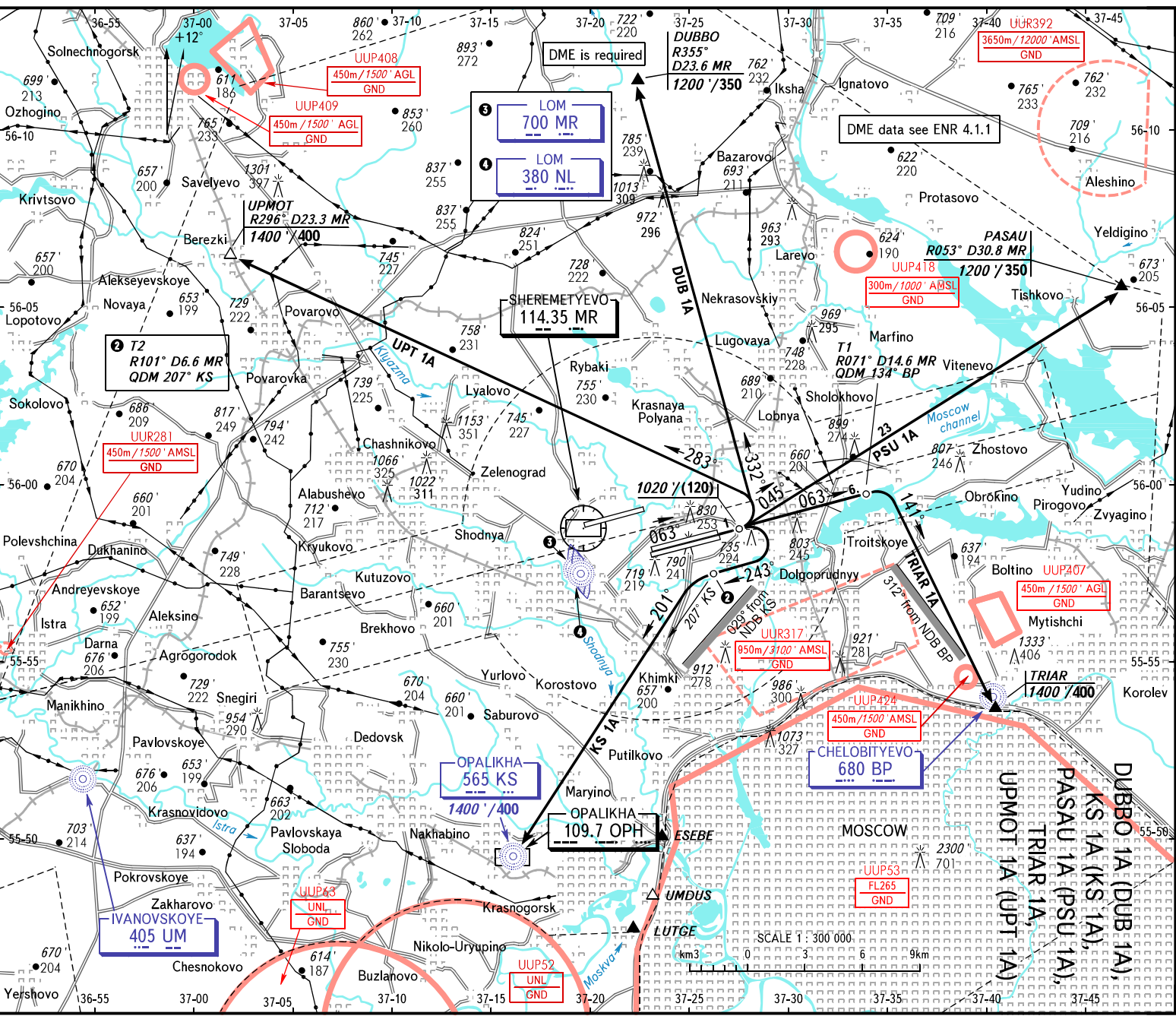


AIP  
RUSSIA  
VFR  
DEPARTURE  
CHART

AD 2.1 UUEE-203  
22 FEB 24

MOSCOW, RUSSIA  
SHEREMETYEVO  
RWY 06C, 06R

TRANSITION  
ALTITUDE: 10000'



BEARINGS AND TRACKS ARE MAGNETIC  
ALTITUDES, ELEVATIONS IN FEET AND METRES  
DISTANCES IN KILOMETRES

Federal Air Transport Agency

SHEREMETYEVO TOWER  
SHEREMETYEVO RADAR  
VNUKOVO TOWER  
DOMODEDOVO TOWER

118.700 120.700 131.500 119.300

WARNING  
MAX IAS for ACFT executing VFR flights  
shall not exceed 450km/h below FL100.  
Lateral and vertical limits see UUEE AD 2.18.

All set: -QNH(QFE on req):  
-HPa(hmm on req).

AIRAC AMDT 02/24