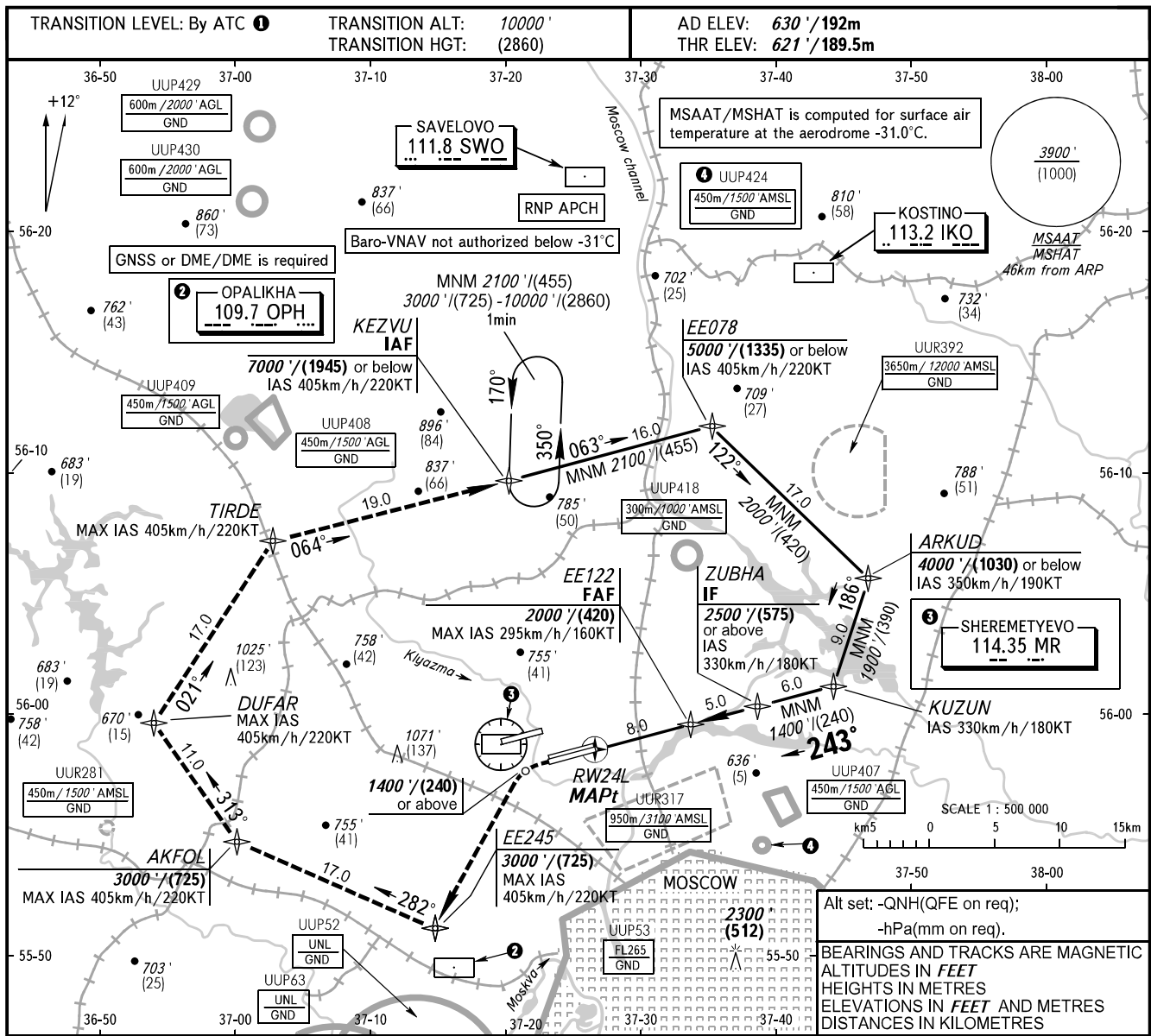


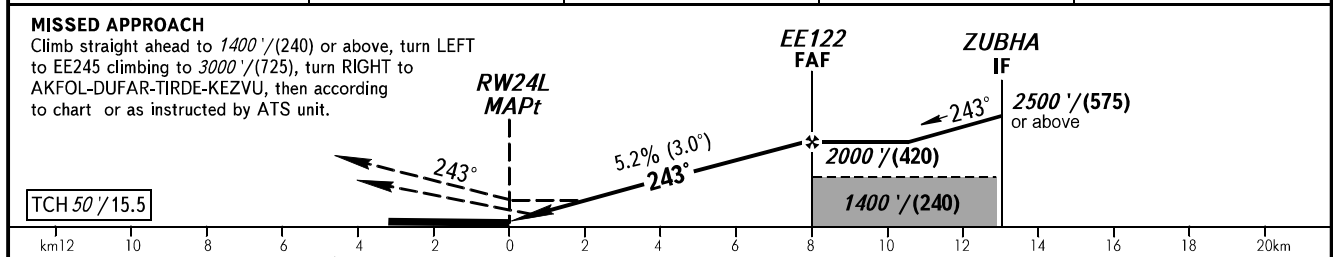
**INSTRUMENT
APPROACH
CHART - ICAO**

SHEREMETYEVO RADAR 118.100 120.675 122.700 126.600 135.175
SHEREMETYEVO TOWER 118.700 120.700 131.500

**MOSCOW, RUSSIA
SHEREMETYEVO
RNP RWY 24L**



DIST to RW24L	2.0	4.0	6.0	8.0
ALTITUDE/HEIGHT	1010'/(120)	1350'/(225)	1700'/(330)	2000'/(420)



OCA(H)		A	B	C	D	① TRANSITION LEVEL:														
Straight-in Approach	MNM climb gradient for missed APCH	1060' (440') (135)	1060' (440') (135)	1060' (440') (135)	1060' (440') (135)	- FL110 when QNH is 1013 hPa (760mm mercury column) or above;														
	LNAV/VNAV	950' (330') (105)	960' (340') (105)	980' (360') (110)	1000' (380') (120)	- FL120 when QNH is 977 hPa (733mm mercury column) or above, but less than 1013 hPa (760mm mercury column);														
GROUND SPEED		km/h	150	180	210	240	270	300	330	360	390	420	450							
RATE OF DESCENT		m/s	2.2	2.6	3.0	3.5	3.9	4.3	4.8	5.2	5.6	6.1	6.5							
		ft/min	427	512	597	683	768	853	939	1024	1109	1195	1280							