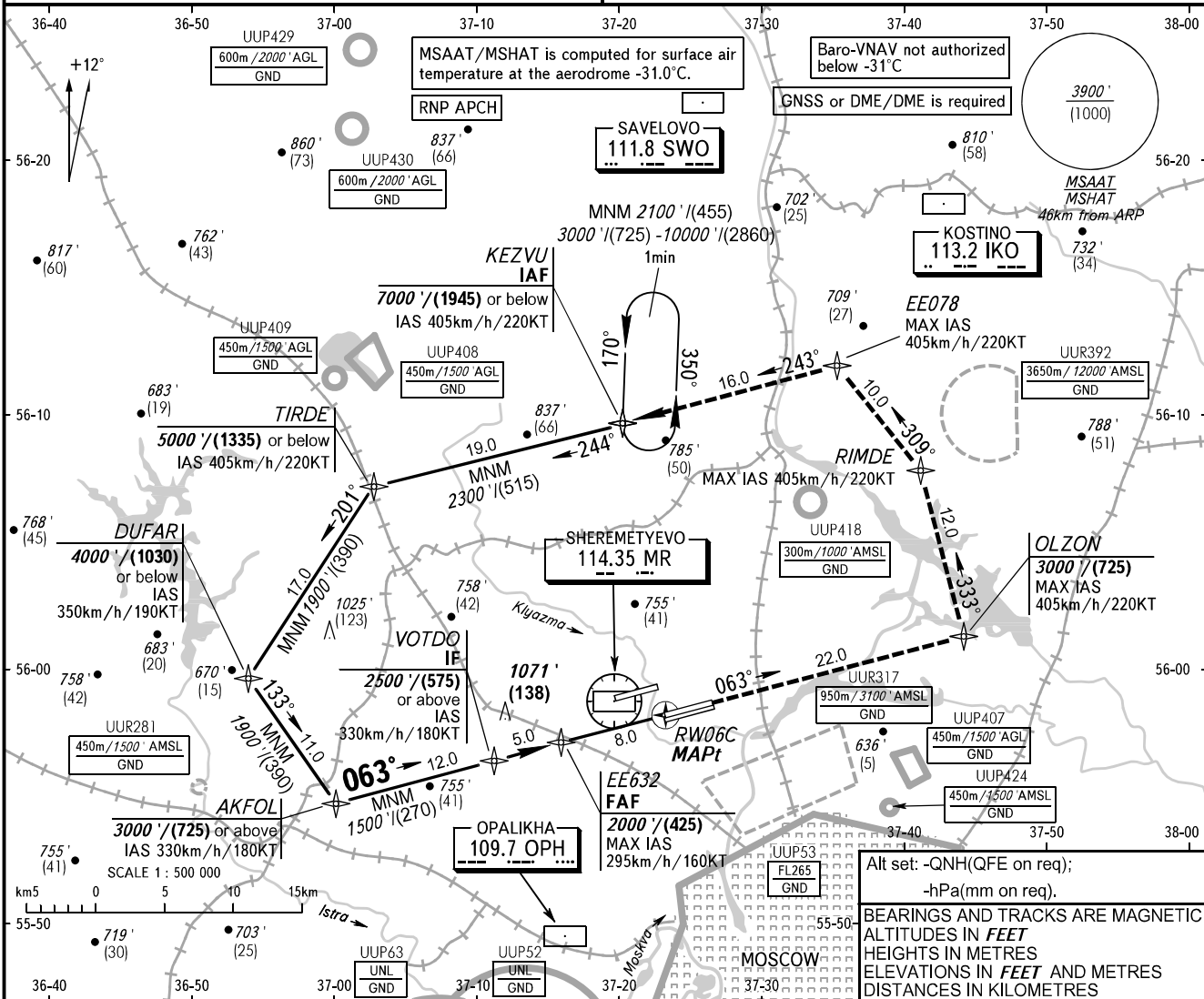


**INSTRUMENT
APPROACH
CHART - ICAO**

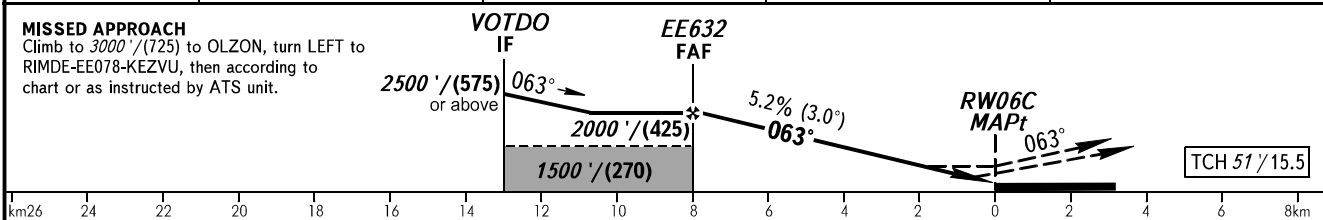
**MOSCOW, RUSSIA
SHEREMETYEVO
RNP RWY 06C**

SHEREMETYEVO RADAR 118.100 120.675 122.700 126.600 135.175
SHEREMETYEVO TOWER 118.700 120.700 131.500

TRANSITION LEVEL: By ATC 1 TRANSITION ALT: 10000' AD ELEV: 630' / 192m
TRANSITION HGT: (2860) THR ELEV: 620' / 189.0m



DIST to RW06C	8.0	6.0	4.0	2.0
ALTITUDE/HEIGHT	2000' / (425)	1690' / (325)	1350' / (225)	1010' / (120)



OCA(H)		A	B	C	D	1 TRANSITION LEVEL: - FL110 when QNH is 1013 hPa (760mm mercury column) or above; - FL120 when QNH is 977 hPa (733mm mercury column) or above, but less than 1013 hPa (760mm mercury column); - FL130 when QNH is less than 977 hPa (733mm mercury column).
Straight-in Approach	MNM climb gradient for missed APCH	1140' (520') (160)	1140' (520') (160)	1140' (520') (160)	1140' (520') (160)	
	LNAV	880' (260') (80)	890' (270') (85)	900' (280') (90)	930' (310') (95)	

GROUND SPEED	km/h	150	180	210	240	270	300	330	360	390	420	450
RATE OF DESCENT	m/s	2.2	2.6	3.1	3.5	3.9	4.3	4.8	5.2	5.6	6.1	6.5
	ft/min	427	512	597	683	768	853	939	1024	1109	1195	1280