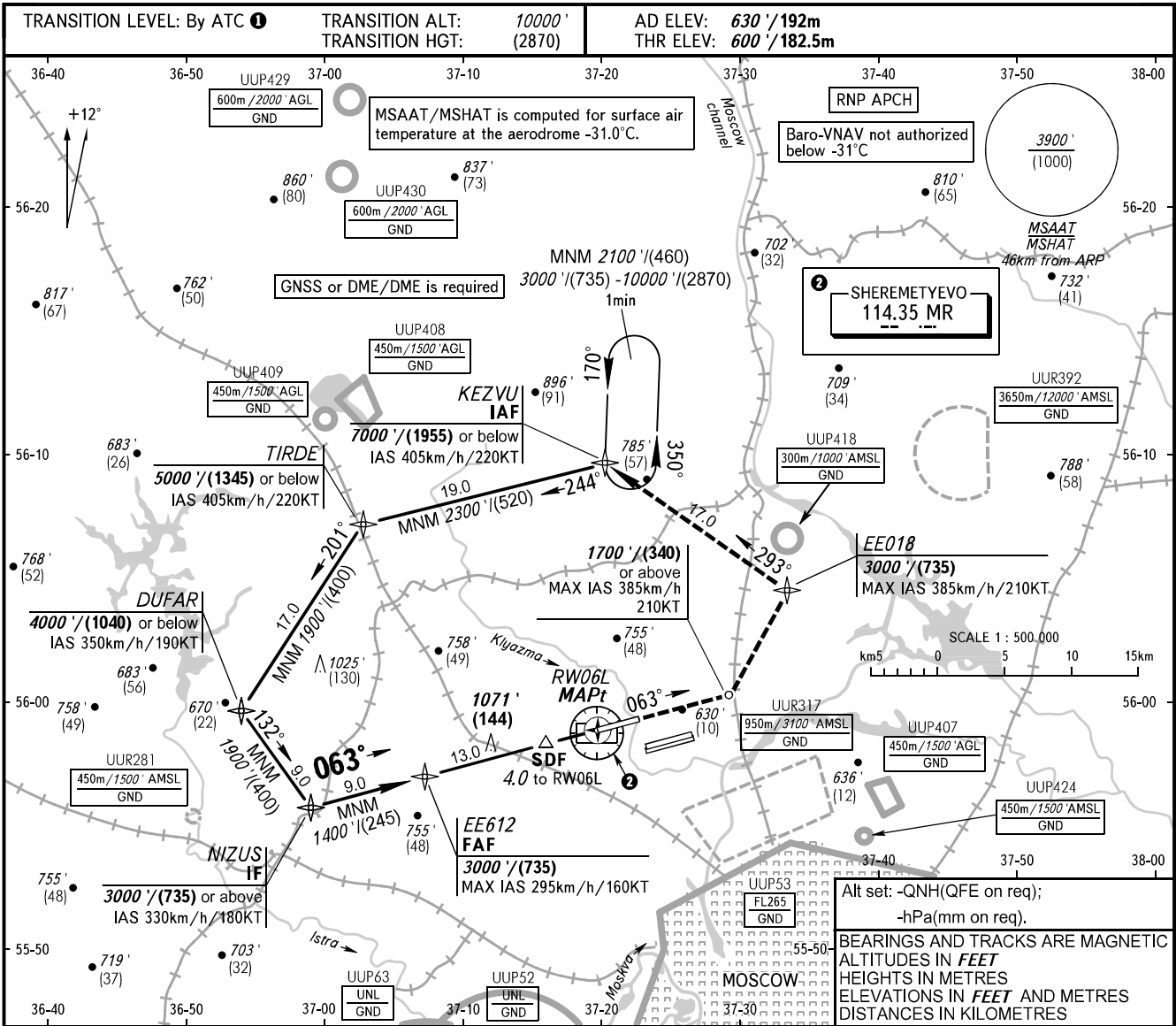


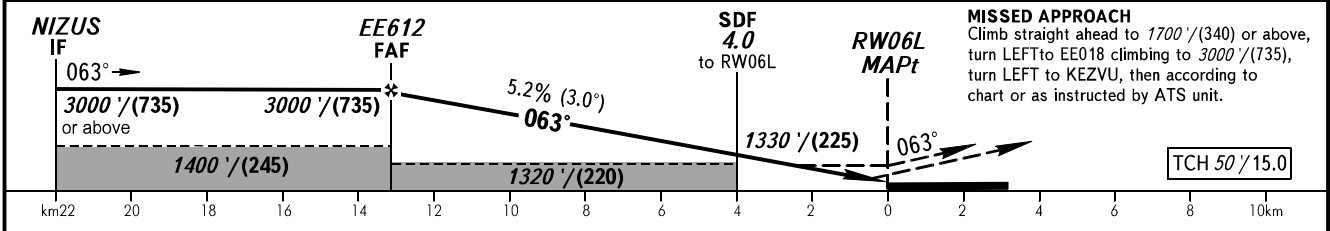
**INSTRUMENT  
APPROACH  
CHART - ICAO**

**MOSCOW, RUSSIA  
SHEREMETYEVO  
RNP RWY 06L**

SHEREMETYEVO RADAR 118.100 120.675 122.700 126.600 135.175  
SHEREMETYEVO TOWER 118.700 120.700 131.500



DIST to RW06L	13.6	12.0	10.0	8.0	6.0	4.0	2.0
ALTITUDE/HEIGHT	3000'/(735)	2700'/(640)	2360'/(540)	2020'/(435)	1680'/(330)	1330'/(225)	1000'/(125)



OCA(H)		A	B	C	D								
Straight-in	MNM climb gradient for missed APCH	1060' (470') (145)	1060' (470') (145)	1060' (470') (145)	1060' (470') (145)								
	LNAV	990' (400') (125)	1000' (410') (125)	1020' (430') (135)	1040' (450') (140)								
Approach	LNAV/VNAV												
GROUND SPEED		km/h	150	180	210	240	270	300	330	360	390	420	450
RATE OF DESCENT		m/s	2.2	2.6	3.0	3.5	3.9	4.3	4.8	5.2	5.6	6.1	6.5
		ft/min	427	512	597	683	768	853	939	1024	1109	1195	1280

**TRANSITION LEVEL:**  
 - FL110 when QNH is 1013 hPa (760mm mercury column) or above;  
 - FL120 when QNH is 977 hPa (733mm mercury column) or above, but less than 1013 hPa (760mm mercury column);  
 - FL130 when QNH is less than 977 hPa (733mm mercury column).

CHANGE: New chart