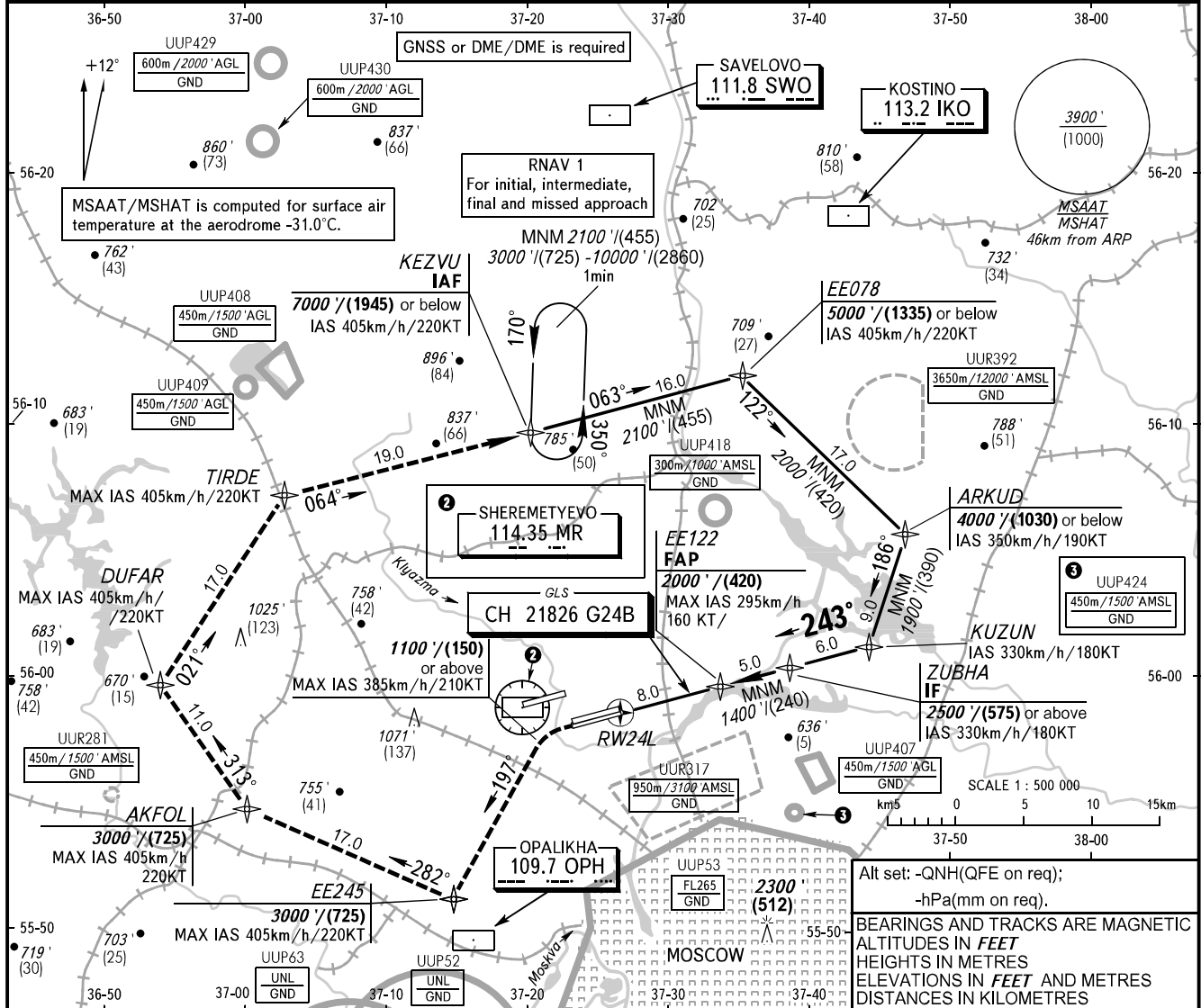


**INSTRUMENT  
APPROACH  
CHART - ICAO**

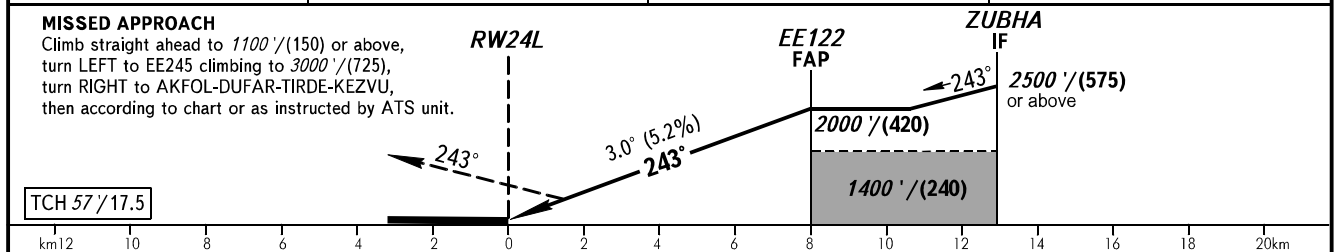
SHEREMETYEVO RADAR 118.100 120.675 122.700 126.600 135.175  
SHEREMETYEVO TOWER 118.700 120.700 131.500

**MOSCOW, RUSSIA  
SHEREMETYEVO  
GLS RWY 24L**

**GBAS** CH 21826 G24B      **TRANSITION LEVEL:** By ATC ①      **TRANSITION ALT:** 10000'      **AD ELEV:** 630' / 192m  
**THR ELEV:** 621' / 189.5m



DIST to RW24L	2.0	4.0	6.0
ALTITUDE/HEIGHT	1020' / (120)	1370' / (230)	1710' / (335)



OCA(H)		A	B	C	D	① TRANSITION LEVEL:										
Straight-in Approach	MNM climb gradient for missed APCH	CAT I	759' (138') (43)	767' (146') (45)	779' (158') (49)	793' (172') (53)	- FL 110 when QNH is 1013 hPa (760mm mercury column) or above; - FL 120 when QNH is 977 hPa (733mm mercury column) or above, but less than 1013 hPa (760mm mercury column); - FL 130 when QNH is less than 977 hPa (733mm mercury column).									
			GROUND SPEED	km/h	150	180	210	240	270	300	330	360	390	420	450	
RATE OF DESCENT			m/s	2.2	2.6	3.1	3.5	3.9	4.3	4.8	5.2	5.6	6.1	6.5		
			ft/min	427	512	597	683	768	853	939	1024	1109	1195	1280		