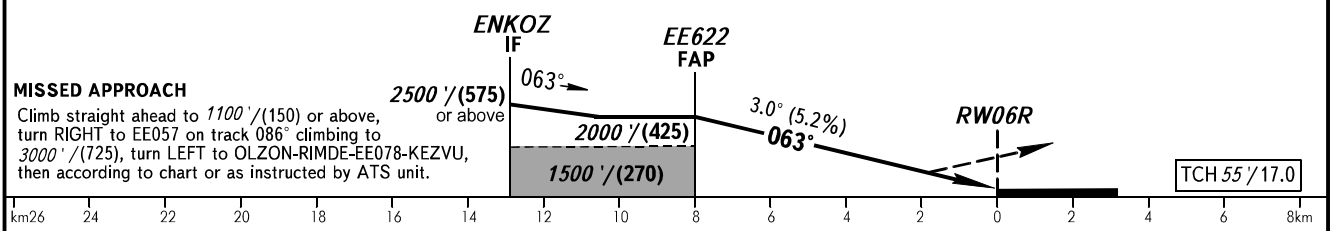
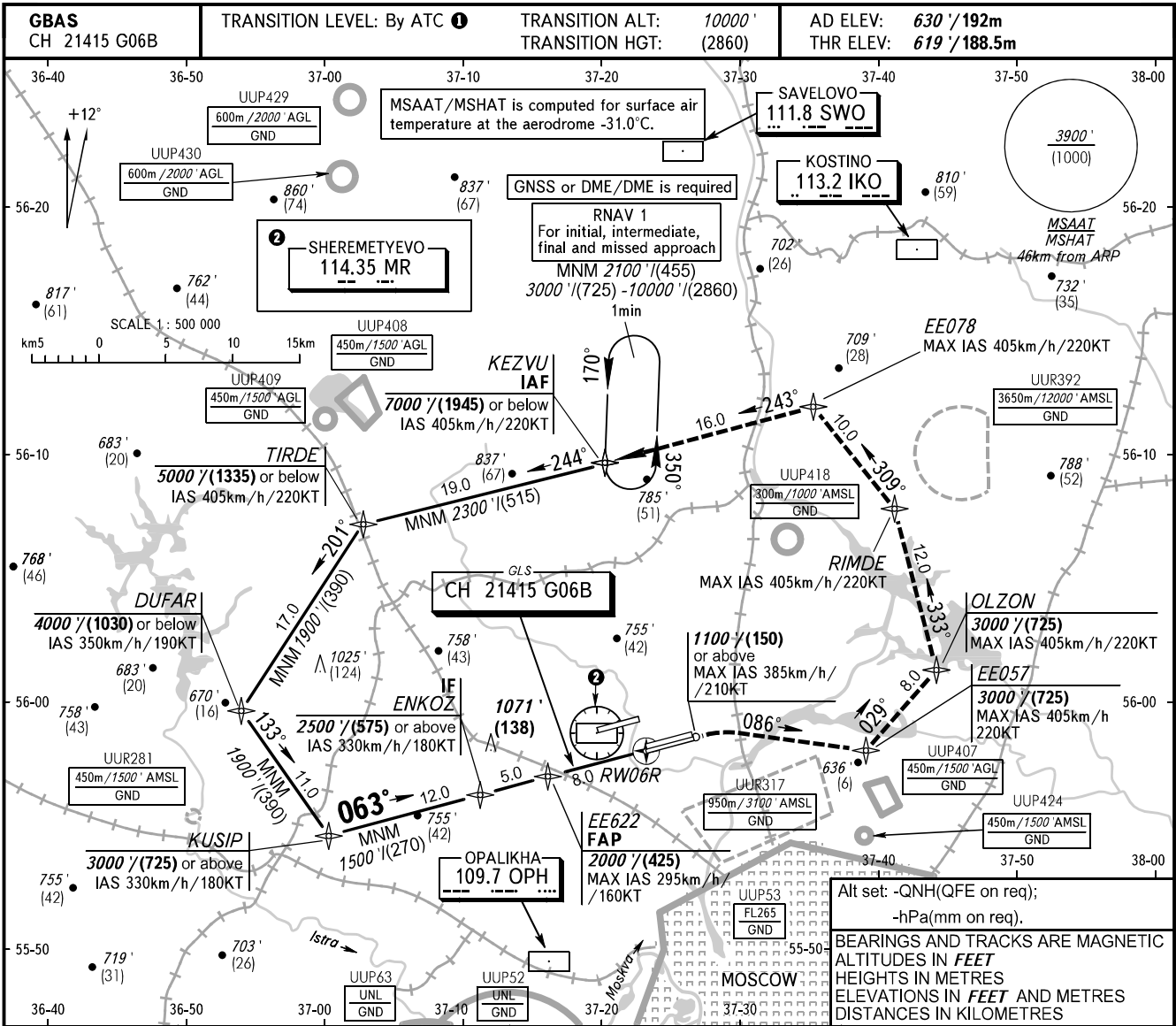


**INSTRUMENT
APPROACH
CHART - ICAO**

**MOSCOW, RUSSIA
SHEREMETYEVO
GLS RWY 06R**

SHEREMETYEVO RADAR 118.100 120.675 122.700 126.600 135.175
SHEREMETYEVO TOWER 118.700 120.700 131.500



OCA(H)		A	B	C	D	1 TRANSITION LEVEL: - FL110 when QNH is 1013 hPa (760mm mercury column) or above; - FL120 when QNH is 977 hPa (733mm mercury column) or above, but less than 1013 hPa (760mm mercury column); - FL130 when QNH is less than 977 hPa (733mm mercury column).														
Straight-in	MNM climb gradient for missed APCH	CAT I																		
		761' (142') (44)	771' (152') (47)	782' (163') (50)	796' (177') (54)															
GROUND SPEED		km/h	150	180	210	240	270	300	330	360	390	420	450							
RATE OF DESCENT		m/s	2.2	2.6	3.0	3.5	3.9	4.3	4.8	5.2	5.6	6.1	6.5							
		ft/min	427	512	597	683	768	853	939	1024	1109	1195	1280							

CHANGE: New chart