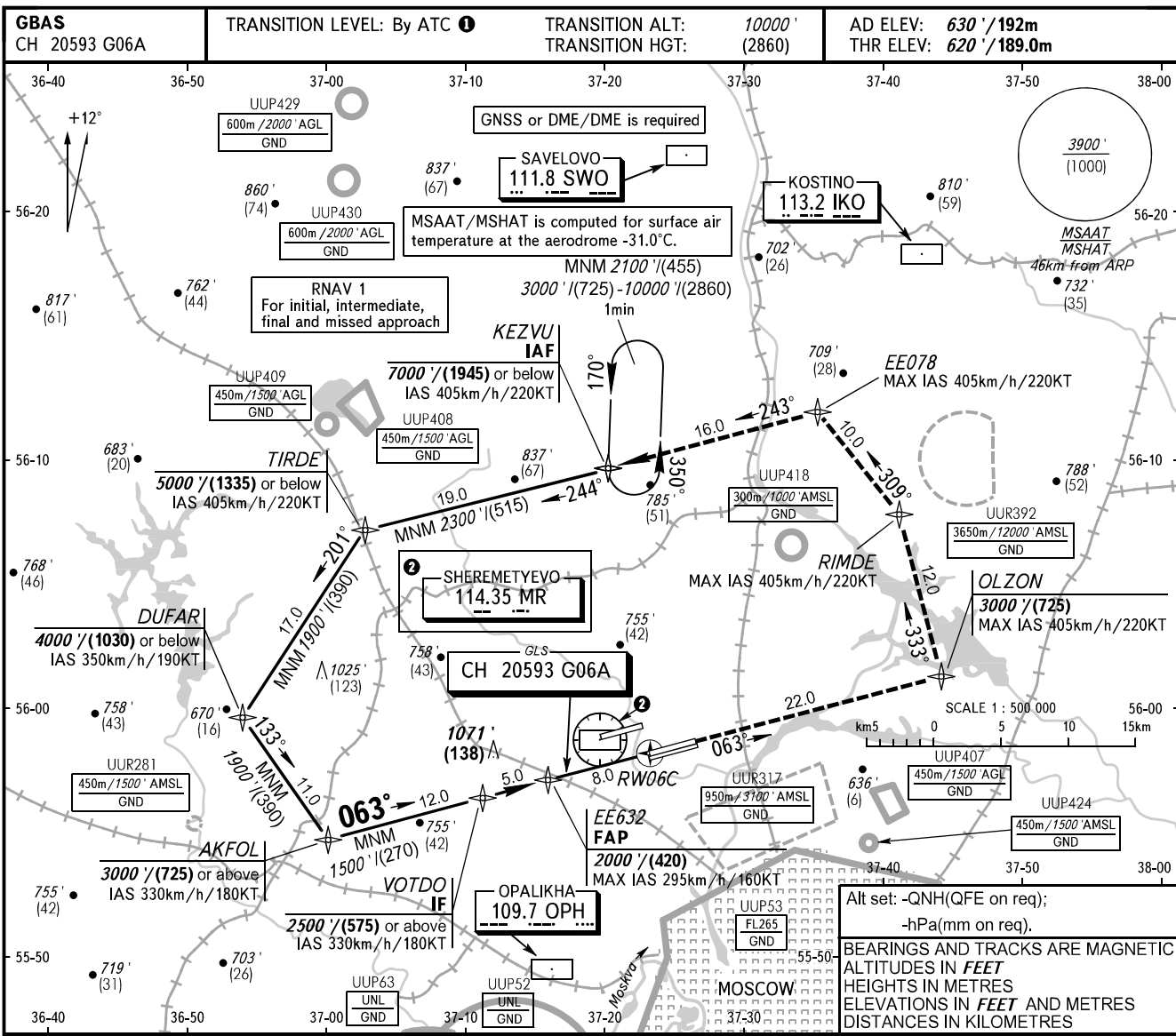


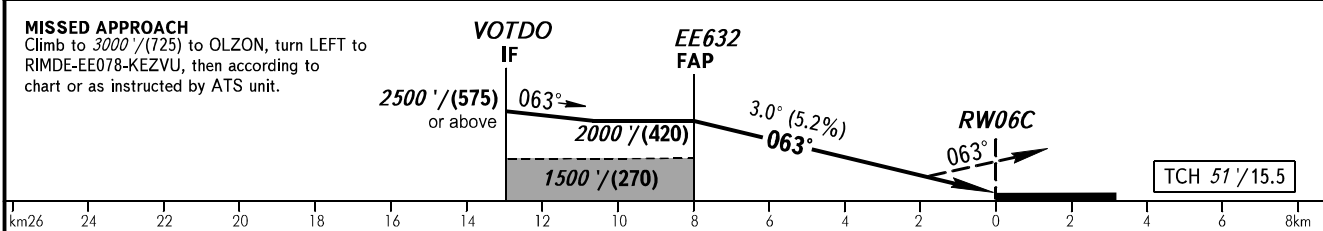
**INSTRUMENT
APPROACH
CHART - ICAO**

**MOSCOW, RUSSIA
SHEREMETYEVO
GLS RWY 06C**

SHEREMETYEVO RADAR 118.100 120.675 122.700 126.600 135.175
SHEREMETYEVO TOWER 118.700 120.700 131.500



DIST to RW06C	6.0	4.0	2.0
ALTITUDE/HEIGHT	1710'/(335)	1360'/(225)	1020'/(125)



OCA(H)		A	B	C	D	① TRANSITION LEVEL:							
Straight-in	MNM climb gradient for missed APCH	CAT I	820' (200') (60)	820' (200') (60)	820' (200') (60)	820' (200') (60)	- FL110 when QNH is 1013 hPa (760mm mercury column) or above;						
			- FL120 when QNH is 977 hPa (733mm mercury column) or above, but less than 1013 hPa (760mm mercury column);										
Approach		- FL130 when QNH is less than 977 hPa (733mm mercury column).											
GROUND SPEED		km/h	150	180	210	240	270	300	330	360	390	420	450
RATE OF DESCENT		m/s	2.2	2.6	3.1	3.5	3.9	4.3	4.8	5.2	5.6	6.1	6.5
		ft/min	427	512	597	683	768	853	939	1024	1109	1195	1280

CHANGE: New chart