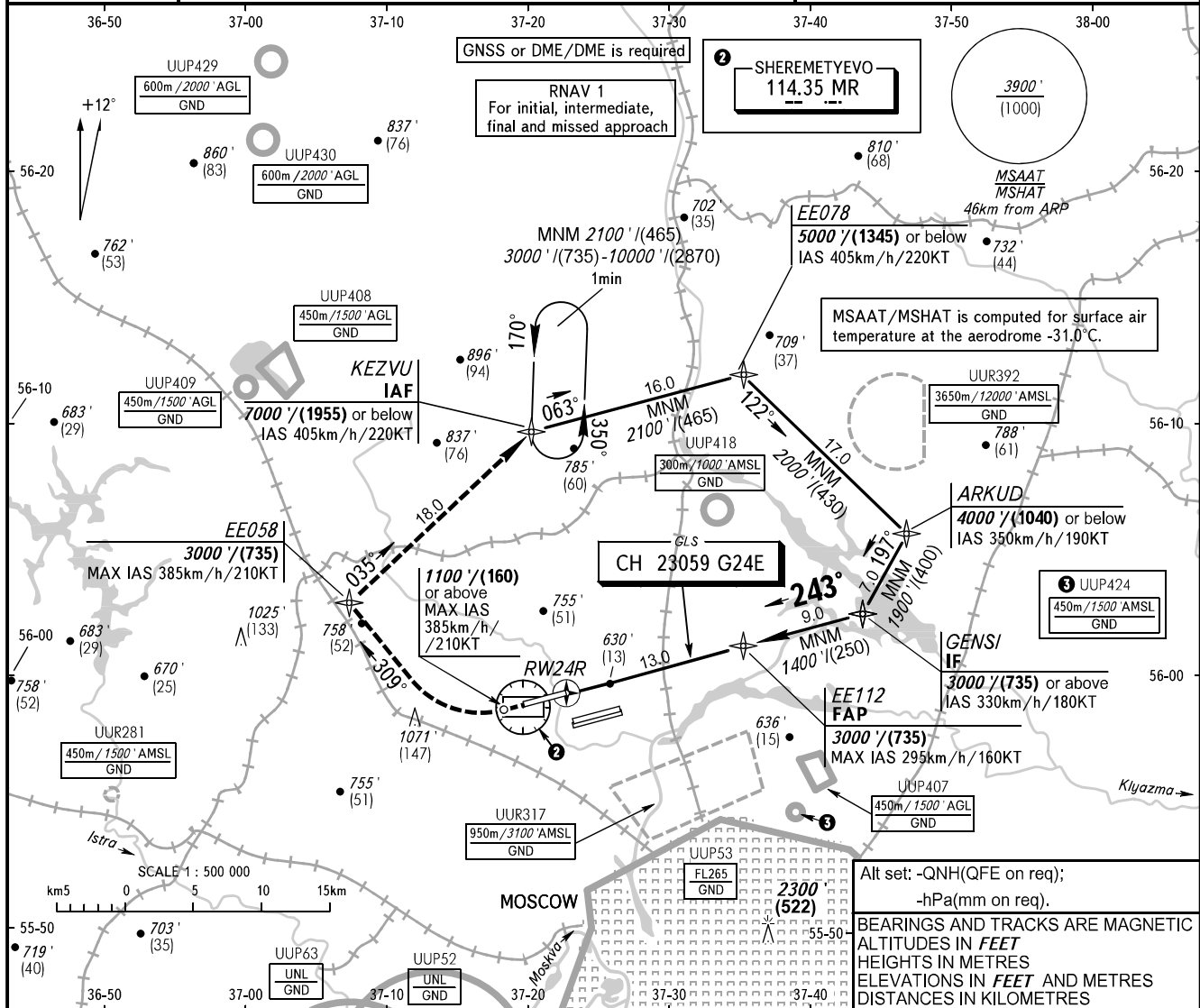


**INSTRUMENT
APPROACH
CHART - ICAO**

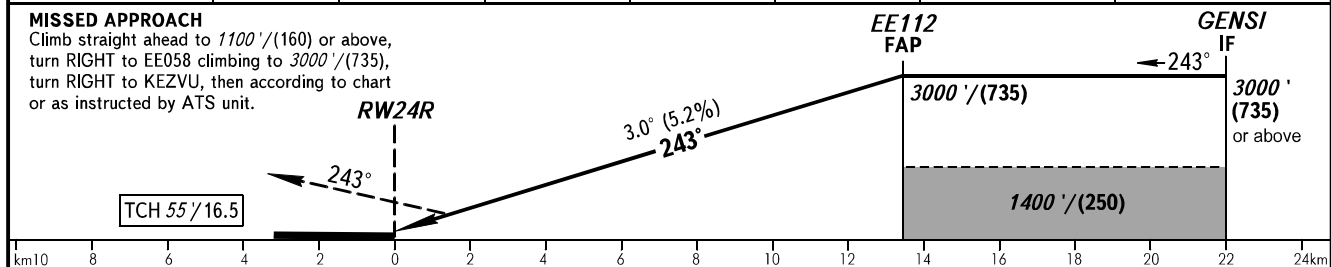
SHEREMETYEVO RADAR 118.100 120.675 122.700 126.600 135.175
SHEREMETYEVO TOWER 118.700 120.700 131.500

**MOSCOW, RUSSIA
SHEREMETYEVO
GLS RWY 24R**

GBAS CH 23059 G24E **TRANSITION LEVEL:** By ATC ① **TRANSITION ALT:** 10000' **AD ELEV:** 630' / 192m
TRANSITION HGT: (2870) **THR ELEV:** 589' / 179.5m



| | | | | | | | |
|-----------------|------------|-------------|-------------|-------------|-------------|-------------|-------------|
| DIST to RW24R | 2.0 | 4.0 | 6.0 | 8.0 | 10.0 | 12.0 | 13.4 |
| ALTITUDE/HEIGHT | 980' (120) | 1330' (230) | 1670' (330) | 2020' (435) | 2350' (535) | 2690' (640) | 3000' (735) |



| | | | | | | | | | | | | | |
|-------------------------|--|--------|---------------------|---------------------|---------------------|---------------------|---|---|-----|------|------|------|------|
| OCA(H) | | A | B | C | D | ① TRANSITION LEVEL: | | | | | | | |
| Straight-in Approach | MNM climb gradient for missed APCH | CAT I | 789' (200') (60) | 789' (200') (60) | 789' (200') (60) | 789' (200') (60) | - FL110 when QNH is 1013 hPa (760mm mercury column) or above; | | | | | | |
| | | | | | | | | - FL120 when QNH is 977 hPa (733mm mercury column) or above, but less than 1013 hPa (760mm mercury column); | | | | | |
| GROUND SPEED | | km/h | 150 | 180 | 210 | 240 | 270 | 300 | 330 | 360 | 390 | 420 | 450 |
| RATE OF DESCENT | | m/s | 2.2 | 2.6 | 3.0 | 3.5 | 3.9 | 4.3 | 4.8 | 5.2 | 5.6 | 6.1 | 6.5 |
| | | ft/min | 427 | 512 | 597 | 682 | 768 | 853 | 938 | 1024 | 1109 | 1195 | 1280 |