

SHEREMETYEVO TOWER	118.700	120.700	131.500	119.300
SHEREMETYEVO RADAR	118.100	120.675	122.700	126.600
MOSCOW APPROACH	127.200	128.000	134.000	131.200

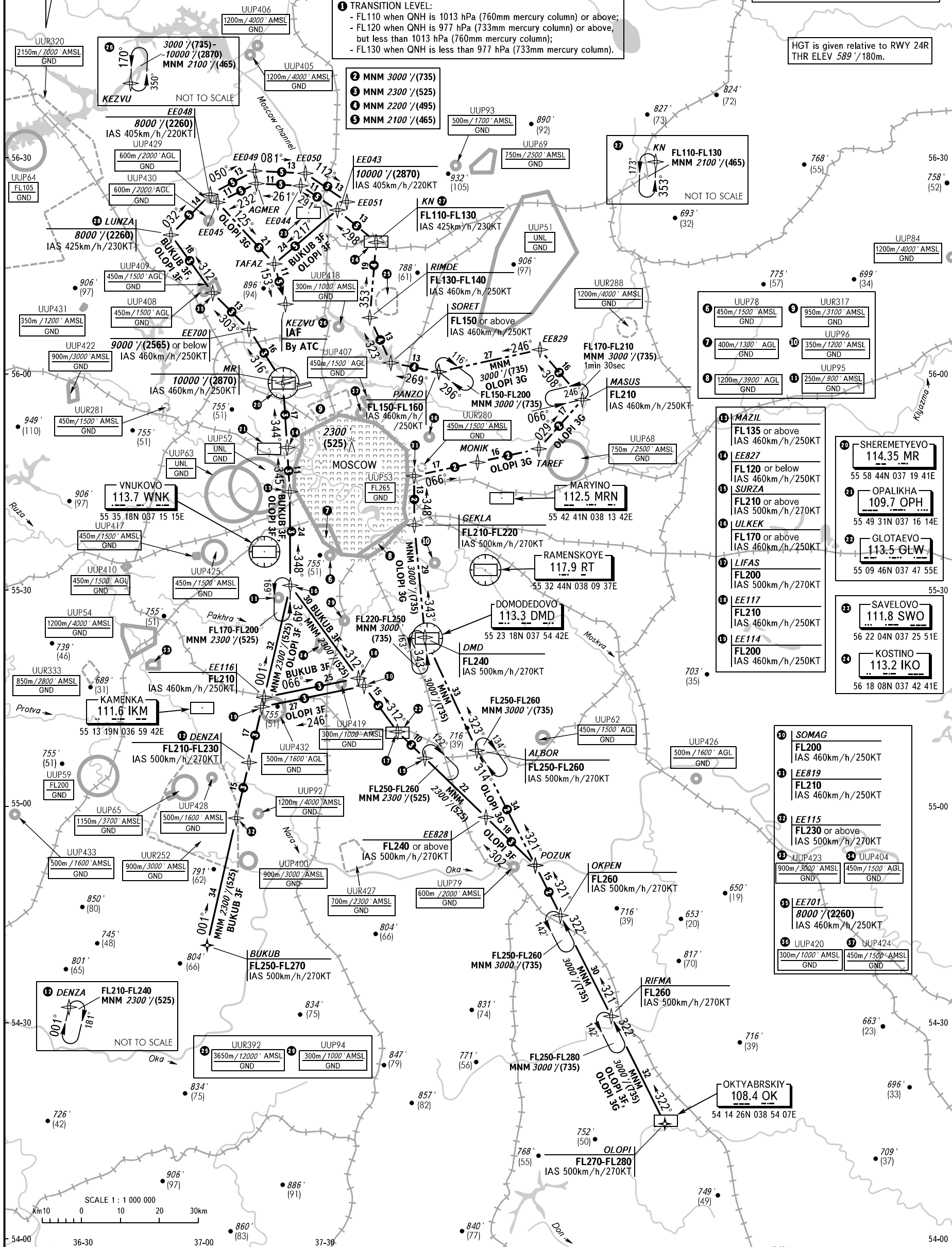
BUKUB 3F, OLOPI 3F, OLOPI 3G (By ATC)

PZ - 90,11 coordinates

MSAAT
MSHAT
46km from ARP

MSAAT/MSHAT is computed for surface air temperature at the aerodrome -31°C.

HGT is given relative to RWY 24R
THR ELEV 589'/180m.



1 TRANSITION LEVEL:
- FL110 when QNH is 1013 hPa (760mm mercury column) or above;
- FL120 when QNH is 977 hPa (733mm mercury column);
- FL130 when QNH is less than 977 hPa (733mm mercury column).

- 2** MNM 3000'/(735)
- 3** MNM 2300'/(525)
- 4** MNM 2200'/(495)
- 5** MNM 2100'/(465)

13 MAZIL FL 135 or above IAS 460km/h/250KT	20 SHEREMETYEVO 114.35 MR 55 58 44N 037 19 41E
14 EE827 FL 120 or below IAS 460km/h/250KT	21 OPALIKHA 109.7 OPH 55 49 31N 037 16 14E
15 SURZA FL 210 or above IAS 500km/h/270KT	22 GLOTAEVO 113.5 GLW 55 09 46N 037 47 55E
16 ULKEK FL 170 or above IAS 460km/h/250KT	23 SAVELOVO 111.8 SWO 56 22 04N 037 25 51E
17 LIFAS FL 200 IAS 500km/h/270KT	24 KOSTINO 113.2 IKO 56 18 08N 037 42 41E
18 EE117 FL 210 IAS 460km/h/250KT	
19 EE114 FL 200 IAS 460km/h/250KT	

30 SOMAG FL 200 IAS 460km/h/250KT	34 UUP404 450m/1500' AMSL GND
31 EE819 FL 210 IAS 460km/h/250KT	35 EE701 8000'/(2260) IAS 460km/h/250KT
32 EE115 FL 230 or above IAS 500km/h/270KT	36 UUP420 300m/1000' AMSL GND
33 UUP423 900m/3000' AMSL GND	37 UUP424 450m/1500' AMSL GND

BEARINGS AND TRACKS ARE MAGNETIC
ALTITUDES IN FEET
HEIGHTS IN METRES
ELEVATIONS IN FEET AND METRES
DISTANCES IN KILOMETRES

Alt set: -QNH(QFE on req);
-hPa(mm on req).