

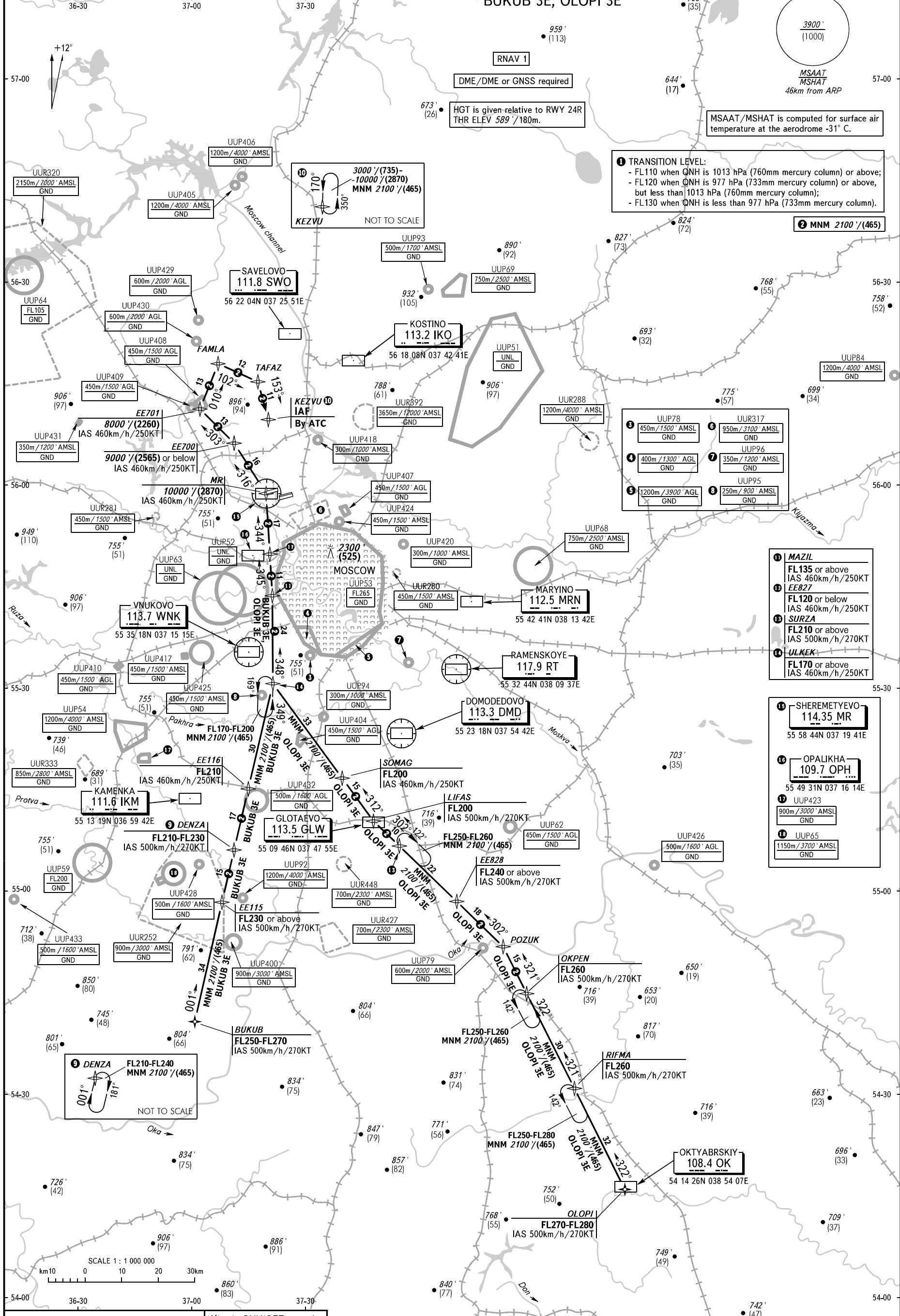
SHEREMETYEVO TOWER	118.700	120.700	131.500	119.300
SHEREMETYEVO RADAR	118.100	120.675	122.700	126.600
MOSCOW APPROACH	127.200	128.000	134.000	131.200

BUKUB 3E, OLOPI 3E

AIP
RUSSIA
STANDARD ARRIVAL CHART
INSTRUMENT (STAR) - ICAO

TRANSITION
LEVEL: By ATC ①

MOSCOW, RUSSIA
SHEREMETYEVO
RNAV RMY 06L, 06C, 06R, 24R, 24C, 24L



① TRANSITION LEVEL:
- FL110 when QNH is 1013 hPa (760mm mercury column) or above;
- FL120 when QNH is 977 hPa (733mm mercury column) or above, but less than 1013 hPa (760mm mercury column);
- FL130 when QNH is less than 977 hPa (733mm mercury column).

- ① MAZIL
FL135 or above
IAS 460km/h/250KT
- ② EE827
FL120 or below
IAS 460km/h/250KT
- ③ SURZA
FL210 or above
IAS 500km/h/270KT
- ④ ULKEK
FL170 or above
IAS 460km/h/250KT

- ⑤ SHEREMETYEVO
114.35 MR
55 58 44N 037 19 41E
- ⑥ OPALIKHA
109.7 OPH
55 49 31N 037 16 14E
- ⑦ UUP423
900m/3000' AMSL
GND
- ⑧ UUP65
1150m/3700' AMSL
GND

BEARINGS AND TRACKS ARE MAGNETIC
ALTITUDES IN FEET
HEIGHTS IN METRES
ELEVATIONS IN FEET AND METRES
DISTANCES IN KILOMETRES

Alt set: -QNH(QFE on req);
-hPa(mm on req).