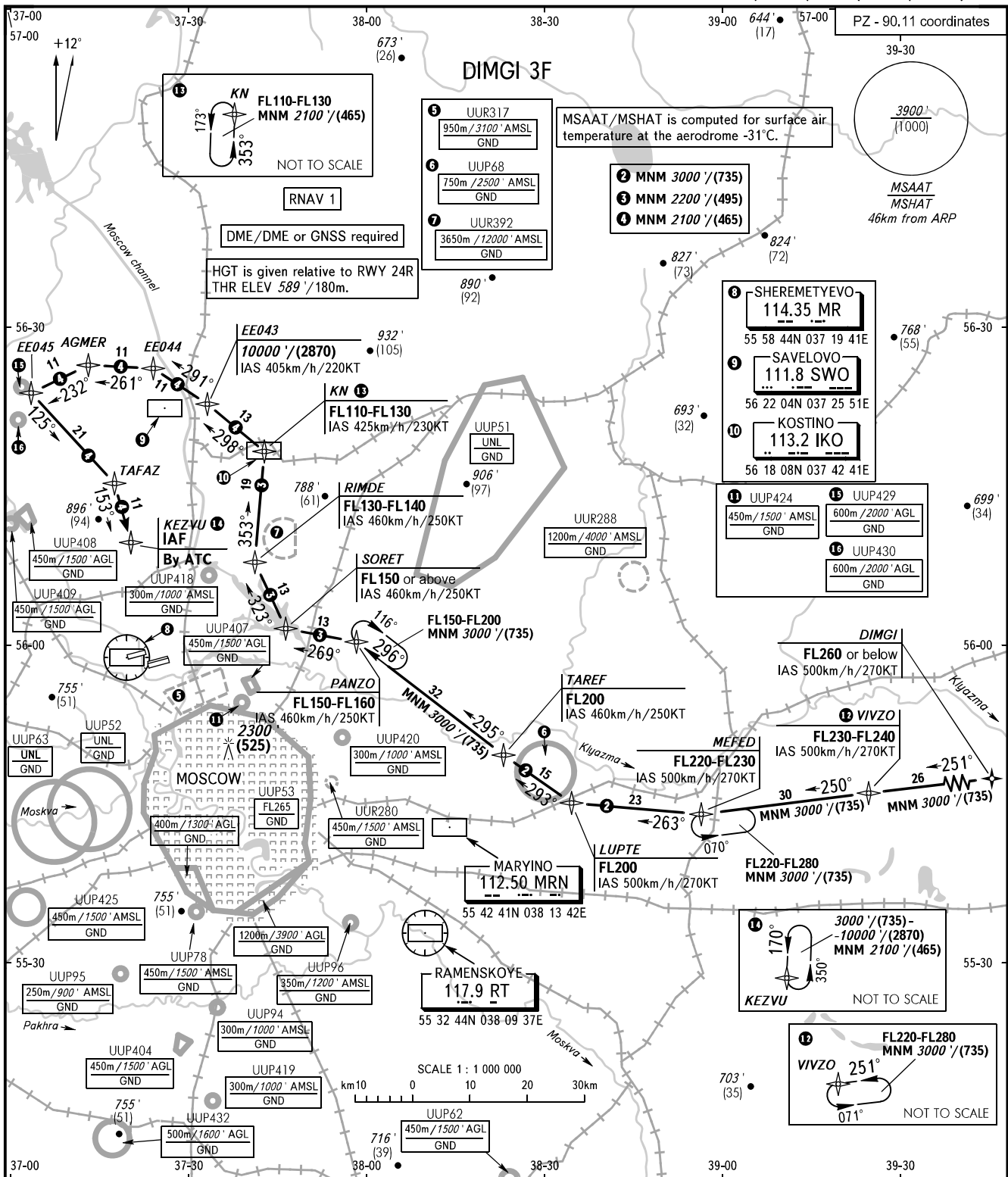


STANDARD ARRIVAL CHART  
INSTRUMENT (STAR) - ICAO

TRANSITION  
LEVEL: **By ATC ①**

MOSCOW, RUSSIA  
SHEREMETYEVO  
RNAV RWY 06L, 06C, 06R, 24R, 24C, 24L



SHERMETYEVO TOWER	118.700	120.700	131.500	119.300
SHERMETYEVO RADAR	118.100	120.675	122.700	126.600 135.175
MOSCOW APPROACH	127.200	128.000	134.000	131.200

- ① TRANSITION LEVEL:
- FL110 when QNH is 1013 hPa (760mm mercury column) or above;
  - FL120 when QNH is 977 hPa (733mm mercury column) or above, but less than 1013 hPa (760mm mercury column);
  - FL130 when QNH is less than 977 hPa (733mm mercury column).

BEARINGS AND TRACKS ARE MAGNETIC  
ALTITUDES IN FEET  
HEIGHTS IN METRES  
ELEVATIONS IN FEET AND METRES  
DISTANCES IN KILOMETRES

Alt set: -QNH(QFE on req);  
-hPa(mm on req).