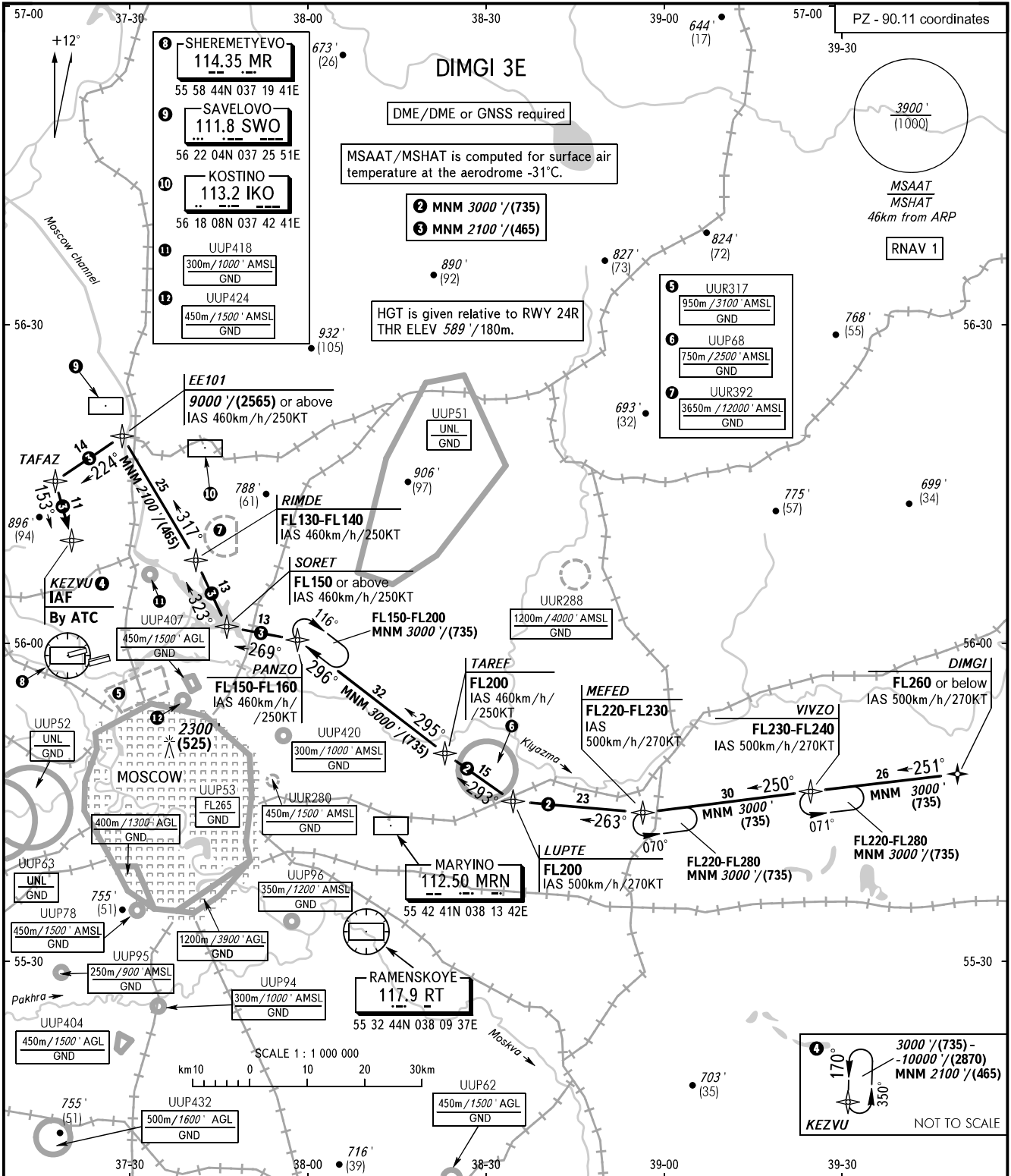


STANDARD ARRIVAL CHART
INSTRUMENT (STAR) - ICAO

MOSCOW, RUSSIA
SHEREMETYEVO

RNAV RWY 06L, 06C, 06R, 24R, 24C, 24L

TRANSITION
LEVEL: **By ATC** ①



SHEREMETYEVO TOWER	118.700	120.700	131.500	119.300
SHEREMETYEVO RADAR	118.100	120.675	122.700	126.600
MOSCOW APPROACH	127.200	128.000	134.000	131.200

- ① TRANSITION LEVEL:
- FL110 when QNH is 1013 hPa (760mm mercury column) or above;
 - FL120 when QNH is 977 hPa (733mm mercury column) or above, but less than 1013 hPa (760mm mercury column);
 - FL130 when QNH is less than 977 hPa (733mm mercury column).

BEARINGS AND TRACKS ARE MAGNETIC
ALTITUDES IN FEET
HEIGHTS IN METRES
ELEVATIONS IN FEET AND METRES
DISTANCES IN KILOMETRES

All set: -QNH(QFE on req);
-hPa(mm on req).

CHANGE: New chart