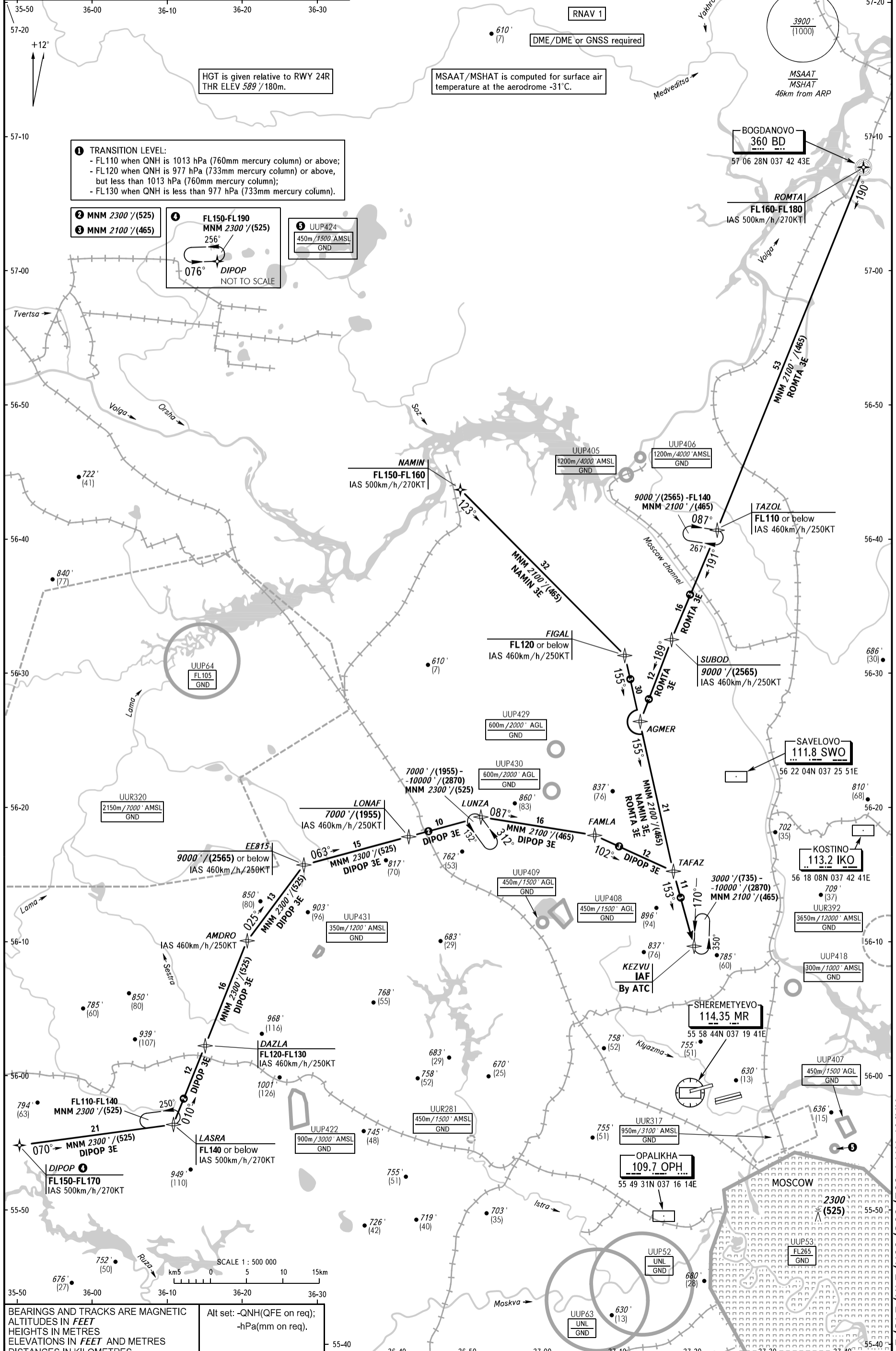


SHEREMETYEVO TOWER	118.700	120.700	131.500	119.300	
SHEREMETYEVO RADAR	118.100	120.675	122.700	126.600	135.175
MOSCOW APPROACH	127.200	128.000	134.000	131.200	

### DIPOP 3E, NAMIN 3E, ROMTA 3E



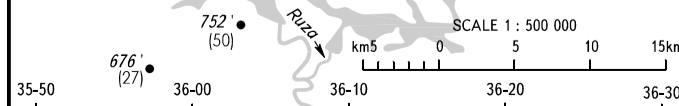
**1** TRANSITION LEVEL:  
 - FL110 when QNH is 1013 hPa (760mm mercury column) or above;  
 - FL120 when QNH is 977 hPa (733mm mercury column) or above, but less than 1013 hPa (760mm mercury column);  
 - FL130 when QNH is less than 977 hPa (733mm mercury column).

**2** MNM 2300'/(525)  
**3** MNM 2100'/(465)  
**4** FL150-FL190 MNM 2300'/(525) 256'  
**5** UUP424 450m/1500' AMSL GND



BEARINGS AND TRACKS ARE MAGNETIC  
 ALTITUDES IN FEET  
 HEIGHTS IN METRES  
 ELEVATIONS IN FEET AND METRES  
 DISTANCES IN KILOMETRES

Alt set: -QNH(QFE on req);  
 -hPa(mm on req).



SCALE 1 : 500 000

55-50 36-40 36-50 37-00 37-10 37-20 37-30 37-40

55-40 36-40 36-50 37-00 37-10 37-20 37-30 37-40

55-50 36-40 36-50 37-00 37-10 37-20 37-30 37-40