

TRANSITION ALT: 10000'
TRANSITION HGT: (2860)

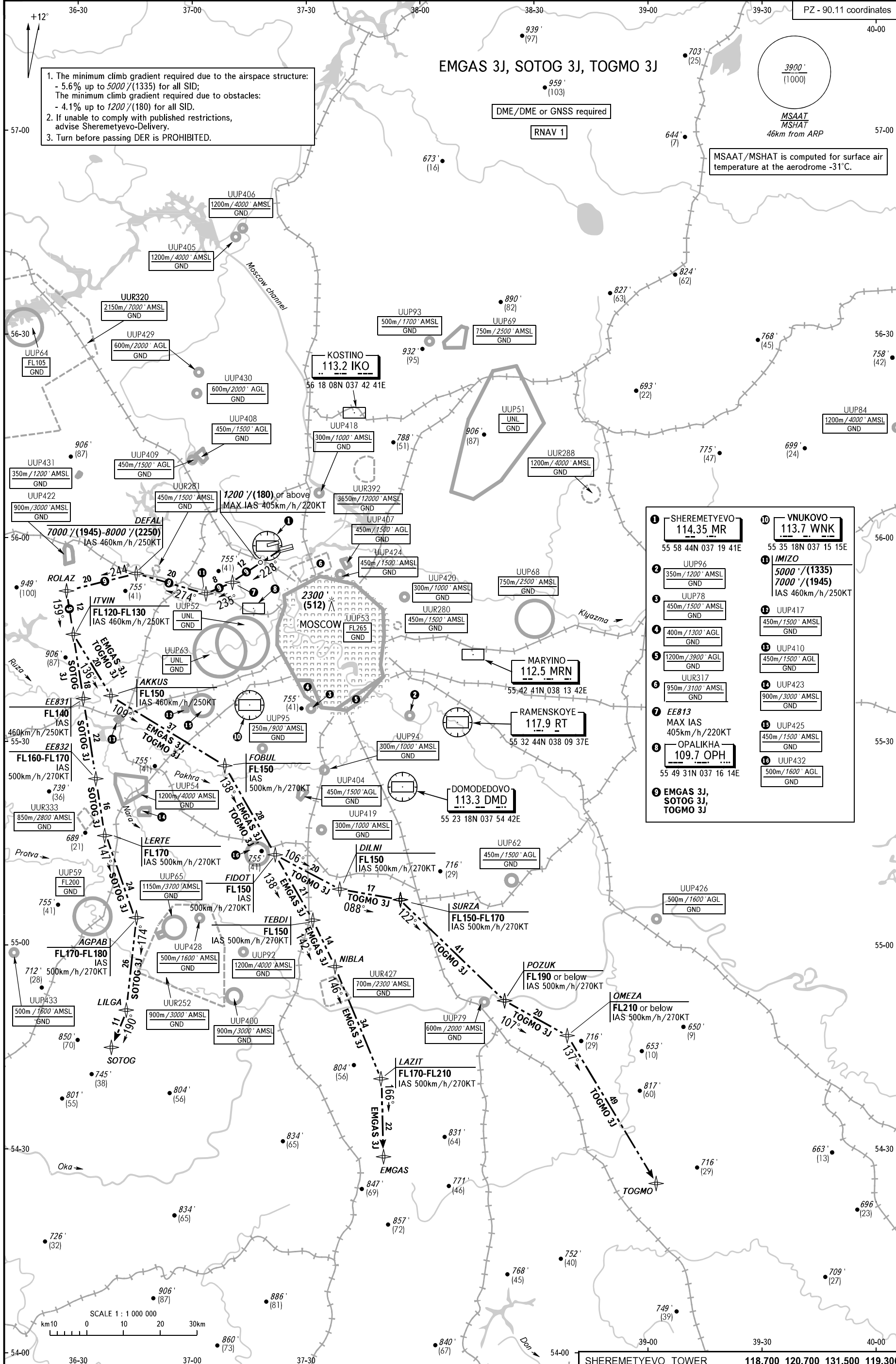
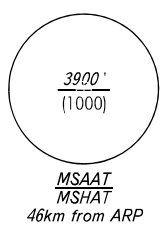
EMGAS 3J, SOTOG 3J, TOGMO 3J

- The minimum climb gradient required due to the airspace structure:
- 5.6% up to 5000'(1335) for all SID;
The minimum climb gradient required due to obstacles:
- 4.1% up to 1200'(180) for all SID.
- If unable to comply with published restrictions, advise Sheremetyevo-Delivery.
- Turn before passing DER is PROHIBITED.

DME/DME or GNSS required

RNAV 1

MSAAT/MSHAT is computed for surface air temperature at the aerodrome -31°C.



- | | |
|---|---|
| 1 SHEREMETYEVO
114.35 MR
55 58 44N 037 19 41E | 10 VNUKOVO
113.7 WNK
55 35 18N 037 15 15E |
| 2 UUP96
350m/1200' AMSL
GND | 11 IMIZO
5000'/(1335)
7000'/(1945)
IAS 460km/h/250KT |
| 3 UUP78
450m/1500' AMSL
GND | 12 UUP417
450m/1500' AMSL
GND |
| 4 400m/1300' AGL
GND | 13 UUP410
450m/1500' AGL
GND |
| 5 1200m/3900' AGL
GND | 14 UUP423
900m/3000' AMSL
GND |
| 6 UUR317
950m/3100' AMSL
GND | 15 UUP425
450m/1500' AMSL
GND |
| 7 EE813
MAX IAS
405km/h/220KT | 16 UUP432
500m/1600' AGL
GND |
| 8 OPALIKHA
109.7 OPH
55 49 31N 037 16 14E | |
| 9 EMGAS 3J,
SOTOG 3J,
TOGMO 3J | |

BEARINGS AND TRACKS ARE MAGNETIC
ALTITUDES IN FEET
HEIGHTS IN METRES
ELEVATIONS IN FEET AND METRES
DISTANCES IN KILOMETRES

Alt set: -QNH(QFE on req);
-hPa(mm on req).

SHEREMETYEVO TOWER	118.700	120.700	131.500	119.300
SHEREMETYEVO RADAR	118.100	122.700		
MOSCOW APPROACH	118.550	118.950	124.200	130.375
VNUKOVO RADAR	127.200	128.000	131.200	134.000
DOMODEDOVO RADAR	123.400	135.900		
	119.400	125.300	129.800	

CHANGE: New chart