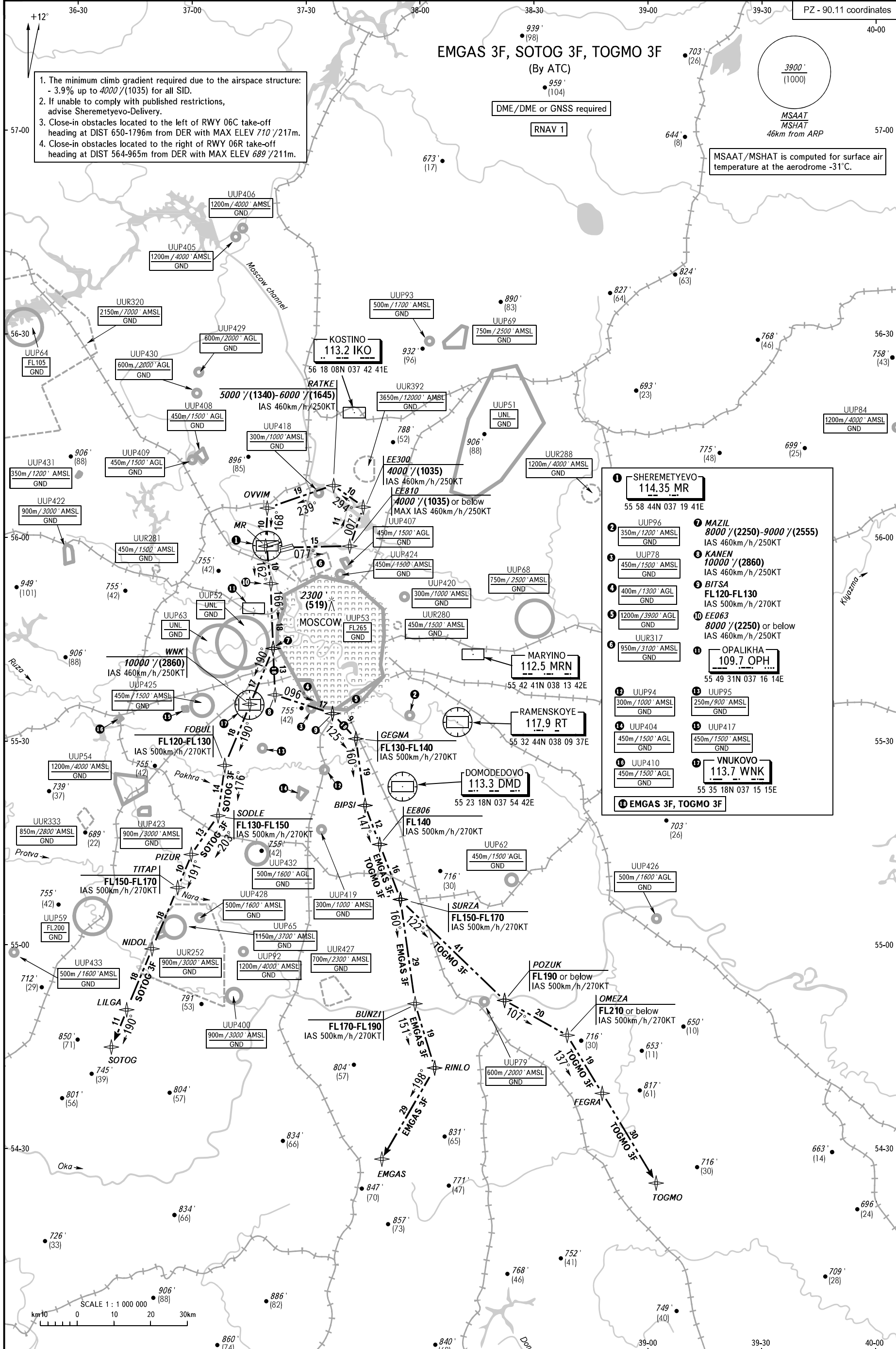


EMGAS 3F, SOTOG 3F, TOGMO 3F  
(By ATC)

DME/DME or GNSS required  
RNAV 1

MSAAT/MSHAT is computed for surface air temperature at the aerodrome -31°C.

1. The minimum climb gradient required due to the airspace structure: - 3.9% up to 4000'/(1035) for all SID.
2. If unable to comply with published restrictions, advise Sheremetyevo-Delivery.
3. Close-in obstacles located to the left of RWY 06C take-off heading at DIST 650-1796m from DER with MAX ELEV 710'/217m.
4. Close-in obstacles located to the right of RWY 06R take-off heading at DIST 564-965m from DER with MAX ELEV 689'/211m.



- |    |   |
|----|---|
| 1  | SHEREMETYEVO<br>114.35 MR<br>55 58 44N 037 19 41E       |
| 2  | UUP96<br>350m/1200' AMSL<br>GND                         |
| 3  | UUP78<br>450m/1500' AMSL<br>GND                         |
| 4  | 400m/1300' AGL<br>GND                                   |
| 5  | 1200m/3900' AGL<br>GND                                  |
| 6  | UUR317<br>950m/3100' AMSL<br>GND                        |
| 7  | MAZIL<br>8000'/(2250)-9000'/(2555)<br>IAS 460km/h/250KT |
| 8  | KANEN<br>10000'/(2860)<br>IAS 460km/h/250KT             |
| 9  | BITSA<br>FL 120-FL 130<br>IAS 500km/h/270KT             |
| 10 | EE063<br>8000'/(2250) or below<br>IAS 460km/h/250KT     |
| 11 | OPALIKHA<br>109.7 OPH<br>55 49 31N 037 16 14E           |
| 12 | UUP94<br>300m/1000' AMSL<br>GND                         |
| 13 | UUP95<br>250m/900' AMSL<br>GND                          |
| 14 | UUP404<br>450m/1500' AGL<br>GND                         |
| 15 | UUP417<br>450m/1500' AMSL<br>GND                        |
| 16 | UUP410<br>450m/1500' AGL<br>GND                         |
| 17 | VNUKOVO<br>113.7 WNK<br>55 35 18N 037 15 15E            |
| 18 | EMGAS 3F, TOGMO 3F                                      |

BEARINGS AND TRACKS ARE MAGNETIC  
ALTITUDES IN FEET  
HEIGHTS IN METRES  
ELEVATIONS IN FEET AND METRES  
DISTANCES IN KILOMETRES

Alt set: -QNH(QFE on req);  
-hPa(mm on req).

SHEREMETYEVO TOWER	118.700	120.700	131.500	119.300
SHEREMETYEVO RADAR	118.100	122.700		
MOSCOW APPROACH	118.550	118.950	124.200	130.375
VNUKOVO RADAR	127.200	128.000	131.200	134.000
DOMODEDOVO RADAR	123.400	135.900		
	119.400	125.300	129.800	