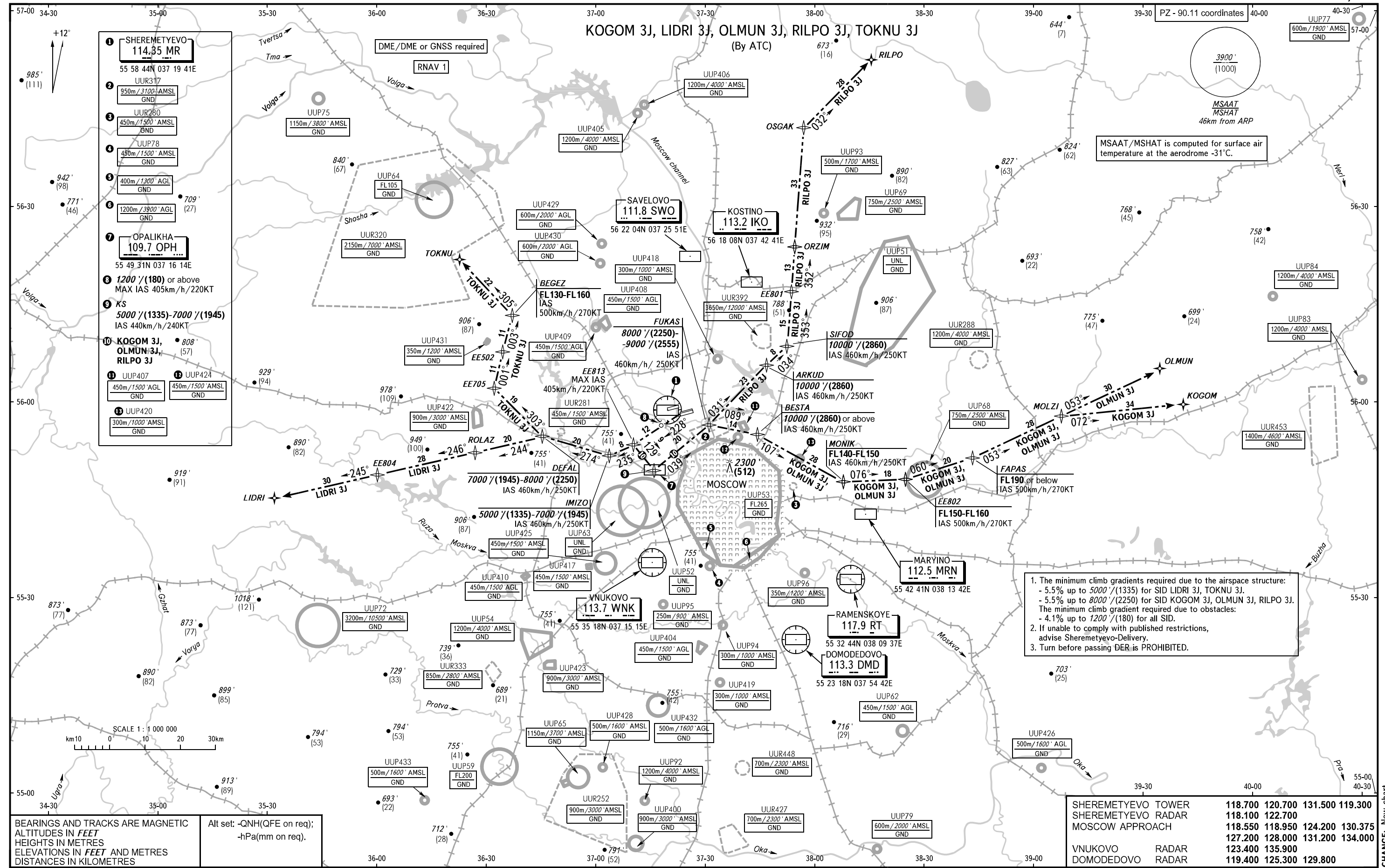


STANDARD DEPARTURE CHART  
INSTRUMENT (SID) - ICAO

TRANSITION ALT: **10000'**  
TRANSITION HGT: **(2860)**

MOSCOW, RUSSIA  
SHEREMETYEVO  
RNAV RWY 24C, 24L



- 1. SHEREMETYEVO  
114.35 MR  
55 58 44N 037 19 41E
- 2. UUR317  
950m/3100' AMSL  
GND
- 3. UUR280  
450m/1500' AMSL  
GND
- 4. UUP78  
450m/1500' AMSL  
GND
- 5. UUP64  
400m/1300' AGL  
GND
- 6. UUR320  
1200m/3900' AGL  
GND
- 7. OPALIKHA  
109.7 OPH  
55 49 31N 037 16 14E
- 8. 1200'/(180) or above  
MAX IAS 405km/h/220KT
- 9. KS  
5000'/(1335)-7000'/(1945)  
IAS 440km/h/240KT
- 10. KOGOM 3J,  
OLMUN 3J,  
RILPO 3J
- 11. UUP407  
450m/1500' AGL  
GND
- 12. UUP424  
450m/1500' AMSL  
GND
- 13. UUP420  
300m/1000' AMSL  
GND

1. The minimum climb gradients required due to the airspace structure:  
- 5.5% up to 5000'/(1335) for SID LIDRI 3J, TOKNU 3J.  
- 5.5% up to 8000'/(2250) for SID KOGOM 3J, OLMUN 3J, RILPO 3J.  
The minimum climb gradient required due to obstacles:  
- 4.1% up to 1200'/(180) for all SID.
2. If unable to comply with published restrictions, advise Sheremetyevo-Delivery.
3. Turn before passing DER is PROHIBITED.

SHEREMETYEVO TOWER	118.700	120.700	131.500	119.300
SHEREMETYEVO RADAR	118.100	122.700		
MOSCOW APPROACH	118.550	118.950	124.200	130.375
VNUKOVO RADAR	123.400	135.900		
DOMODEDOVO RADAR	119.400	125.300	129.800	

CHANGE: New chart