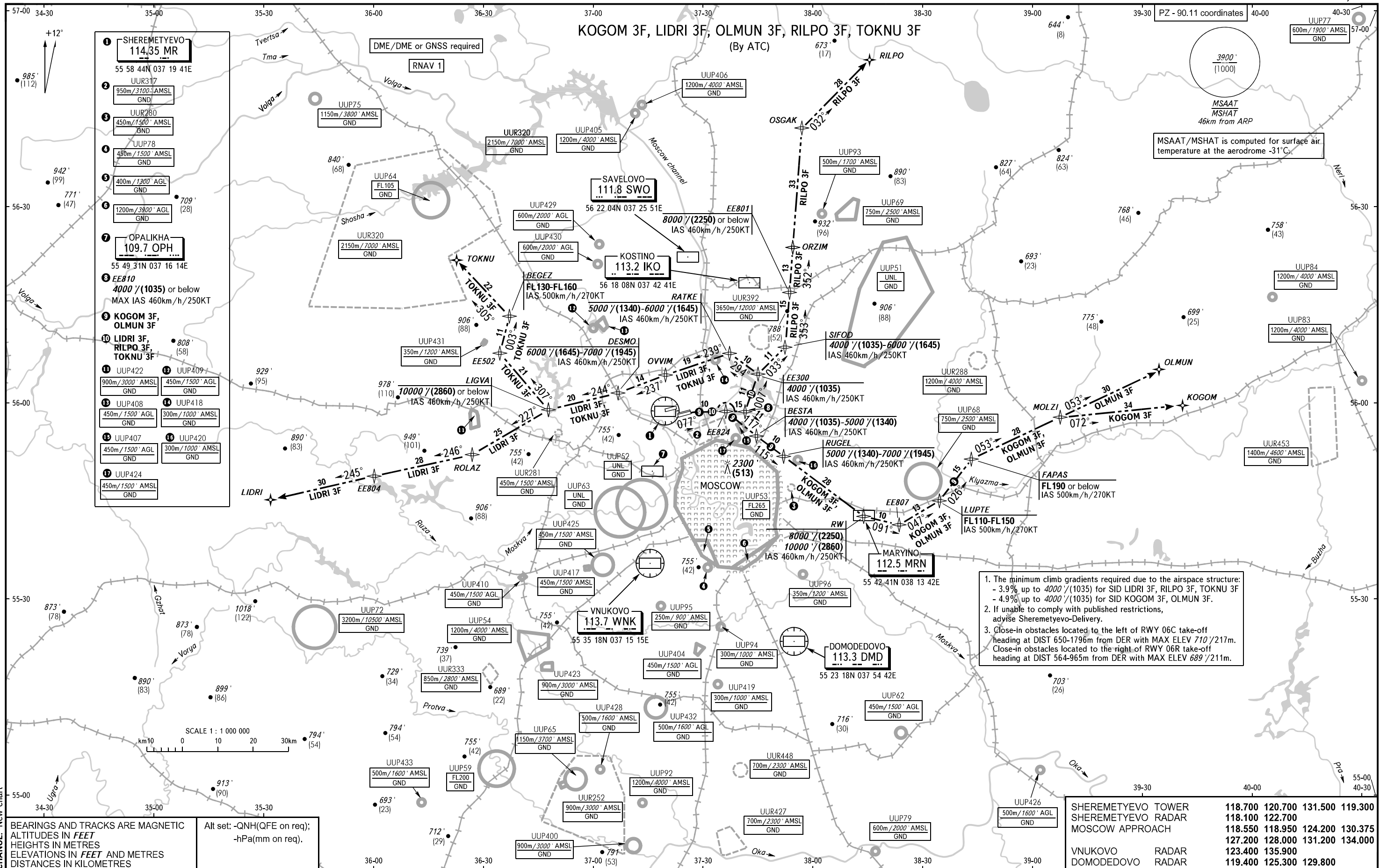


STANDARD DEPARTURE CHART
INSTRUMENT (SID) - ICAO

TRANSITION ALT: **10000'**
TRANSITION HGT: **(2860)**



- 1. SHEREMETYEVO
114.35 MR
55 58 44N 037 19 41E
- 2. UUR317
950m/3100' AMSL
GND
- 3. UUR280
450m/1500' AMSL
GND
- 4. UUP78
450m/1500' AMSL
GND
- 5. UUP64
400m/1300' AGL
GND
- 6. UUR320
1200m/3800' AGL
GND
- 7. OPALIKHA
109.7 OPH
55 49 31N 037 16 14E
- 8. EE810
4000'/(1035) or below
MAX IAS 460km/h/250KT
- 9. KOGOM 3F,
OLMUN 3F
- 10. LIDRI 3F,
RILPO 3F,
TOKNU 3F
- 11. UUP422
900m/3000' AMSL
GND
- 12. UUP409
450m/1500' AGL
GND
- 13. UUP408
450m/1500' AGL
GND
- 14. UUP418
300m/1000' AMSL
GND
- 15. UUP407
450m/1500' AGL
GND
- 16. UUP420
300m/1000' AMSL
GND
- 17. UUP424
450m/1500' AMSL
GND

1. The minimum climb gradients required due to the airspace structure:
- 3.9% up to 4000'/(1035) for SID LIDRI 3F, RILPO 3F, TOKNU 3F
- 4.9% up to 4000'/(1035) for SID KOGOM 3F, OLMUN 3F.
2. If unable to comply with published restrictions, advise Sheremetyevo-Delivery.
3. Close-in obstacles located to the left of RWY 06C take-off heading at DIST 650-1796m from DER with MAX ELEV 710'/217m.
Close-in obstacles located to the right of RWY 06R take-off heading at DIST 564-965m from DER with MAX ELEV 689'/211m.

BEARINGS AND TRACKS ARE MAGNETIC
ALTITUDES IN FEET
HEIGHTS IN METRES
ELEVATIONS IN FEET AND METRES
DISTANCES IN KILOMETRES

Alt set: -QNH(QFE on req);
-hPa(mm on req).

SHEREMETYEVO TOWER	118.700	120.700	131.500	119.300
SHEREMETYEVO RADAR	118.100	122.700		
MOSCOW APPROACH	118.550	118.950	124.200	130.375
	127.200	128.000	131.200	134.000
VNUKOVO RADAR	123.400	135.900		
DOMODEDOVO RADAR	119.400	125.300	129.800	