

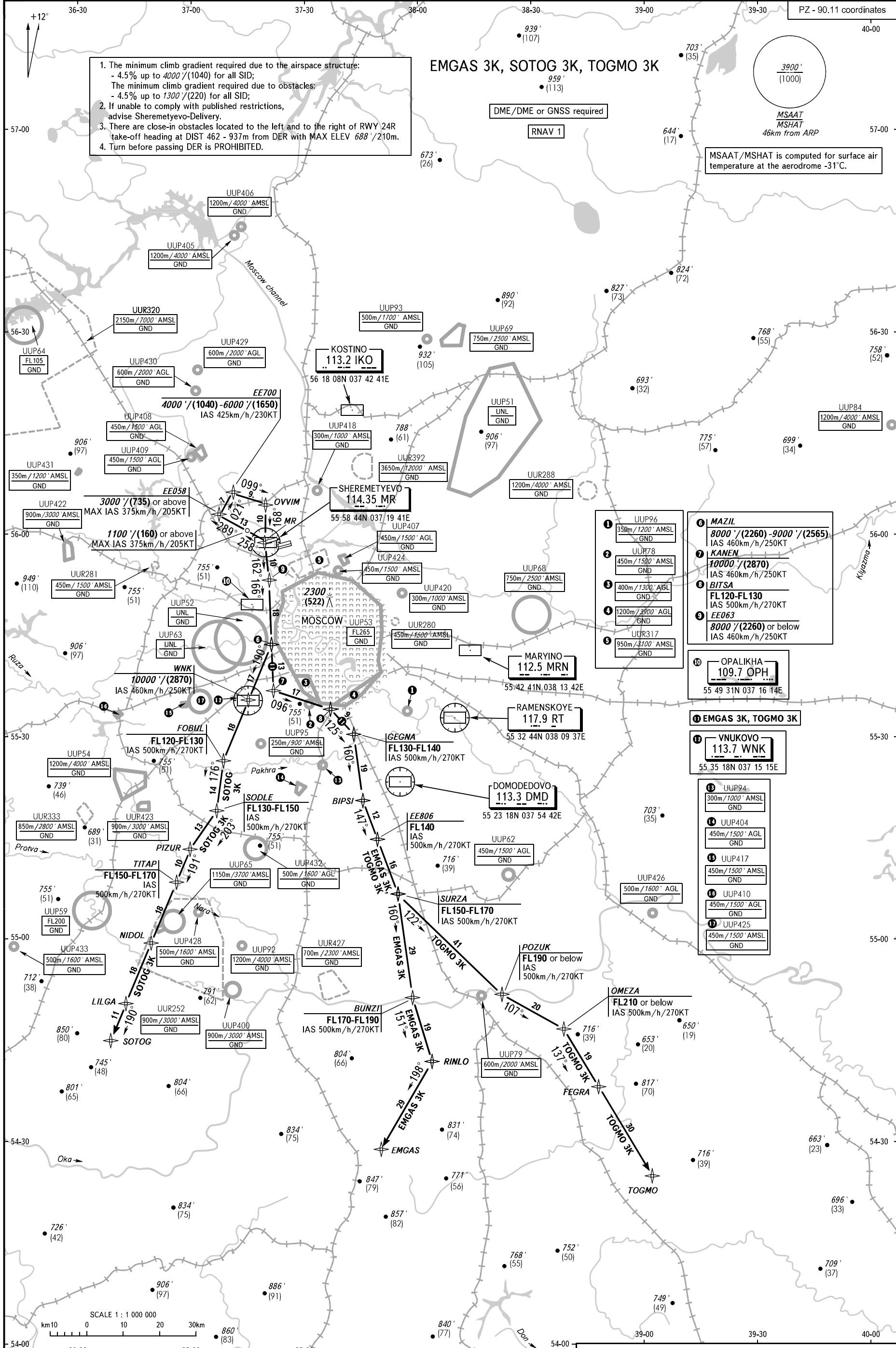
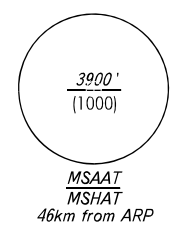
- The minimum climb gradient required due to the airspace structure:
 - 4.5% up to 4000'/(1040) for all SID;
 - The minimum climb gradient required due to obstacles:
 - 4.5% up to 1300'/(220) for all SID;
- If unable to comply with published restrictions, advise Sheremetyevo-Delivery.
- There are close-in obstacles located to the left and to the right of RWY 24R take-off heading at DIST 462 - 937m from DER with MAX ELEV 688' / 210m.
- Turn before passing DER is PROHIBITED.

EMGAS 3K, SOTOG 3K, TOGMO 3K

DME/DME or GNSS required

RNAV 1

MSAAT/MSHAT is computed for surface air temperature at the aerodrome -31°C.



- 1 UUP96
350m/1200' AMSL
GND
- 2 UUP78
450m/1500' AMSL
GND
- 3 UUP408
450m/1500' AGL
GND
- 4 UUP409
450m/1500' AGL
GND
- 5 UUP431
350m/1200' AMSL
GND
- 6 MAZIL
8000'/(2260) - 9000'/(2565)
IAS 460km/h/250KT
- 7 KANEN
10000'/(2870)
IAS 460km/h/250KT
- 8 BITSA
FL120-FL130
IAS 500km/h/270KT
- 9 EE063
8000'/(2260) or below
IAS 460km/h/250KT
- 10 OPALIKHA
109.7 OPH
55 49 31N 037 16 14E

- 11 EMGAS 3K, TOGMO 3K
- 12 VNUKOVO
113.7 WNK
55 35 18N 037 15 15E
- 13 UUP94
300m/1000' AMSL
GND
- 14 UUP404
450m/1500' AGL
GND
- 15 UUP417
450m/1500' AMSL
GND
- 16 UUP410
450m/1500' AGL
GND
- 17 UUP425
450m/1500' AMSL
GND

SHEREMETYEVO TOWER	118.700	120.700	131.500	119.300
SHEREMETYEVO RADAR	118.100	122.700		
MOSCOW APPROACH	118.550	118.950	124.200	130.375
VNUKOVO RADAR	127.200	128.000	131.200	134.000
DOMODEDOVO RADAR	123.400	135.900		
	119.400	125.300	129.800	

BEARINGS AND TRACKS ARE MAGNETIC
ALTITUDES IN FEET
HEIGHTS IN METRES
ELEVATIONS IN FEET AND METRES
DISTANCES IN KILOMETRES

Alt set: -QNH(QFE on req);
-hPa(mm on req).