

TRANSITION ALT: 10000'
TRANSITION HGT: (2870)

1. The minimum climb gradient required due to the airspace structure: - 6.0% up to 1100'/(155) for all SID;
2. If unable to comply with published restrictions, advise Sheremetyevo-Delivery.
3. There are close-in obstacles located to the left and to the right of RWY 06L take-off heading at DIST 379 - 1459m from DER with MAX ELEV 724'/221m.
4. Turn before passing DER is PROHIBITED.

EMGAS 3G, SOTOG 3G, TOGMO 3G

DME/DME or GNSS required
RNAV 1

MSAAT/MSHAT is computed for surface air temperature at the aerodrome -31°C.

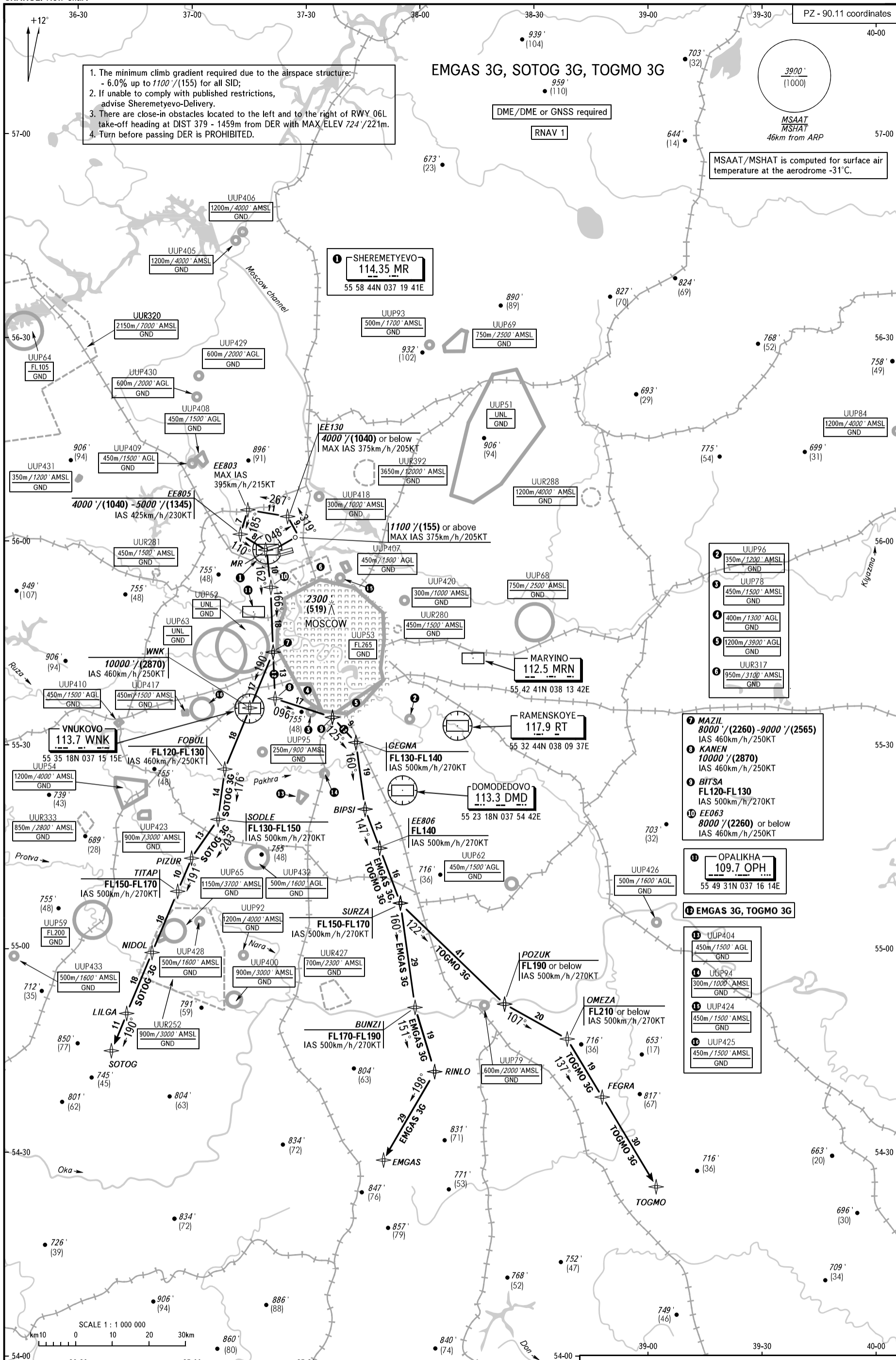
1 SHEREMETYEVO
114.35 MR
55 58 44N 037 19 41E

- 2 UUP96
350m/1200' AMSL
GND
- 3 UUP78
450m/1500' AMSL
GND
- 4 400m/1300' AGL
GND
- 5 1200m/3900' AGL
GND
- 6 UUR317
950m/3100' AMSL
GND

- 7 MAZIL
8000'/(2260) - 9000'/(2565)
IAS 460km/h/250KT
- 8 KANEN
10000'/(2870)
IAS 460km/h/250KT
- 9 BITSA
FL120-FL130
IAS 500km/h/270KT
- 10 EE063
8000'/(2260) or below
IAS 460km/h/250KT

11 OPALIKHA
109.7 OPH
55 49 31N 037 16 14E

- 12 EMGAS 3G, TOGMO 3G
- 13 UUP404
450m/1500' AGL
GND
- 14 UUP94
300m/1000' AMSL
GND
- 15 UUP424
450m/1500' AMSL
GND
- 16 UUP425
450m/1500' AMSL
GND



BEARINGS AND TRACKS ARE MAGNETIC
ALTITUDES IN FEET
HEIGHTS IN METRES
ELEVATIONS IN FEET AND METRES
DISTANCES IN KILOMETRES

Alt set: -QNH(QFE on req);
-hPa(mm on req).

SHEREMETYEVO TOWER	118.700	120.700	131.500	119.300
SHEREMETYEVO RADAR	118.100	122.700		
MOSCOW APPROACH	118.550	118.950	124.200	130.375
VNUKOVO RADAR	127.200	128.000	131.200	134.000
DOMODEDOVO RADAR	123.400	135.900		
	119.400	125.300	129.800	