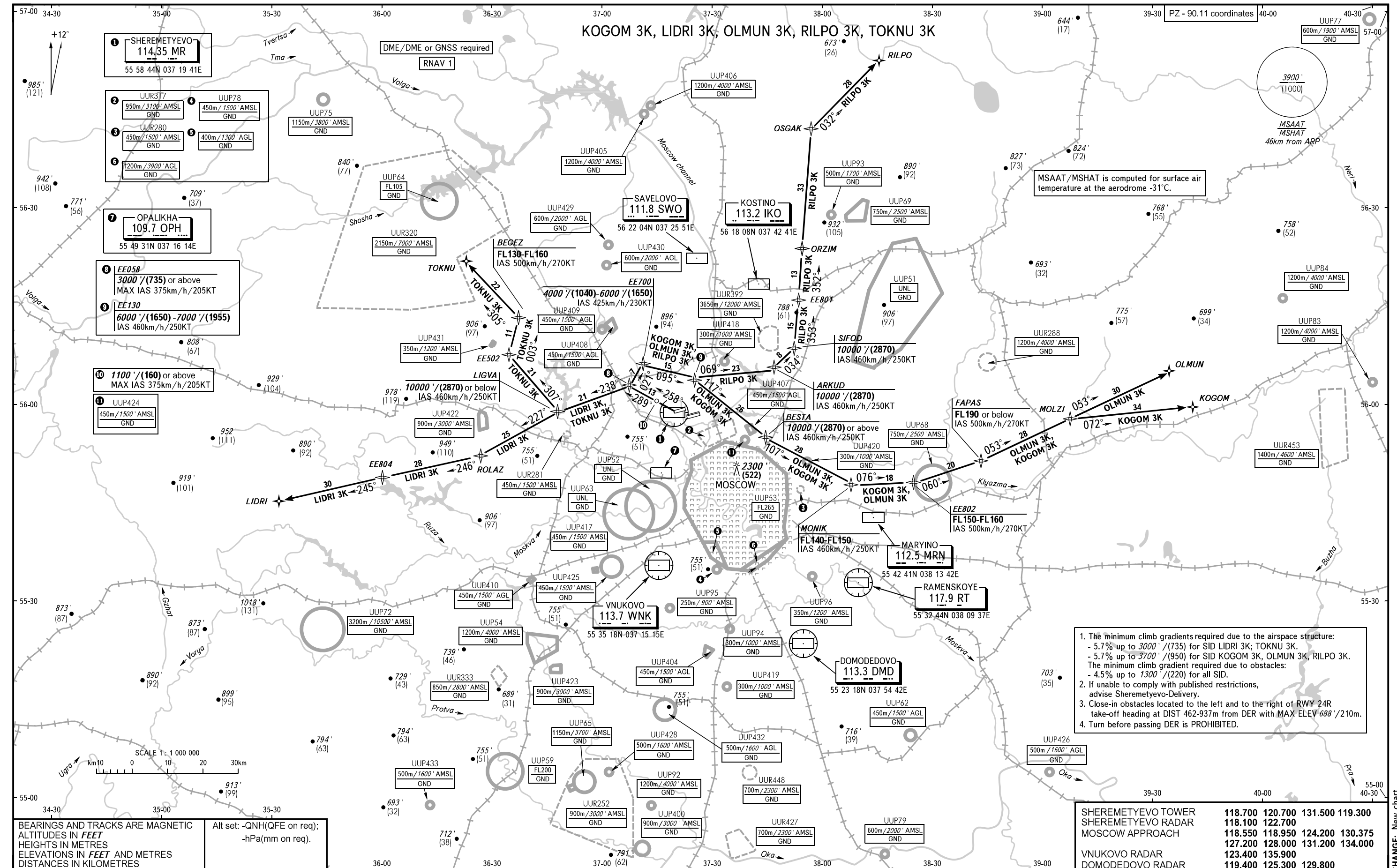


STANDARD DEPARTURE CHART
INSTRUMENT (SID) - ICAO

TRANSITION ALT: 10000'
TRANSITION HGT: (2870)

MOSCOW, RUSSIA
SHEREMETYEVO
RNAV RWY 24R



- The minimum climb gradients required due to the airspace structure:
 - 5.7% up to 3000'/(735) for SID LIDRI 3K; TOKNU 3K.
 - 5.7% up to 3700'/(950) for SID KOGOM 3K, OLMUN 3K, RILPO 3K.
 - The minimum climb gradient required due to obstacles:
 - 4.5% up to 1300'/(220) for all SID.
- If unable to comply with published restrictions, advise Sheremetyevo-Delivery.
- Close-in obstacles located to the left and to the right of RWY 24R take-off heading at DIST 462-937m from DER with MAX ELEV 688' /210m.
- Turn before passing DER is PROHIBITED.

SHEREMETYEVO TOWER	118.700	120.700	131.500	119.300
SHEREMETYEVO RADAR	118.100	122.700		
MOSCOW APPROACH	118.550	118.950	124.200	130.375
	127.200	128.000	131.200	134.000
VNUKOVO RADAR	123.400	135.900		
DOMODEDOVO RADAR	119.400	125.300	129.800	

CHANGE: New chart