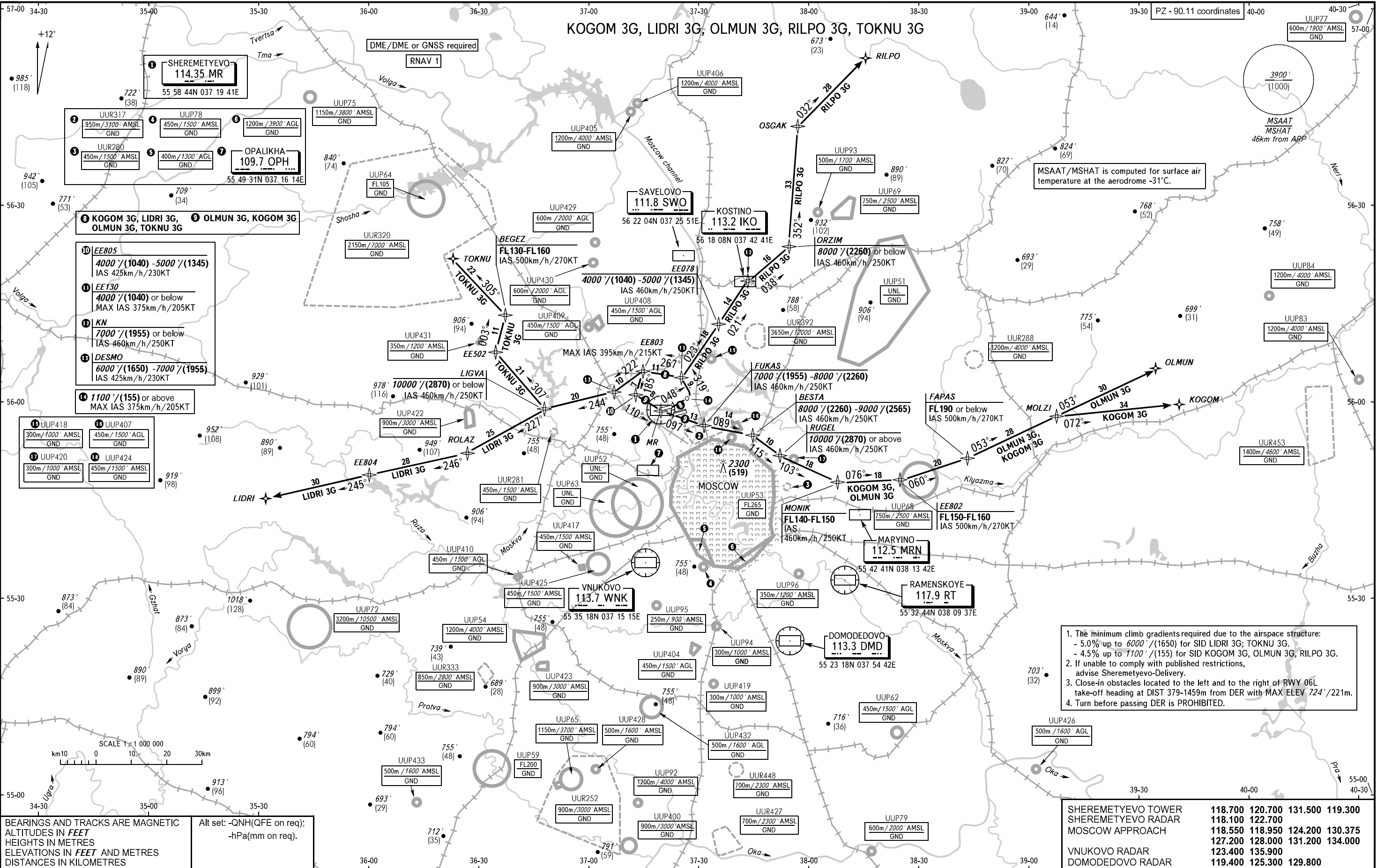


STANDARD DEPARTURE CHART
INSTRUMENT (SID) - ICAO

TRANSITION ALT: **10000'**
TRANSITION HGT: **(2870)**



- The minimum climb gradients required due to the airspace structure:
 - 5.0% up to 6000' (1650) for SID LIDRI 3G; TOKNU 3G.
 - 4.5% up to 1100' (155) for SID KOGOM 3G, OLMUN 3G, RILPO 3G.
- If unable to comply with published restrictions, advise Sheremetyevo-Delivery.
- Close-in obstacles located to the left and to the right of RWY 06L take-off heading at DIST 379-1459m from DER with MAX ELEV 724' / 221m.
- Turn before passing DER is PROHIBITED.

BEARINGS AND TRACKS ARE MAGNETIC
ALTITUDES IN FEET
HEIGHTS IN METRES
ELEVATIONS IN FEET AND METRES
DISTANCES IN KILOMETRES

Alt set: -QNH(QFE on req);
-hPa(mm on req).

SHEREMETYEVO TOWER	118.700	120.700	131.500	119.300
SHEREMETYEVO RADAR	118.100	122.700		
MOSCOW APPROACH	118.550	118.950	124.200	130.375
VNUKOVO RADAR	123.400	135.900		
DOMODEDOVO RADAR	119.400	125.300	129.800	