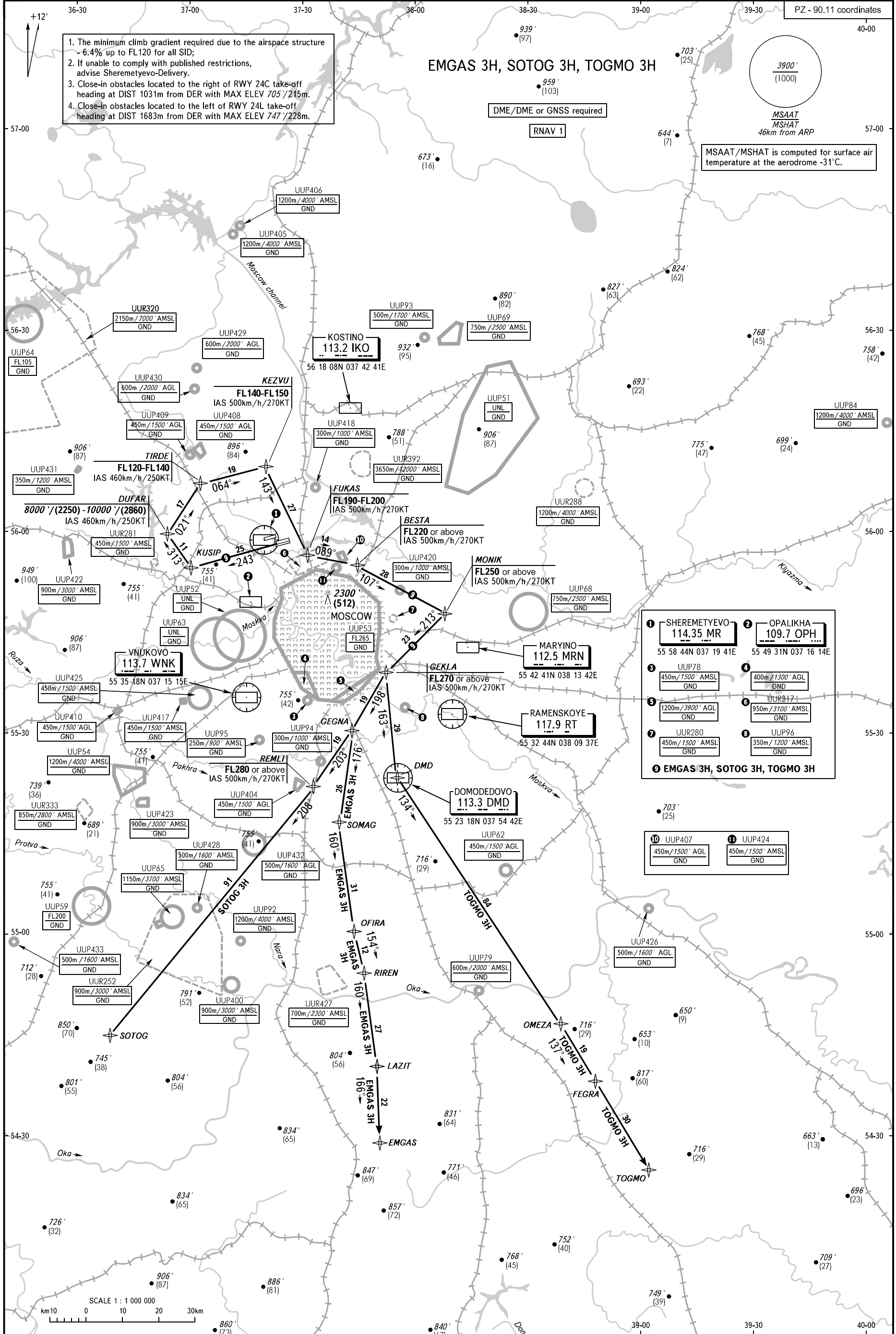


- The minimum climb gradient required due to the airspace structure - 6.4% up to FL120 for all SID;
- If unable to comply with published restrictions, advise Sheremetyevo-Delivery.
- Close-in obstacles located to the right of RWY 24C take-off heading at DIST 1031m from DER with MAX ELEV 705'/215m.
- Close-in obstacles located to the left of RWY 24L take-off heading at DIST 1683m from DER with MAX ELEV 747'/228m.

EMGAS 3H, SOTOG 3H, TOGMO 3H

DME/DME or GNSS required  
 RNAV 1

MSAAT/MSHAT is computed for surface air temperature at the aerodrome -31°C.



1 SHEREMETYEVO 114.35 MR 55 58 44N 037 19 41E	2 OPALIKHA 109.7 OPH 55 49 31N 037 16 14E
3 UUP78 450m/1500' AMSL GND	4 400m/1300' AGL GND
5 1200m/3900' AGL GND	6 UUR317 950m/3100' AMSL GND
7 UUR280 450m/1500' AMSL GND	8 UUP96 350m/1200' AMSL GND
9 EMGAS 3H, SOTOG 3H, TOGMO 3H	
10 UUP407 450m/1500' AGL GND	11 UUP424 450m/1500' AMSL GND

SHEREMETYEVO TOWER	118.700	120.700	131.500	119.300
SHEREMETYEVO RADAR	118.100	122.700		
MOSCOW APPROACH	127.200	128.000	131.200	134.000
VNUKOVO RADAR	123.400	135.900		
DOMODEDOVO RADAR	119.400	125.300	129.800	

BEARINGS AND TRACKS ARE MAGNETIC  
 ALTITUDES IN FEET  
 HEIGHTS IN METRES  
 ELEVATIONS IN FEET AND METRES  
 DISTANCES IN KILOMETRES

Alt set: -QNH(QFE on req);  
 -hPa(mm on req).

