

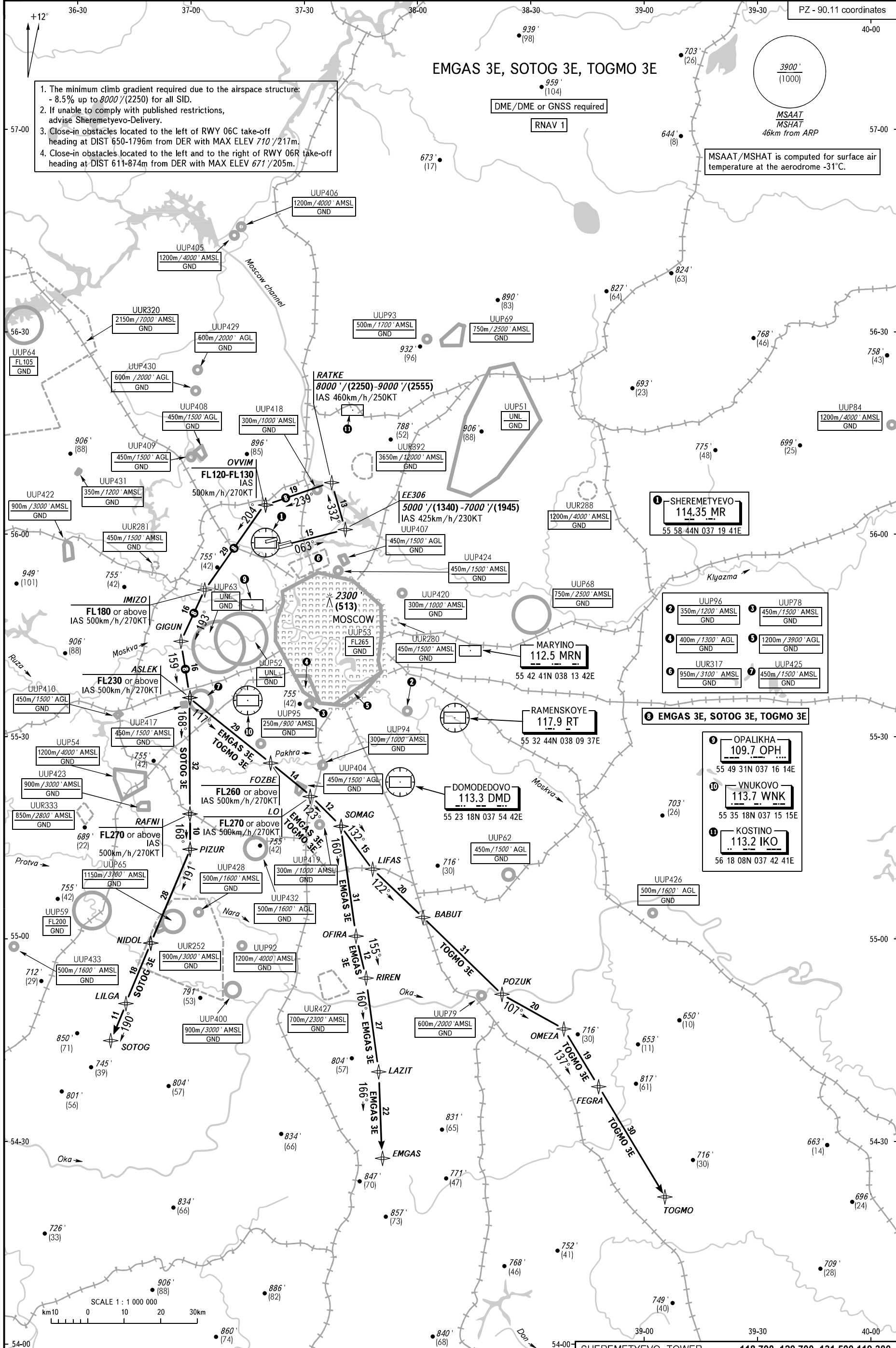
TRANSITION ALT: 10000'
TRANSITION HGT: (2860)

EMGAS 3E, SOTOG 3E, TOGMO 3E

- The minimum climb gradient required due to the airspace structure: - 8.5% up to 8000'/(2250) for all SID.
- If unable to comply with published restrictions, advise Sheremetyevo-Delivery.
- Close-in obstacles located to the left of RWY 06C take-off heading at DIST 650-1796m from DER with MAX ELEV 710'/217m.
- Close-in obstacles located to the left and to the right of RWY 06R take-off heading at DIST 611-874m from DER with MAX ELEV 671'/205m.

DME/DME or GNSS required
RNAV 1

MSAAT/MSHAT is computed for surface air temperature at the aerodrome -31°C.



1 SHEREMETYEVO
114.35 MR
55 58 44N 037 19 41E

2 UUP96 350m/1200' AMSL GND
3 UUP78 450m/1500' AMSL GND
4 UUR317 950m/3100' AMSL GND
5 UUP425 450m/1500' AMSL GND
6 UUP288 1200m/4000' AMSL GND
7 UUP424 450m/1500' AMSL GND

9 OPALIKHA
109.7 OPH
55 49 31N 037 16 14E
10 VNUKOVO
113.7 WNK
55 35 18N 037 15 15E
11 KOSTINO
113.2 IKO
56 18 08N 037 42 41E

SHEREMETYEVO TOWER	118.700	120.700	131.500	119.300
SHEREMETYEVO RADAR	118.100	122.700		
MOSCOW APPROACH	118.550	118.950	124.200	130.375
VNUKOVO RADAR	127.200	128.000	131.200	134.000
DOMODEDOVO RADAR	123.400	135.900		
	119.400	125.300	129.800	

BEARINGS AND TRACKS ARE MAGNETIC ALTITUDES IN FEET HEIGHTS IN METRES ELEVATIONS IN FEET AND METRES DISTANCES IN KILOMETRES

Alt set: -QNH(QFE on req);
-hPa(mm on req).